



Welcome !  
This session will start soon.

# IS Essentials

Information Session May 5<sup>th</sup>, 2022



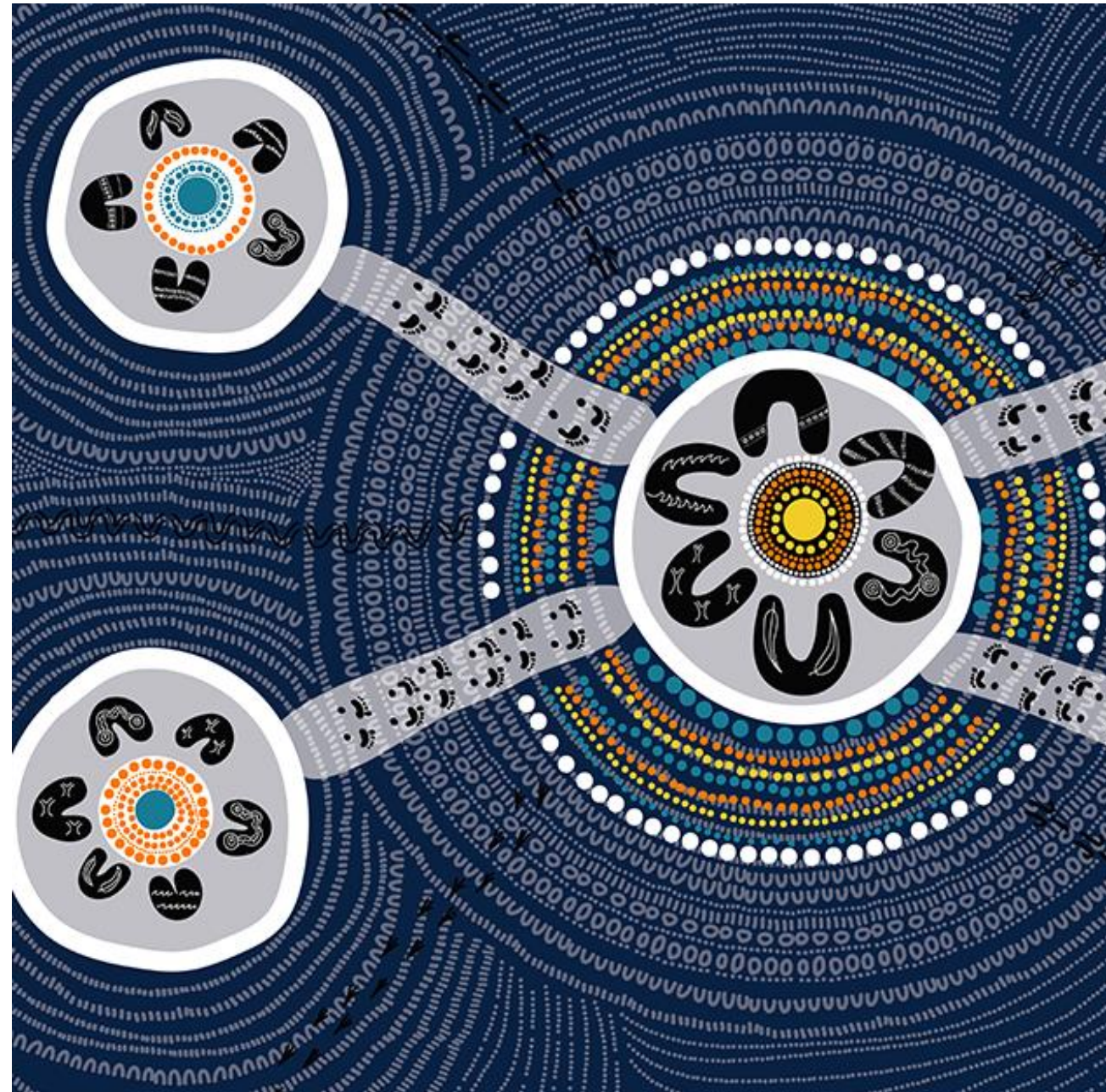


# Acknowledgement of Country

ISC would like to begin by acknowledging the Traditional Custodians of the lands on which we meet today.

We acknowledge their deep connection to land, water and culture, and pay our respects to their Elders past, present and emerging.

Tēnā koutou katoa to our attendees in NZ.



## IS Essentials Information Session

### 11:00 – 11:15am

- Welcome
- Introduction to ISC

### 11:15 – 11:40am

- IS Ratings & Benefits
- IS Essentials introduction
- Pilot Phase & How to join

### 11:40 – 12:00pm

- IS Essentials (based on IS v2.1)
- Q&A



**Patrick Hastings**  
Chief Delivery Officer



**Dr Kerry Griffiths**  
IS Technical Director



**Tyrel Momberg**  
Principal Technical  
Advisor



**Monique Isenheim**  
Head of Market  
Development



**Tom Young**  
Senior Project  
Manager

# About ISC



# ISC – leading for sustainable outcomes

The *Infrastructure Sustainability Council* (ISC) is a **member-based, not-for-profit** peak body operating in Australia and New Zealand with the purpose of enabling sustainability outcomes in infrastructure.

## Our strategic goals



### Leadership

We drive global best practice in infrastructure.



### Thriving Industry

We enable the industry to connect and collaborate.



### Market Transformation

We advocate for change that supports the industry to rapidly transition.



### Organisational Health

We are a purpose-led, inclusive and high performing organisation.



# ISC Membership

## Proponents



## Designers



## Contractors



## Suppliers/Partners



# ISC Products and Services



Thought Leadership  
Case Management  
Publications



Partnerships  
Influence  
Leadership



Events  
Conferences  
Awards



The IS  
Rating  
Scheme



Training  
Accreditation  
Development

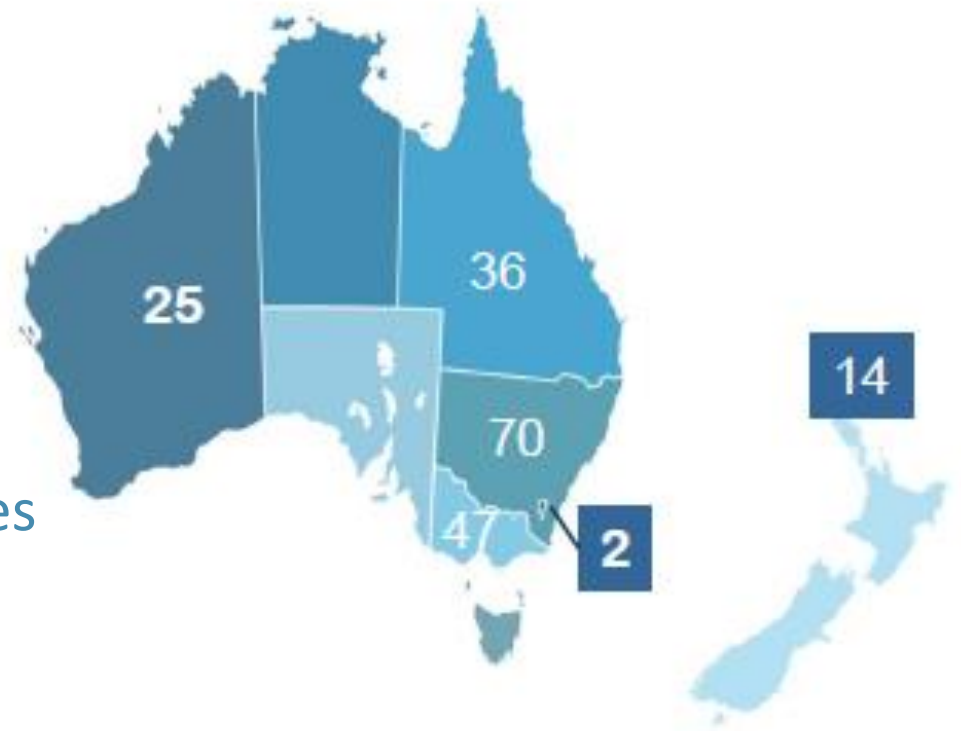


# What are IS ratings



# The IS Rating Scheme

- Deployed across ANZ....and beyond
- Influencing outcomes across all asset classes



>200

Projects

\$217

Billion Capital



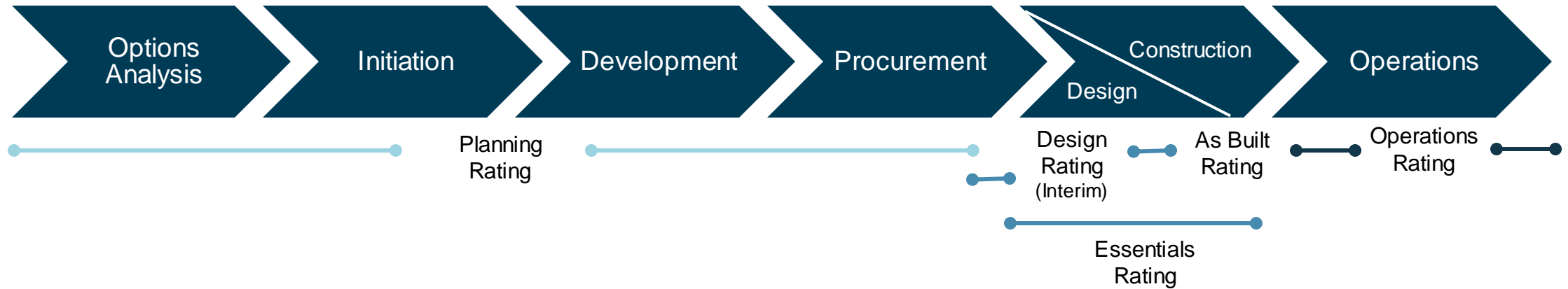
# IS Ratings mandated by several agencies

The most progressive government agencies, state-owned entities and private asset owners mandate IS based on capex thresholds.

Location	Agency	Mandating thresholds / requirements
NSW	Dept of Planning Industry Environment	ALL Critical state significant infrastructure
	Transport for NSW	ALL projects >\$50m, High risk projects <\$50m
	Sydney Metro	ALL project in program
	Queanbeyan Palerang Regional Council	ALL projects >\$2m
QLD	State Infrastructure Plan	ALL projects >\$100m
	Transport and Main Roads	ALL projects >\$100m
	Dept State Development, Infrastructure Local Government and Planning	Stage 3: Detailed Business Case
WA	Main Roads WA	ALL projects >\$100m
	Office of Major Transport Infrastructure Delivery	Metronet program
ACT	State policy	ALL project > 10m
SA	Dept of Infrastructure and Transport	ALL projects >\$100m
VIC	Major Roads Projects Victoria	ALL projects >\$100m
	Level Crossings Removal Authority	ALL projects in program
	Rail Projects Victoria	ALL projects in Melbourne Metro program
	City of Casey	Capital works projects
AU	Transurban	All capital works projects >\$100m
NZ	Waka Kotahi New Zealand Transport Agency	All capital works projects >\$15m
	City Rail Link Ltd	ALL projects in program

# How IS ratings work

## Whole of life consideration



## 4-Step Process





# Why IS ratings

# IS ratings for quadruple bottom line

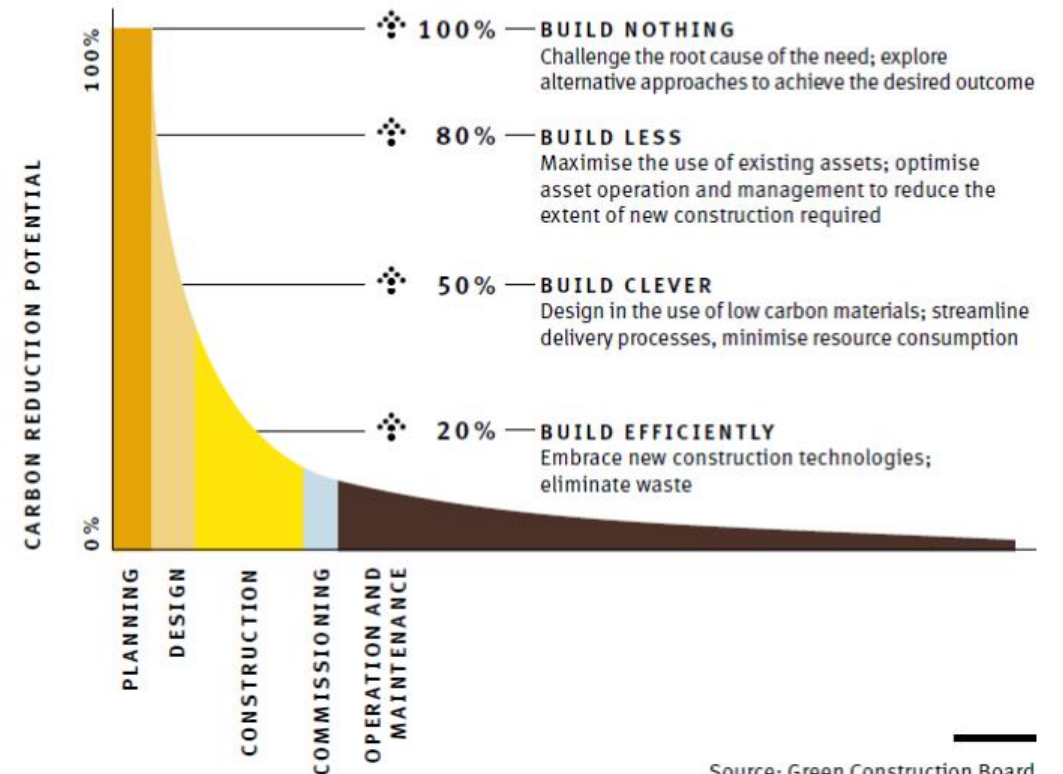
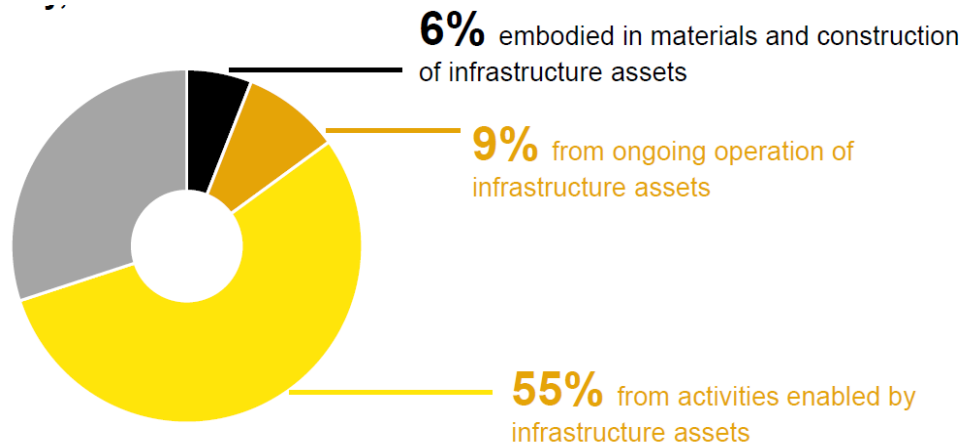
IS rating categories and credits are aligned with the Sustainable Development Goals to foster impact using a systems approach.

Governance	Environment	Social	Economic
Place	Energy & Carbon	Stakeholder engagement	Options Assessment & Business Case
Leadership & Management	Environmental Impacts	Legacy	Benefits Realisation
Sustainable Procurement	Resource Efficiency	Heritage	
Resilience	Water	Workforce Sustainability	
Innovation	Ecology		



# 70% of GHG emissions in AUS relate to infrastructure

A shared responsibility to make more intentional, strategic decisions



Source: Green Construction Board



# Performance Benchmarks

IS credits reward projects that verifiably perform beyond business as usual.

## Pla-2 Urban and Landscape Design

### Intent

To create infrastructure that has been influenced by the local context, fits its setting, and meets the needs of the people that will use it, while preserving and enhancing scenic, aesthetic, cultural, community and environmental resources and values.

### Criteria

Table G1 Pla-2 Design criteria summary

Level 1	Level 2
DL1.1 An urban and landscape design plan has been developed and design options implemented.	DL2.1 An urban and landscape design statement has been prepared.
AND	AND
DL1.2 The main arrangements for the project's urban and landscape design components have been reviewed.	DL2.2 The urban and landscape design plan and statement have been independently reviewed at key stages throughout the design.

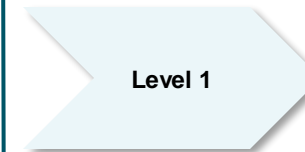
EXAMPLE

## Compliance

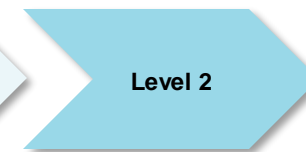


Business  
as Usual

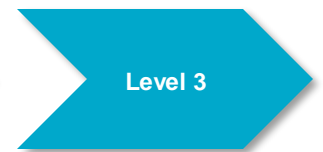
## Beyond Compliance



Measurement



No recurring / net  
impact



Restoration &  
Enhancement

# IMPACT

Our 2021 Impact Report highlights the value creation of IS ratings.



Lifecycle materials  
GHG emissions  
reduction  
**56%**

Lifecycle energy  
GHG emissions  
reduction  
**43%**

Lifecycle energy  
use reduction  
**47%**

Lifecycle water  
use reduction  
**50%**

Materials with  
sustainability  
credentials  
**1.5M  
tonnes**

95% of waste  
diverted from landfill  
=  
**14.5M  
tonnes**

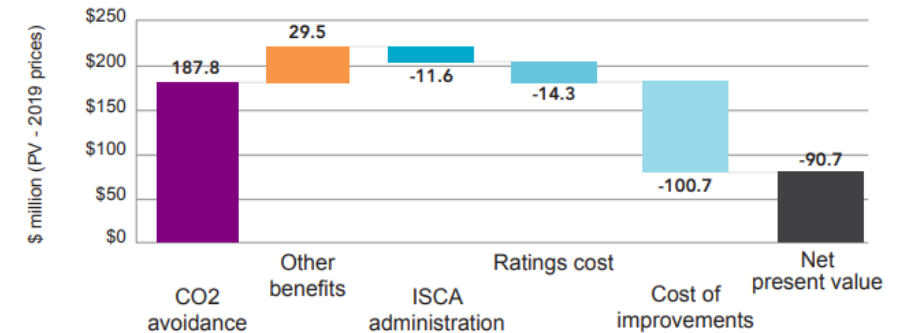
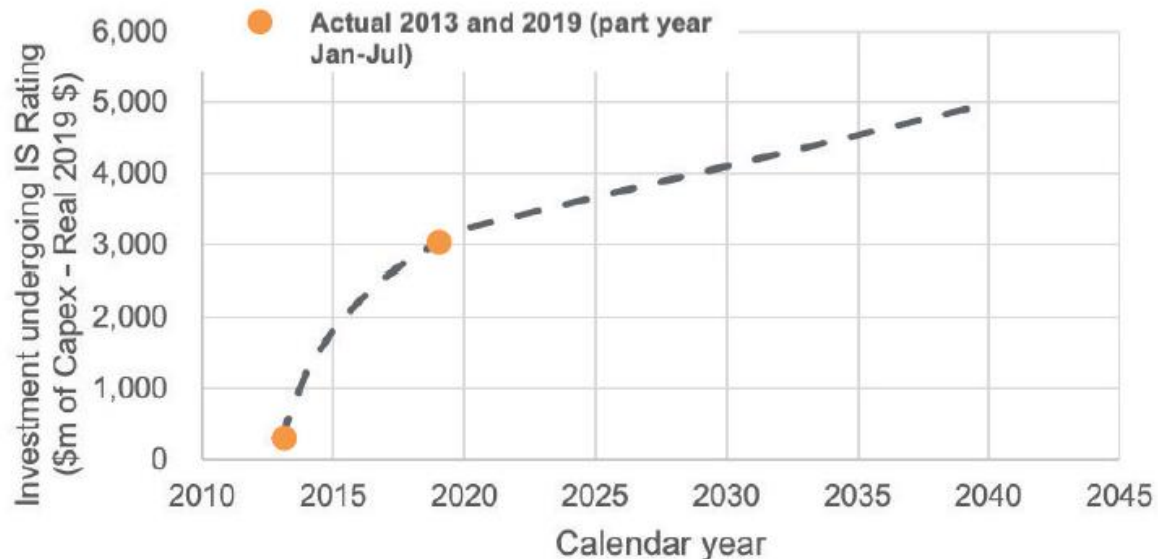
97% of spoil  
re-used  
=  
**14M  
tonnes**

27 innovations from  
certified projects,  
including  
**1 WORLD  
FIRST**

1<sup>st</sup> IS Planning  
Rating Certification  
12 IS Design  
Certifications  
10 IS As Built  
Certifications  
2 IS Operations  
Certifications

# ROI of the IS Rating Scheme

- return of at least \$1.6 for every dollar spent
- not including a range of wider benefits



**A Doubling of Uptake predicted to deliver NPV of \$90.7M.**

## EXAMPLES OF BENEFITS NOT QUANTIFIED



Benefits of Open space



Health Outcomes

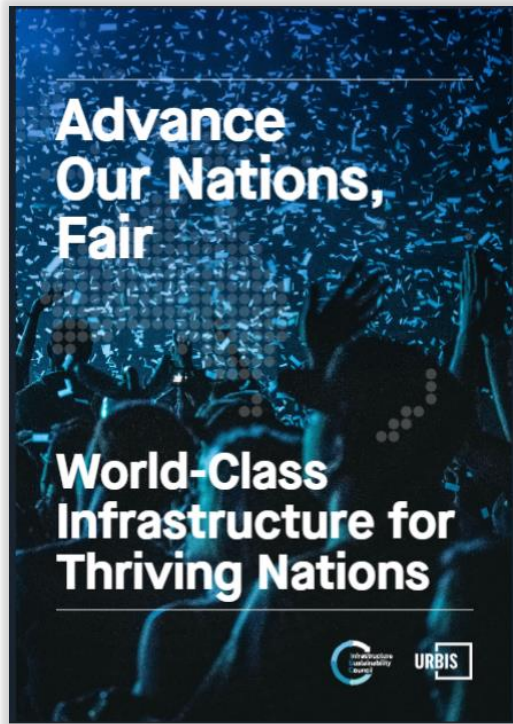


Human Capital Development



# Achieving 'BIG' sustainability targets

Two reports on how IS ratings can help achieve national and local sustainability strategies



The role of infrastructure in resilience building and driving positive impact.



Local strategies to achieving net-zero.

# In summary

## Benefits of a Rating Scheme:

- Drive sustainability outcomes
- Systematic, recognised approach
- Whole of life efficiencies
- Benchmark performance
- Manage reputational risk and recognition

## Measured by:

- Financial Return on Investment (RoI)
- Direct and indirect impacts



# IS Essentials

- Sustainability Rating Tool Offering (design and construction) specifically for **Projects  $\leq$  \$100m**
- Suitable for wide range of infrastructure types, focus on **local government projects**
- Built from IS v2.1 Design & As-Built Technical Manual but with **reduced complexity** and **scale**
- IS Essentials will be ISC's **first digital rating**
- **Currently accepting Pilot Projects**

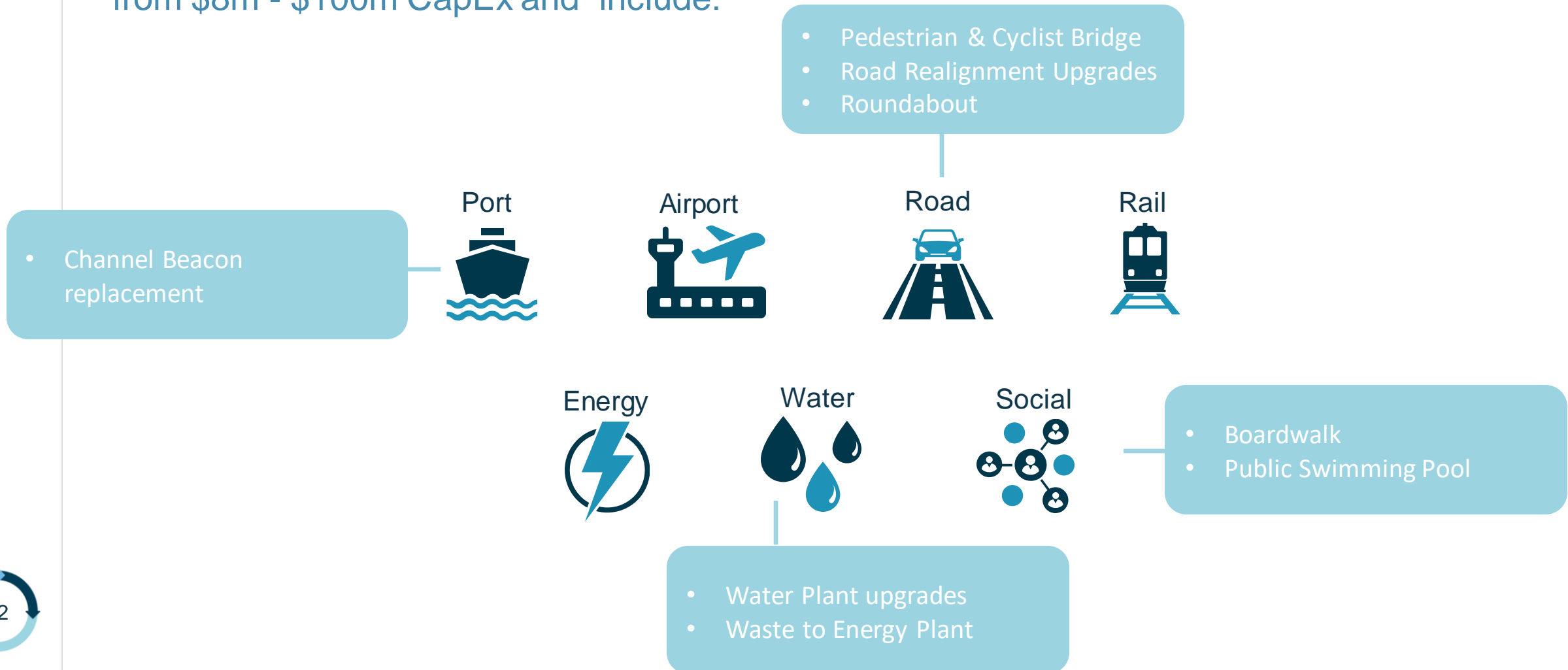




# IS Essentials Pilot Process

# 16 Pilot Projects confirmed

IS Essentials is suitable for a wide range of assets types. Confirmed Pilot Projects range from \$8m - \$100m CapEx and include:



# Pilot Process

Pilot projects are supported throughout the process and will be able to provide vital feedback for the final development of the tool.



Continuous feedback process  
shapes the final IS Essentials tool



# IS Essentials Pilot Participation

For projects ≤ \$100m

Pilot projects participation includes:

- ✓ Pilot project certification
- ✓ Pilot project Training
- ✓ Dedicated Project Manager & ISC support
- ✓ Joint communication / promotion / case study
- ✓ Reduced fee ISC membership (where applicable)

## Requirements

- ✓ Participation Fee: \$30,000\*
- ✓ Internal resourcing of assessment & submission (assessor or consultant)



# IS Essentials overview (based on IS v2.1 D&AB)



# IS Essentials (based on IS v2.1 D&AB)

IS Essentials is designed to reduce scale and complexity of IS ratings for projects <\$100m.

1. Fewer credits (38 to 34)
2. Reduced/ deleted & modified credit criteria
3. Materiality Assessment
4. Base Case
5. CapEx Bands
6. Organisational/ Program approach
7. Templates/ Examples
8. New Verification model
9. Digitalisation
10. Training

# Item 2. Credit Criteria – A. Deletions & B. Modifications

## Criteria

Table G6      Lea-1 Design criteria summary

Level 1	Level 2	Level 3
<p><u>Lea-1</u> DL1.1 Sustainability objectives, targets, responsibilities and a reporting framework have been developed (or reviewed and updated).</p> <p>AND</p> <p><u>Lea-1</u> DL1.2 A sustainability management plan has been developed <del>for design and construction.</del></p>	<p>The requirements for Level 1 have been achieved.</p> <p>AND</p> <p><u>Lea-1</u> DL2.1 Sustainability objectives and targets have been reviewed with key external stakeholders and include their input.</p> <p>AND</p> <p><u>Lea-1</u> DL2.2 Sustainability targets are publicly stated <del>and performance against these targets is publicly reported.</del></p>	<p>The requirements for Level 2 have been achieved.</p> <p>AND</p> <p><u>Lea-1</u> DL3.1 <u>Performance against sustainability targets is publicly reported.</u> <del>Public reporting of sustainability performance includes contribution to the UN SDGs.</del></p> <p>AND</p> <p><del>DL3.2 Sustainability performance reporting has been independently reviewed by a suitably qualified professional.</del></p>



# Item 3. IS Essentials Materiality Assessment

Standard materiality assessment process → CREDITS SELECTION

Capex Bracket	Minimum number of credits to be 'SCREENED' in
<\$20m	20
\$20m - <\$50m	25
\$50m - \$100m	30

- ISC will generate the scorecard → Projects encouraged to provide feedback
- Points redistributed
- No compulsory credits

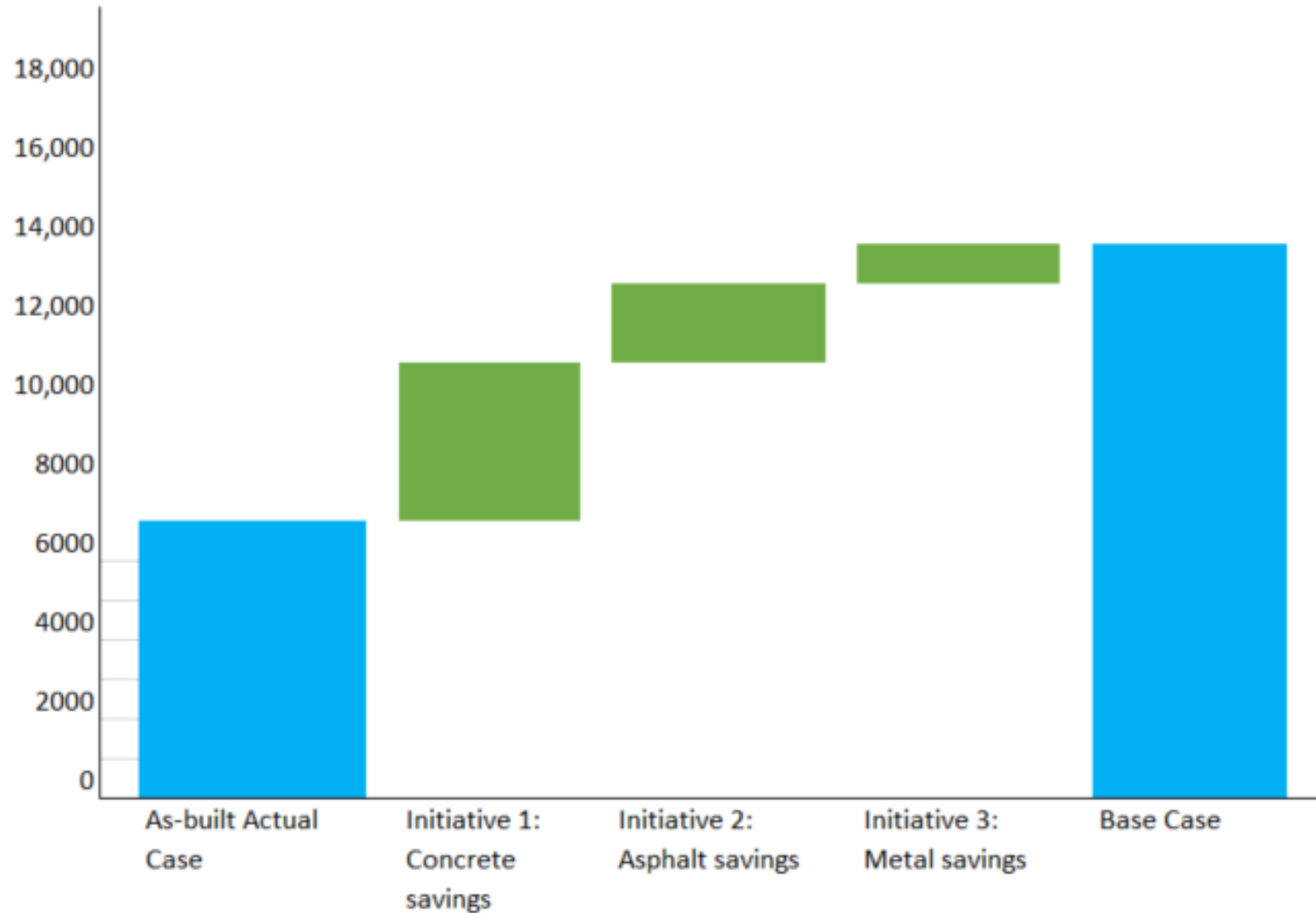
# Item 4. IS Essentials Base Case Approach

- Different approach to the typical ISC Base Case process

Phase	Existing methodology		New methodology	
	<i>Base Case</i>	<i>Actual Case</i>	<i>Base Case</i>	<i>Actual Case</i>
<i>Design</i>	Modelled construction footprint based on early BOQ + Modelled operations footprint	Modelled construction footprint based on DD BOQ + Modelled operations footprint	Reverse calculation from <u>Design</u> Actual Case + Modelled operations footprint	Modelled construction footprint based on DD BOQ + Modelled operations footprint
<i>As Built</i>		Monitored construction footprint + Modelled operations footprint	Reverse calculation from <u>As Built</u> Actual Case + Modelled operations footprint	Monitored construction footprint + Modelled operations footprint

# IS Essentials Base Case Approach

## Example





# Item 6. Organisational / Program Approach

## Program of Works / Organisation Approach

Projects undertaking an Essentials Rating may be part of a larger Program of Works (e.g. a scope of works that has been split into smaller individual projects, each targeting their own IS Rating) or the project Proponent could be a large Organisation which is undertaking many separate ratings (e.g. a transport authority in Australia or New Zealand). The ISC recognises that for efficiency in these situations work undertaken as part of a 'Program of Works' or at the 'Organisation level' may be used to meet credit criteria (or part thereof) within the IS Essentials project submission.

# Draft IS Essentials Technical Manual

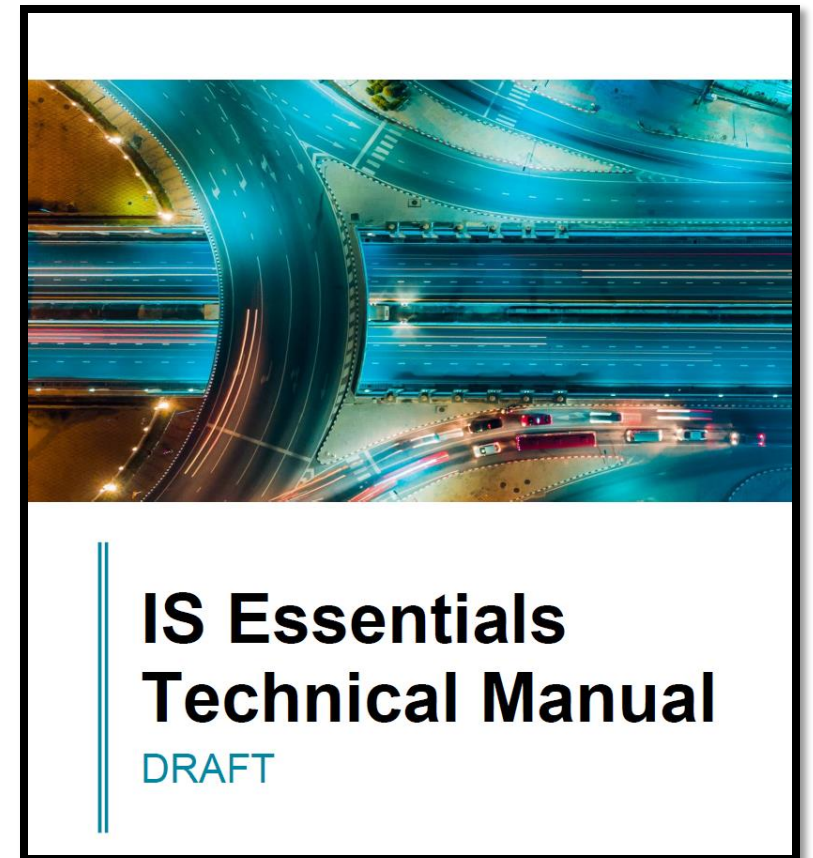
The Draft IS Essentials Technical Manual is shared with initial pilot projects.

Note that...

- ISC may iterate the Draft Technical Manual
- Iterations will capture changes made in response to the latest **feedback** from Pilot Projects & Working Groups

Piloting Projects will be, at a minimum, expected to undertake a rating utilizing the IS Essentials Resources available to them at the time of kick-off:

→ **Draft no. 3**



# To discuss joining, please reach out!

To any of the panel members or to [monique.isenheim@iscouncil.org](mailto:monique.isenheim@iscouncil.org)



Q & A





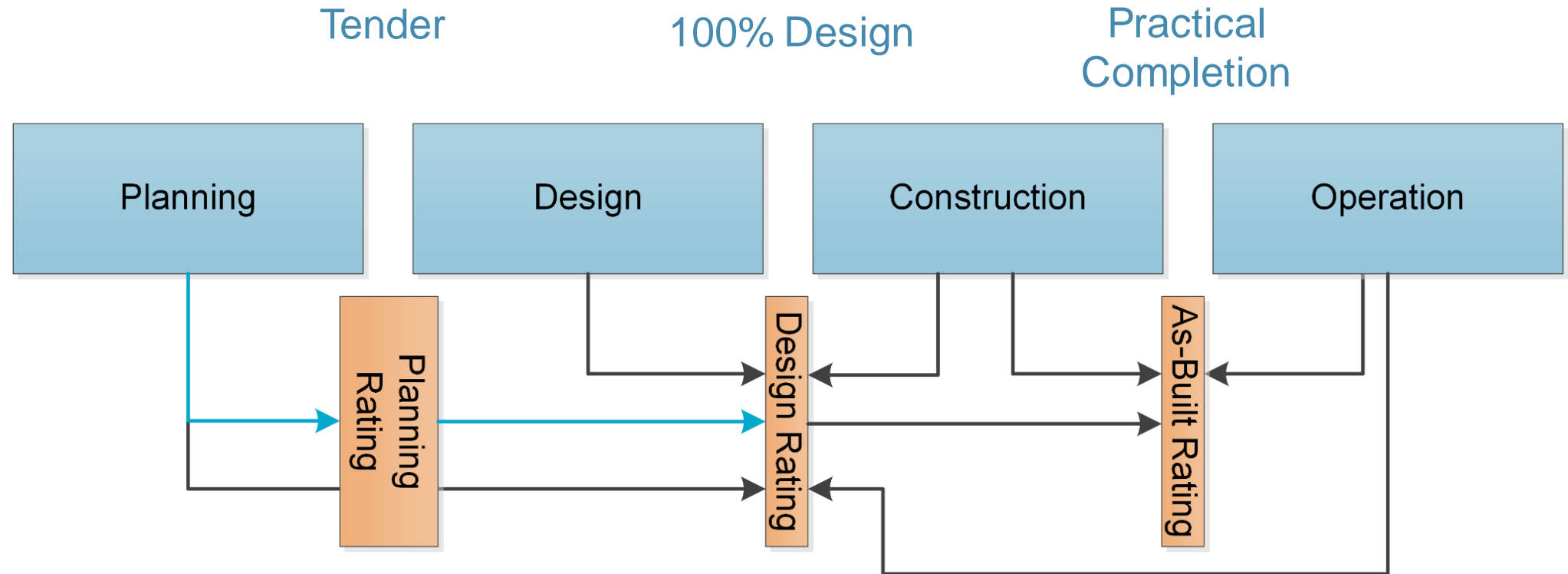
# THANK YOU!

Contact: [Monique.Isenheim@iscouncil.org](mailto:Monique.Isenheim@iscouncil.org)



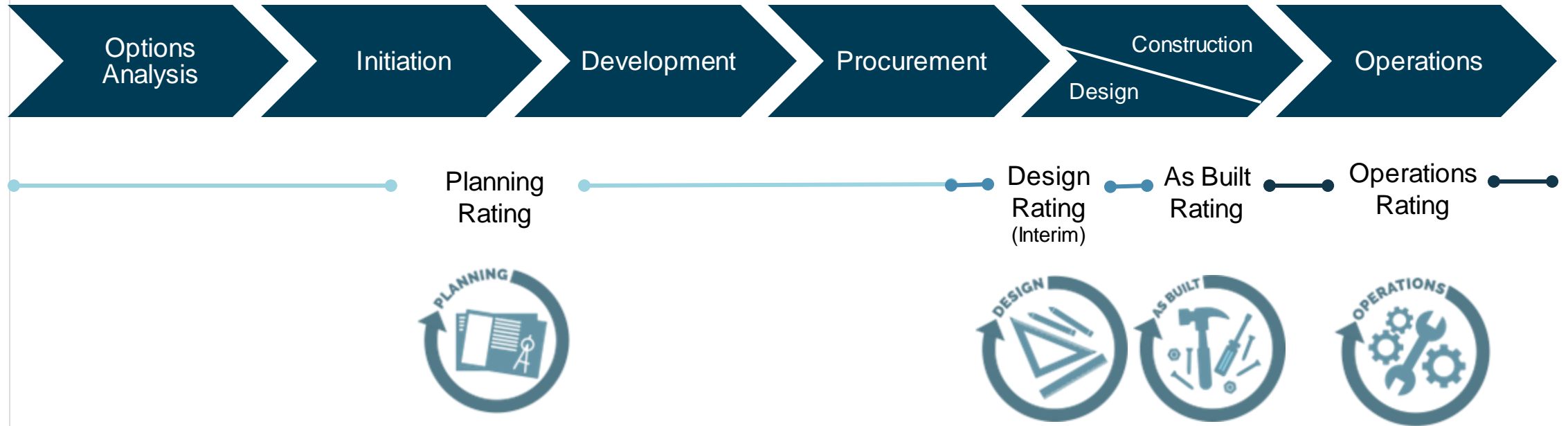
# Back Up / Alternative Slides

# Where do the rating phases fit into delivery?

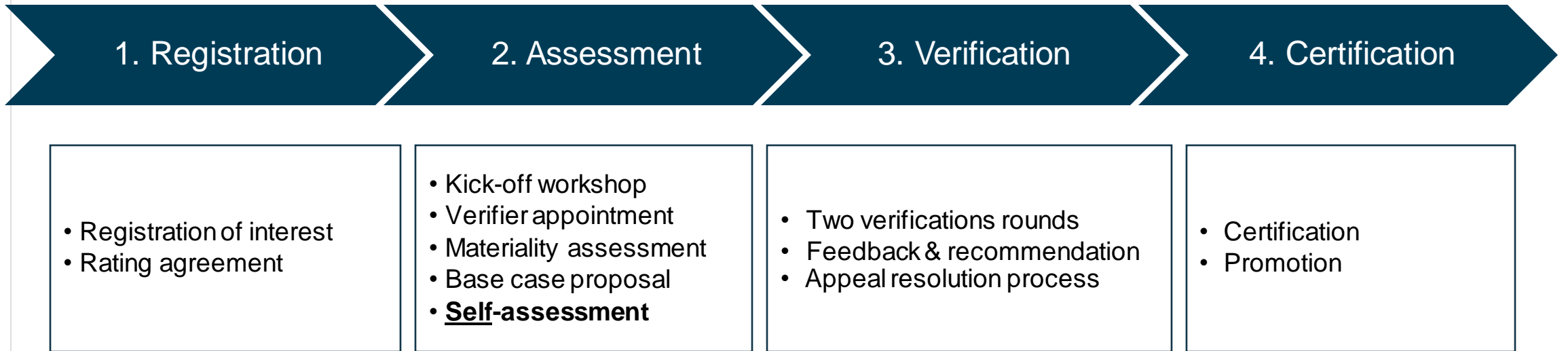


# The IS Rating Scheme

- Assess the **sustainability performance** of infrastructure
- Whole of life consideration



# Rating Process





# Award Levels & Scores (v2.1)

95-100	 <b>Design</b> DIAMOND	 <b>As Built</b> DIAMOND
80-94.9	 <b>Design</b> PLATINUM	 <b>As Built</b> PLATINUM
60-79.9	 <b>Design</b> GOLD	 <b>As Built</b> GOLD
40-59.9	 <b>Design</b> SILVER	 <b>As Built</b> SILVER
20-39.9	 <b>Design</b> BRONZE	 <b>As Built</b> BRONZE

# IS Rating Scheme



## Whole of life consideration



## 4-Step Process



# About the ISC

Wait to receive updated slide from Hayley

The *Infrastructure Sustainability Council* (ISC) is a **member-based, not-for-profit** peak body operating in Australia and New Zealand with the purpose of enabling sustainability outcomes in infrastructure.



Events  
Conferences  
Awards



Thought Leadership  
Case Management  
Publications



The IS  
Rating  
Scheme



Partnerships  
Influence  
Leadership



Training  
Accreditation  
Development

# The IS Rating Process



- Registration of interest
- Rating agreement

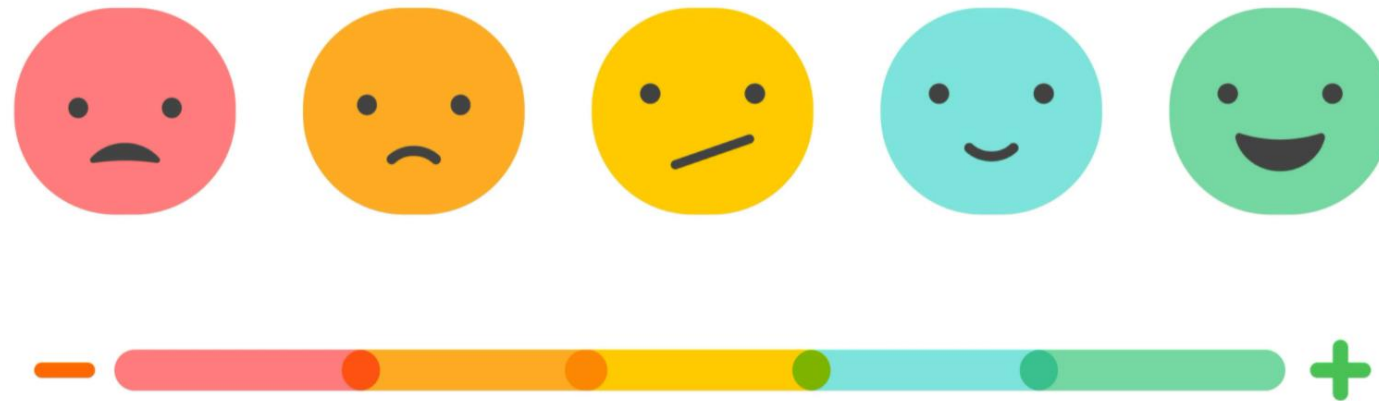
- Kick-off workshop
- Verifier appointment
- Materiality assessment
- Base case proposal
- **Self-assessment**

- Two verifications rounds
- Feedback & recommendation
- Appeal resolution process

- Certification
- Promotion

# Feedback and Issue Resolution

- **Feedback is vital**
- ISC's Continuous Improvement process
  - ❑ *Similar to* Technical Clarifications (TC) & Credit Interpretation Requests (CIR)







# IS Essentials

Information Session May 5<sup>th</sup>, 2022





# Objectives

The webinar is a teaser to raise awareness for the IS Essentials scheme and pilot with the goal to generate immediate leads and long-term interest

## AWARENESS for

- the value of IS ratings and how they achieve impact (for participants unfamiliar with ISC)
- new IS Essential scheme and what projects it suits
- Major differences between IS Essentials and V2.1 (high level)
- Pilot program

## LEADS GENERATION

- Recruiting additional pilot projects – directly or via third party channel (e.g. consultants, contractors, tenderers suggesting participation)

## CALL TO ACTION

- Get in touch to find out more / discuss suitable projects

# Audience

## Confirmed so far:

- Outreach: Social Media, ISC newsletter, targeted emails
- Confirmed 270+ registrations (as of 29 April)
- Thereof majority ISC member organisations, mostly consultants (incl. 2 or more from each organisation)
- A number of prospects/ proponents for pilot projects, e.g. Unitywater, SEQ Water, TMR, NT gov, TfNSW
- Some local government organisations/councils
  - Brisbane City council QLD
  - Auckland Council NZ
  - City of Rockingham WA
  - Mornington Peninsula Council VIC
  - City of Onkaparinga SA
- Continue targeted outreach to increase local gov sign ups

# Suggested agenda

Not a technical deep dive but a general overview. More detailed information at the end to keep less familiar audience engaged, allow them to tune out.

- Welcome and acknowledgement of country
- Panel intro
- Short intro to ISC
- IS ratings, impact and refer to Advocacy reports (high light local gov relevance!)
- IS Essentials and what projects it is for
- IS Essentials pilot is happening and open, what project types we have on board already
- How to get involved and what it entails
- Overview of differences between 2.1 and IS E (e.g. bands, number of credits)
- Overview of planned efficiency measures, eg Templates and resources, **digitisation**
- Call to action: Invitation to reach out to find out more or discuss specific projects
- Q&A

Monique

Monique

Pat

Pat

Kerry

Kerry

Tom

Tom

Ty

Ty

Monique

All

Pat

All

Ty

Tom

Kerry

Monique

# Panel



**Patrick Hastings**  
Chief Operating  
Officer



**Dr Kerry Griffiths**  
IS Technical Director



**Tyrel Momberg**  
Principal Technical  
Advisor



**Tom Young**  
Senior Project  
Manager



**Monique Isenheim**  
Head of Market  
Development