

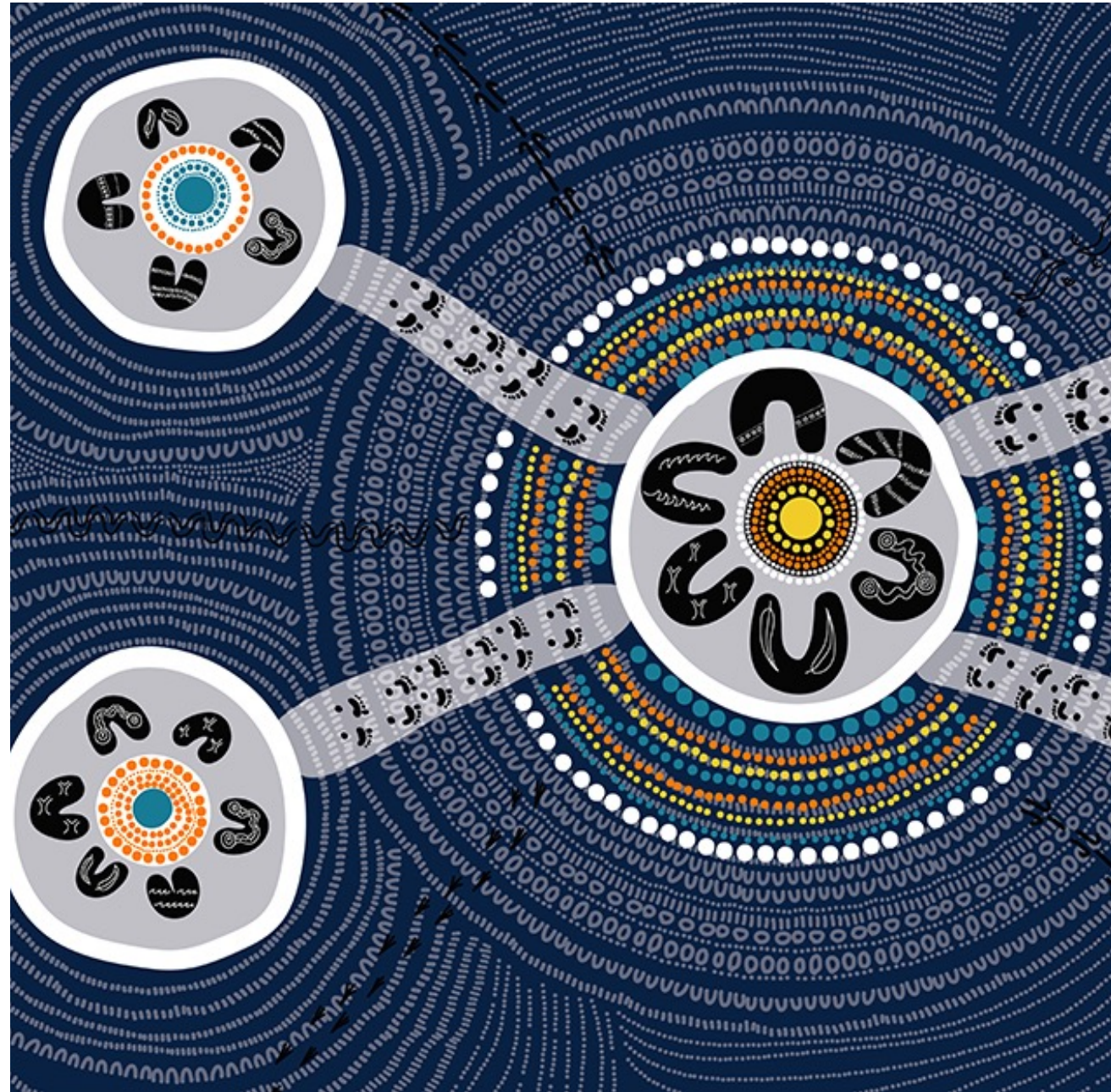


New Member Webinar

Thursday 9 June 2022

Acknowledgement of Country

The Infrastructure Sustainability Council would like to begin by acknowledging the Traditional Custodians of the land on which we meet today. I acknowledge their deep connection to land, water and culture, and pay my respects to their Elders past and present.





The ISC Vision

Ainsley Simpson, Chief Executive Officer



Membership of the ISC

Jane Nicholls, General Manager Industry Engagement

New Member Webinar

10:30 – 11:00am

- Welcome
- The ISC Vision
- Membership of the ISC
- Marketing
- Learning & Development
- Ratings

11:00 – 11:30am

- Expanding the Reach of IS Ratings
- Technical / Working Groups
- ISupply
- Advocacy
- Events & Networking

11:30 – 11:45am

- Q&A

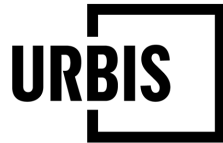


Welcome to Our New Members

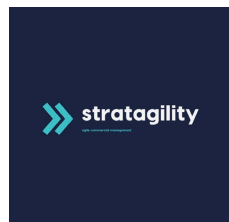
MinterEllison



Jobsbank



ENVIROPACIFIC



Member Value Chain

More than 200 organisations committed to accelerating sustainability through collaboration and contribution

Contractors



Delivery Agency



Government, Policy & Regulation



Consultants



Member Value Chain

More than 200 organisations committed to accelerating sustainability through collaboration and contribution

Supplier



Operator



NFP/Industry Association/SME



Membership



Community, Networking, Engagement

By becoming an ISC member, you gain access to our large community of practice.

Contribute to and **learn** from our many **events, publications, regular newsletters, podcasts, social media comms, thought leadership** and **Annual Impact Report**.

Attend **networking events, forums, webinars** and participate in our **conferences**, accessing preferential pricing.



Knowledge, Learning, Capability

Sustainability is the leadership competency of our time.

Build the capacity of your team (across all disciplines / hierarchy) accessing member exclusive rates and resources on comprehensive and customisable training programs.

Membership



Advocacy and Influence

As **sustainable infrastructure's peak body**, the ISC advocates for the infrastructure and sustainability industries on your behalf.

As an IS Council member, you're invited to **join our regional and project specific working and advisory groups** to help us seek solutions and inform the future of infrastructure sustainability.



ISupply On-Line Showcase

ISupply is an easily navigable **online directory for manufacturers and service providers to profile and promote products and services** which contribute to sustainability outcomes.

Note our **valuePLUS (Premium) Members** enjoy significant **incremental benefits**.

Membership



Preferential Pricing and Access

As a **Member** you receive **deep savings and access** to all ISC activity including:

- **IS Ratings**
- **Learning and development programs**
- **Engagement activity including all conferences, forums, symposiums, webinars and luncheons**
- **Technical working group opportunities**
- **Policy and advocacy coalitions**



Leadership Position

Most importantly of all, **membership of the ISC communicates to your team, government, key stakeholders, opinion leaders and the global community, that you are an organisation committed to ensuring all infrastructure delivers Social, Cultural, Environmental and Economic benefits.**

Showcasing your project outcomes, products and services **alongside the ISC**, is a **powerful demonstration of sustainability commitment and performance**, and will help **inform your mandatory reporting, support access to sustainable finance and escalate your market position.**



Membership Opportunities



Technical Working Groups

Members of the Infrastructure Sustainability Council have the **opportunity to join** one of our **Technical Working Groups** to help **drive positive outcomes** in the infrastructure market and to **support the continuous improvement of the ISC Rating Schemes**.

There are **6 separate Technical Working Groups** which allow members to help shape the future of sustainability in infrastructure as a part of the IS Council's Strategic Plan.



Advocacy/Policy Working Groups

As a member of the Infrastructure Sustainability Council you are invited to **join one of our Member Coalitions** to help us **deepen our understanding, collaborate for impact and advocate and influence** for the sustainable infrastructure agenda.



Learning & Development

Cloda O'Loughlin, Learning Consultant

Training Delivery

Delivering for impact

At the ISC, learner experience and business impact shapes the design and delivery of all our courses.

- On-demand
- Blended offerings
- Private
- Public

Training Packages

Reskilling and upskilling at scale

At the ISC, building the capabilities required to deliver sustainability outcomes is achieved by engaging employee's organisation wide and sharing skills, knowledge and experience.

Executive workshops

Foundation offerings

Rating Skills

RISE Mentoring

Leading sustainability today and tomorrow

With sustainability emerging as a core capability for all future leaders, the ISC mentoring program will:

- Support organisations in investing in their talented people
- Develop mentees as a Next Generation leader in the sustainability profession
- Enable cross industry collaboration and knowledge sharing to build a thriving industry

IS Capability Academy

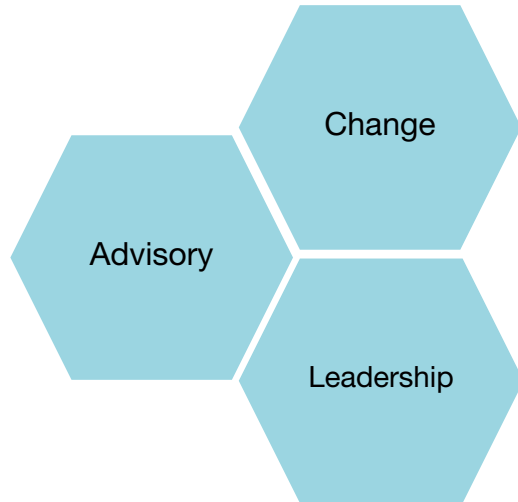
More than skills

Where core technical skills are strengthened by an overlay and application of key success behaviours.

- Effective communication
- Adaptability to change
- Capacity for innovation
- Negotiation & business drivers



LEADERSHIP, CHANGE & ADVISORY



Course	Delivery*	Duration	Cadence
IS FOR EXECUTIVES	In house	3 hours	On request
IS FOR MANAGERS	In house	3 hours	On request
LEADING CULTURE CHANGE	Public	2 days (2 x 4 hours)	Quarterly

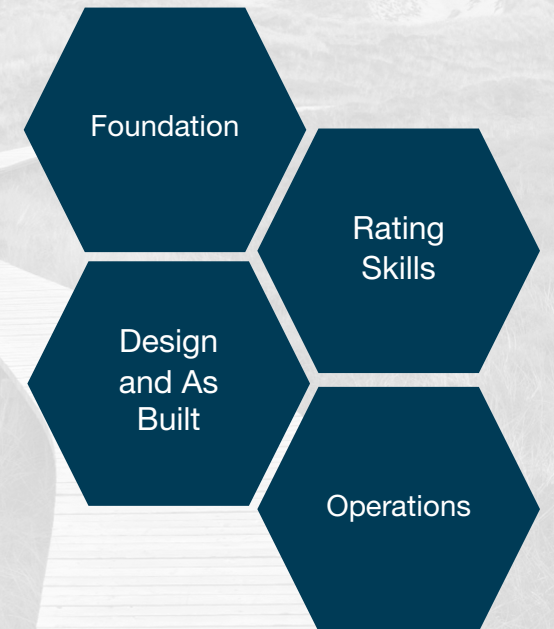
*All public courses can be scheduled as private in-house courses on request.



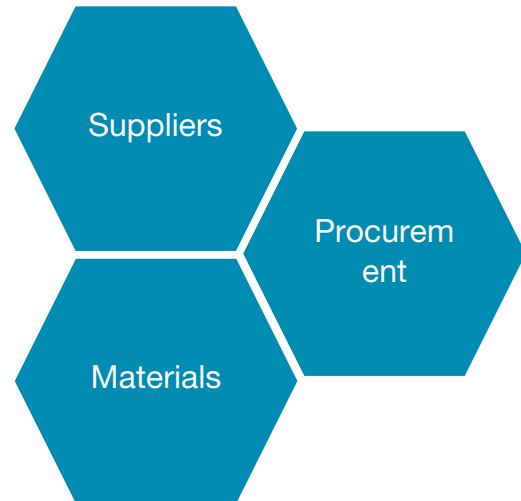
IS PROFESSIONAL PATHWAYS

Course	Delivery*	Duration	Cadence
IS FOUNDATIONS	eLearning	1.5 hours	On demand
IS RATING SKILLS	Public	2 days (2 x 4 hours)	Twice Monthly
IS ACCREDITATION	Public	1 day (4 hours)	Twice Monthly
IS FOR OPERATIONS	Public	2 days (2 x 4 hours)	Quarterly

*All public courses can be scheduled as private in-house courses on request.



SUSTAINABILITY PRACTICES



Course	Delivery*	Duration	Cadence
SUSTAINABLE PROCUREMENT	Public	2 days (2 x 4 hours)	Quarterly
MATERIALS CALCULATOR	Public	2 days (2 x 3 hours)	Monthly
IS FOR SUPPLIERS	Public	2 days (2 x 4 hours)	Quarterly

*All public courses can be scheduled as private in-house courses on request.



Next Steps



Next steps

Initial discussions, proposal request.

Package review and finalise offerings.

Requirements gathering call for in-house offerings, followed by scheduling.

Registration of participants on public courses.

+

Implementation check in, opportunity to review course uptake, provide feedback and discuss further requirements.

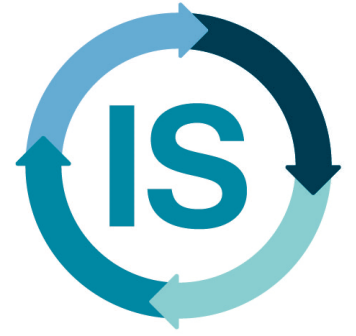


Ratings Overview

Patrick Hastings, Chief Delivery Officer

Quadruple Bottom Line Metrics

IS Rating Scheme: Measure what matters



IS v2.1

Governance	Environment	Social	Economic
Place	Energy & Carbon	Stakeholder Engagement	Options Assessment & Business Case
Leadership & Management	Environmental Impacts	Legacy	Benefits Realisation
Sustainable Procurement	Resource Efficiency & Management	Heritage	
Resilience	Water	Workforce Sustainability	
Innovation	Ecology		



Whole of Life Consideration



Infrastructure
Sustainability
Rating Scheme

Whole of life consideration



4-Step Process



Global Leadership

The most comprehensive and rigorous assessment process.



[Link to paper](#)

Figure 7: Assessment Verification Requirements and Result Aggregation



“The most comprehensive and rigorous assessment process”

“Public procurement practices are a key success factor”
 Highlighting the global leadership across Australia and Aotearoa New Zealand

Rating Scheme Traction

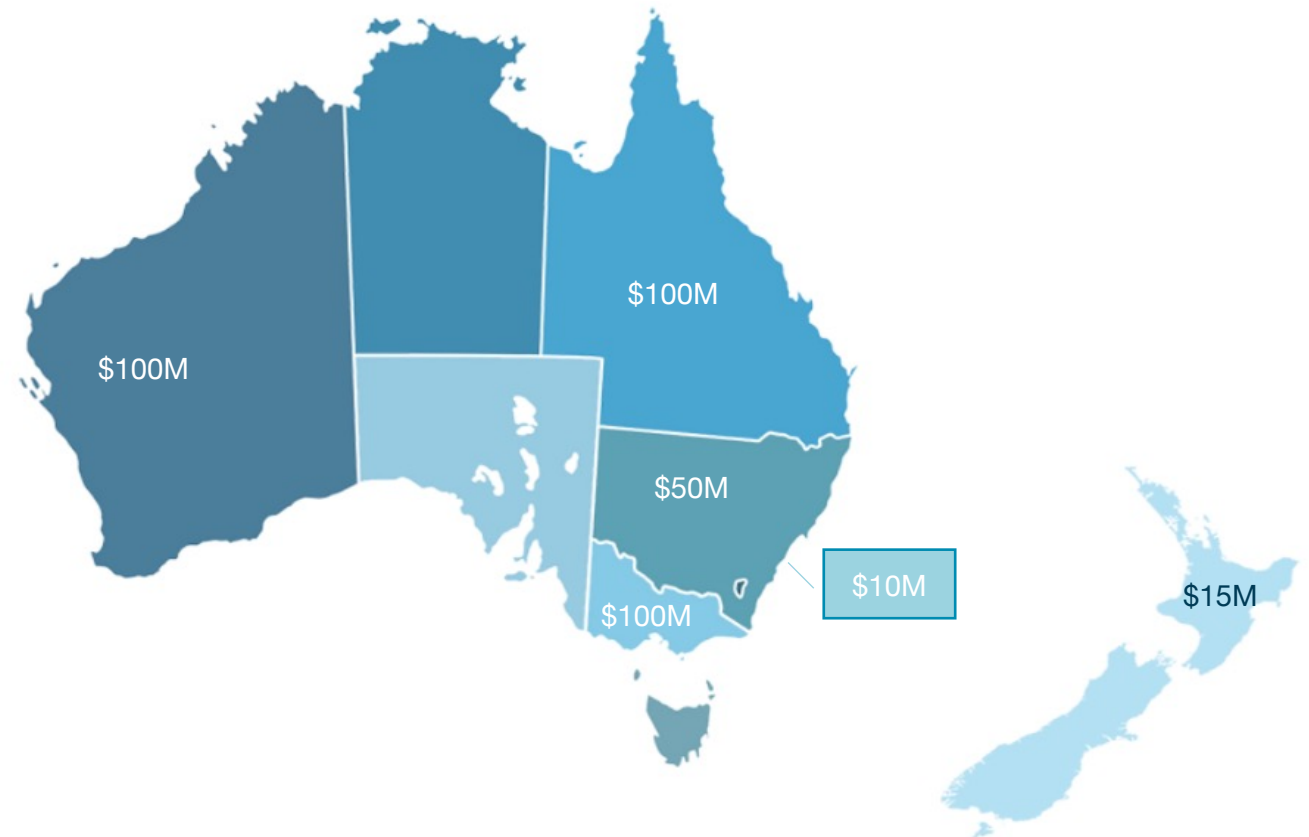
IS is deployed across ANZ to measure and report **sustainability performance** and drive **better infrastructure outcomes** benefiting communities and industry.

330+

Registrations

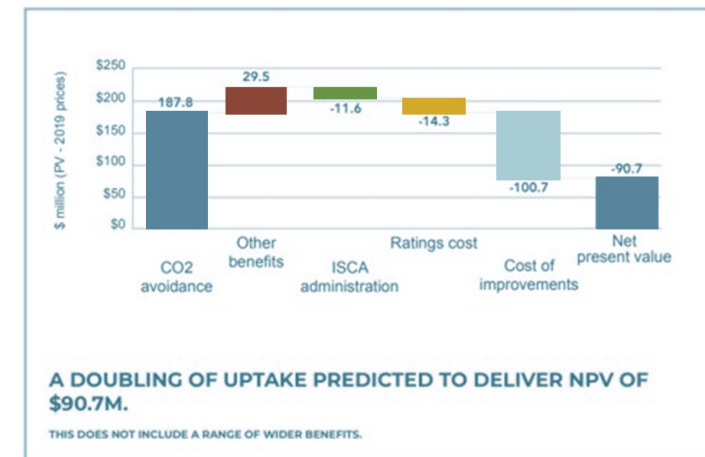
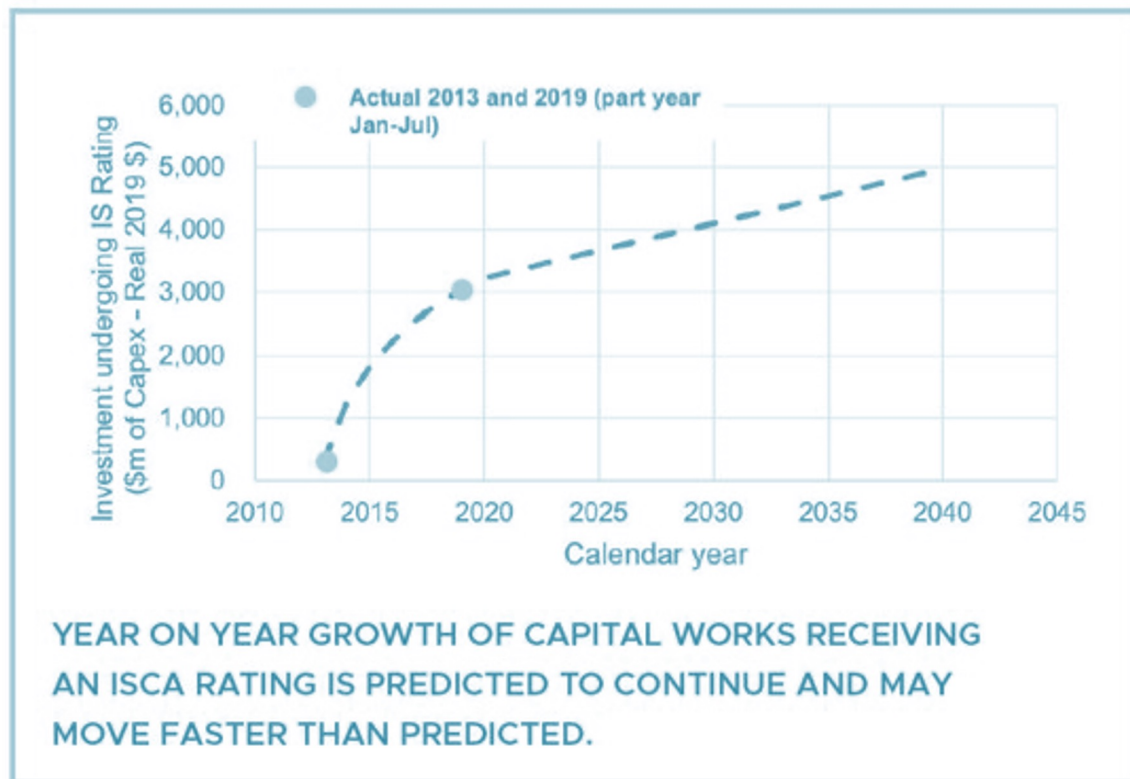
\$217B

Capex



Sustainable infrastructure : ROI

As part of a study undertaken by RPS in 2020 it was determined that there is a return on investment of at least **\$1.60** and possibly as high as **\$2.40** for every dollar spent. This is likely to be a conservative assessment as it does not include a range of wider benefits that are more difficult to quantify.



EXAMPLES OF BENEFITS NOT QUANTIFIED

-  BENEFITS OF OPEN SPACE
-  HEALTH OUTCOMES
-  HUMAN CAPITAL DEVELOPMENT

ANZ Traction and Mandating

The most progressive government agencies, state-owned entities and private asset owners mandate IS based on capex thresholds ranging from \$2m to \$100m.

<i>Location</i>	<i>Agency</i>	<i>Mandating thresholds / requirements</i>
NZ	Waka Kotahi New Zealand Transport Agency	All capital works projects >\$15m
	City Rail Link Ltd	ALL projects in program
NSW	Dept of Planning Industry Environment	ALL Critical state significant infrastructure
	Transport for NSW	ALL projects >\$50m, High risk projects <\$50m
	Sydney Metro	ALL project in program
	Queanbeyan Palerang Regional Council	ALL projects >\$2m
QLD	State Infrastructure Plan	ALL projects >\$100m
	Transport and Main Roads	ALL projects >\$100m
	Dept State Development, Infrastructure Local Government and Planning	Stage 3: Detailed Business Case
WA	Main Roads WA	ALL projects >\$100m
	Office of Major Transport Infrastructure Delivery	Metronet program
ACT	State policy	ALL project > 10m
SA	Dept of Infrastructure and Transport	ALL projects >\$100m
VIC	Major Roads Projects Victoria	ALL projects >\$100m
	Level Crossings Removal Authority	ALL projects in program
	Rail Projects Victoria	ALL projects in Melbourne Metro program
	City of Casey	Capital works projects
AU	Transurban	All capital works projects >\$100m



Latest Projects to Register for IS Ratings

Project	State	Rating Achievement
TAP 3 Waitara Station	NSW	ISv1.2 Design
Caloundra Transport Corridor Upgrade	QLD	IS Essentials
Canning Bridge Bus Interchange	QLD	ISv2.1 Design
High Capacity Metro Trains (HCMT)	VIC	IS Operations
Linkfield Road Overpass Upgrade	QLD	ISv1.2 Design
SH1 Papakura to Drury (Stage 1B)	NZ	ISv1.2 Design
Western Sydney Airport - Surface and Civil Alignment Works (SCAW)	NSW	ISv1.2 Design
SH1 Rolleston Flyover	NZ	IS Essentials
Malabar Biomethane Project	NSW	IS Essentials
Drury Rail Stations	NZ	ISv1.2 Design
Transport Access Program Denistone and Stanmore Station Upgrades	NSW	ISv1.2 Design
Great Eastern Highway Bypass and Kalamunda Road Interchange	WA	ISv2.1 Planning



Latest Projects to Register for IS Ratings

Project	State	Rating Achievement
Metropolitan Road Improvement Alliance	VIC	Excellent
Contract 1 - Enabling Works (CRL) As Built	NZ	Leading
Great Northern Highway As Built	WA	Commended
LXRP NWPA - Bell to Moreland	VIC	Leading
MRPV - Echuca Moama Bridge Project	VIC	Leading
MRPV - Monash Freeway Upgrade Stage 2	VIC	Leading
Western Sydney Airport Bulk Earthworks	NSW	Excellent
LXRP MRPA - Clyde Road, Berwick	VIC	Leading
LXRP SPA - Additional Works Package 2 (AWP2)	VIC	Leading
Leppington & Edmondson Park South Commuter Car Parks	NSW	Excellent





Expanding the Reach of IS Ratings

Monique Isenheim, Head of Market Development

Expanding the Impact of IS ratings

Opportunities to get involved for new members.

MD priority	Opportunity
IS Essentials	<ul style="list-style-type: none">• IS rating for projects < \$100m in CapEx• Currently in pilot phase, accepting pilot projects
ESG/ Sustainable Finance	<ul style="list-style-type: none">• Understand how IS ratings can help investors build a sustainable real asset portfolio• Access preferential funding such as Sustainability Linked loans or bonds
Water	<ul style="list-style-type: none">• Water Sector – IS Advisory Group
Energy	<ul style="list-style-type: none">• Understand how IS ratings can help energy investors and asset owners (esp. renewable energy, hydrogen)
IS International	<ul style="list-style-type: none">• Accepting pilot projects in Asia/Pacific



Technical / Working Groups

Tyrel Momberg, Principal Technical Advisor

ISC Technical Team



**IS Technical Director
Dr Kerry Griffiths**

**IS Principal Technical
Advisor – Tyrel
Momberg**

**IS
Coordinator/Technical
Officer – Gabriela
Echavarria**

**Technical Officer –
Aeindri Sen**

Data Analyst – tbc

+

**IS Project
Managers /
Ratings Team**



Continuous Improvement

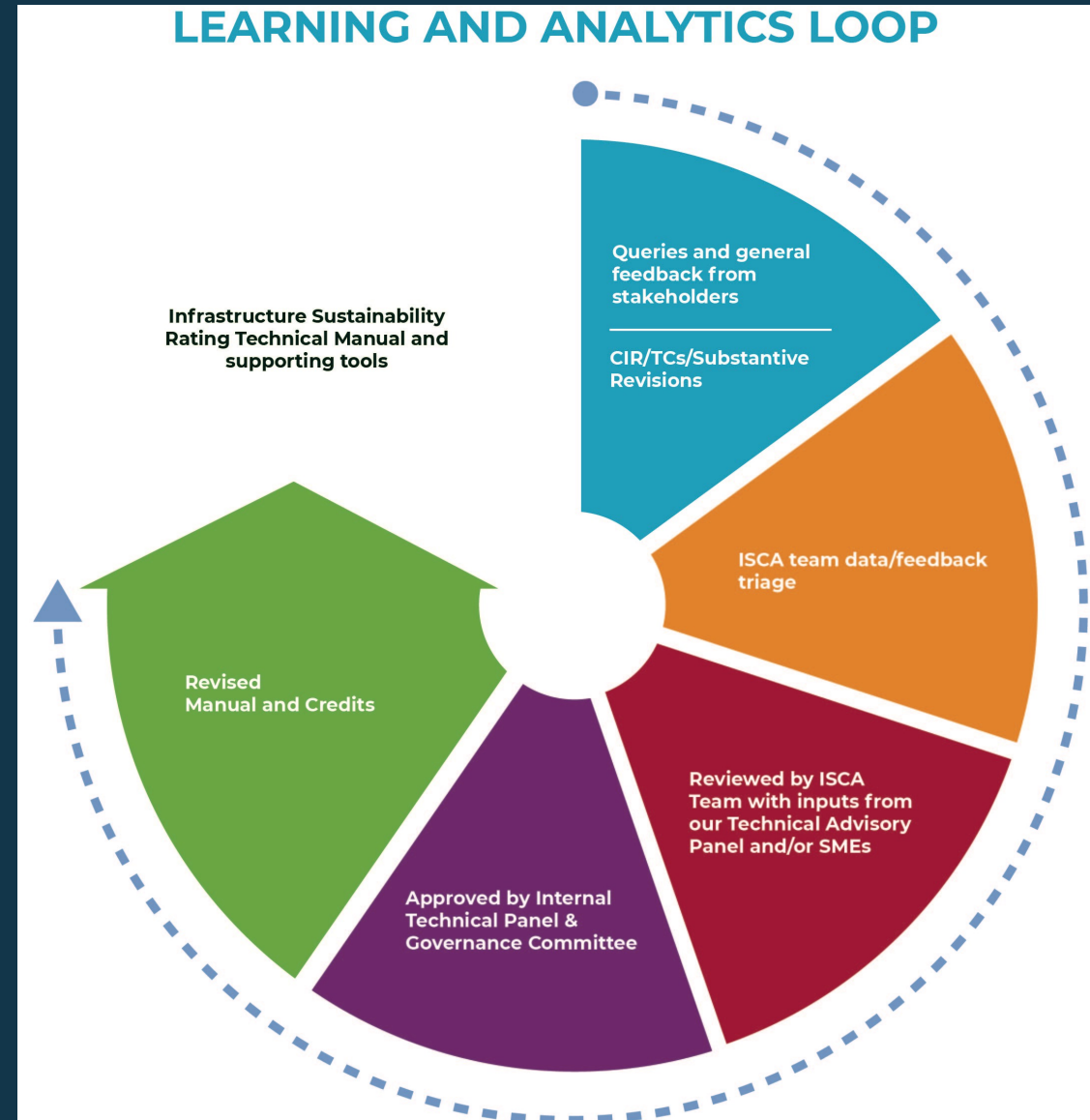
Technical queries from rating projects

Stakeholder consultation in development:

- IS v2.1 Design & As Built
- IS Essentials
- Lan-4 credit

General feedback (website)

Issues raised by working groups



Current Technical Workplan

- IS Essentials (for projects <\$100M)
- IS v2.0 Planning Rating review
- IS Operations Rating – improvements
- IS v1.2 (key rulings; move to v2.1)
- ‘Impact Notes’ development
 - how key issues addressed in the scheme
- Data analytics – driven performance benchmarks
- Technical governance
- Materials Calculator Digitilisation

Possible ‘Impact Notes’ topics:

Modern slavery

Carbon neutral supply chain

Contractualisation of sustainability

Circular economy

Green infrastructure

Placed-based approaches


Beautiful cities

ESG assurance / sustainable finance

Resilience



Materials Calculator - Digitalisation



Infrastructure Sustainability Materials Calculator

Test 1 Bridge 1 footing

[Home](#)
[Unit Conversion Help](#)

Summary:

Project Type: Bridge

Component Type: Other Bridges

bridge span: 10 km

width of bridge: 5 m

[Save Base](#)

	Base		Actual	
Total Materials + Transport:	47.2	546.2	47.2	546.2
Unit:	0.9	10.9	0.9	10.9
	GHG (t CO2-e): IS EnviroPoints v2.0 (Pt)		GHG (t CO2-e): IS EnviroPoints v2.0 (Pt)	

[Add New Base Row](#)

[Save Actual](#)

[Add New Actual Row](#)

[Add New Product](#)

[Submit to Project](#)

Base

Category	Manufacturer	Product	Transport Mode(s)	Distance (km)
Factory	Product Line			
<input checked="" type="checkbox"/>	Aggregates		Rigid Truck	100
<input type="checkbox"/>			Concrete Agitat	100
<input type="checkbox"/>			Concrete Agitat	100

Material Related	0	0
Transport Related	47.2	546.2

Amount (tonnes): 1000

Actual

Category	Manufacturer	Product	Transport Mode(s)	Distance (km)
Factory	Product Line			
<input checked="" type="checkbox"/>	Aggregates		Rigid Truck	100
<input type="checkbox"/>			Concrete Agitat	100
<input type="checkbox"/>			Concrete Agitat	100

Material Related	0	0
Transport Related	47.2	546.2

Amount (tonnes): 1000

Qty Evidence

Transport Evidence

Beta testing of MPV1 - Complete

Next steps: Fix bugs & bring to market in the near future

Technical Working Groups #Leadership

Focus

- Support Development of tools, templates, training content, case studies
- Guidance on benchmarks, technical development

6 Groups

- Proponent Group
- IS Planning Scheme Group
- IS Design and As-Built Scheme Group
- IS Essentials Scheme Group
- IS Operation Scheme Group
- IS Sustainable Materials Group



2nd meetings held April / May 2022

Group workplans being confirmed with several items underway





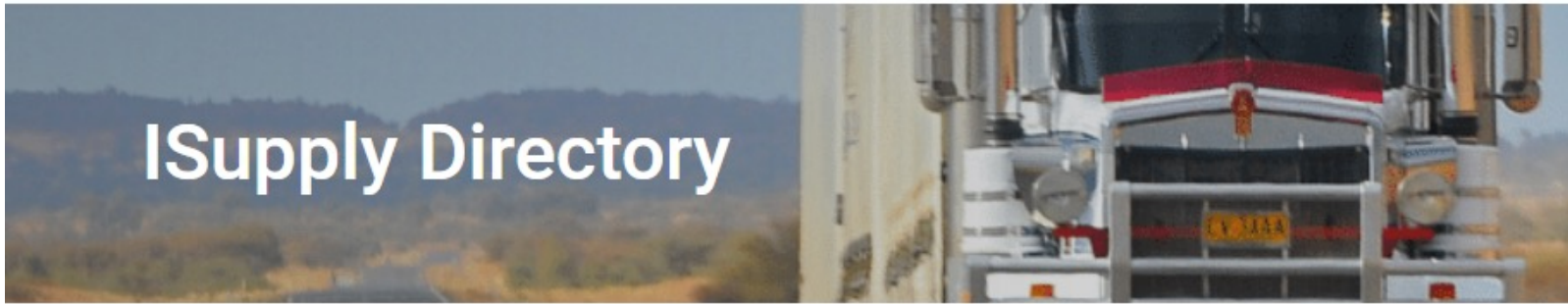
ISupply

Jane Nicholls *for* Danielle Brayne,
Senior Membership & Engagement Support

The What and Why of ISupply

- An easy to navigate online directory
- A marketplace for products and services of potential interest to projects undertaking IS Ratings
- Opportunity to demonstrate sustainability outcomes
- Profile your company
- Take advantage of the ISupply pricing benefits attached to valuePLUS (premium) Membership (5 no charge listings)





ISupply Directory

Search

Search

Product/Service

Show All

Location

Show All

Rating Type

Show All

By Credit

Search

- Man-6
- Man-7
- Mat-1
- Mat-2
- Mat-3
- Pro-1
- Pro-2
- Pro-3
- Pro-4
- Show All



Advisory services and rating support

Inxure provides expertise in project and program assurance across infrastructure sectors. We have worked with all levels of government in policy development, strategic planning and business case development for initiatives that address economic de...

Credits: Con-1, Ecn-1, Ecn-2, Ecn-3, Ecn-4, Ecn-5, Ecn-6, Gre-1, Hea-1, Inn-1, Inn-1, Lea-1, Lea-2, Lea-3, Leg-1, Man-1, Man-2, Man-3, Sta-1, Sta-2



Air Quality Assessment, Management & Monitoring

Viridis has a wealth of experience in environmental air quality assessment including benchmarking, impact assessment, monitoring, and management. Our team consists of experienced sustainability professionals in engineering, architecture, and envir...

Credits: Dis-4, Env-4



BarC Fibre

BarChi made f used to reinfor applica industrial and road pavements, track slabs, shotcre...

Credits: Inn-1, Inn-1, Inn-1, Mat-1, Mat-2, Rso-6, Rso-6, Rso-7, Rso-7



IS Technical Manual Version 1.2



TECHNICAL MANUAL DESIGN & AS-BUILT Version 2.1

The Golden Rules of Successful ISupply Listings

- Link your product/service to a minimum of 1 ratings credit
- Look at what others have done (but keep the ISupply goal in mind)
- Remember to link to associated projects listed on the ISC website where possible
- Short and sharp
- Stick to the facts
- Focus on what will be important to the ratings partner
- Clearly outline the benefits
- No explicit guarantees relating to scores
- Include searchable terminology



Learn more about ISupply



Refer to the ISupply guide available on the web



<https://www.iscouncil.org/ISupply>



info@iscouncil.org



+61 2 9252 9733



Advocacy

Laura Harkins-Small, General Manager, Advocacy

Overview of Advocacy

We partner with members and industry to transform leading, expert thinking into accelerated impact and change. We convene stakeholders to better understand emerging sustainability issues facing infrastructure and the community, and work together to deliver social, cultural, environmental and economic benefits for current and future generations.

Our impact areas

We have four key areas, building on our Vision:



Planet

Working to drive climate action, regenerate our ecosystems and transition to a circular economy.



People

Enabling communities to thrive as they go through structural change and transition, ensuring wellbeing for current and future generations



Prosperity

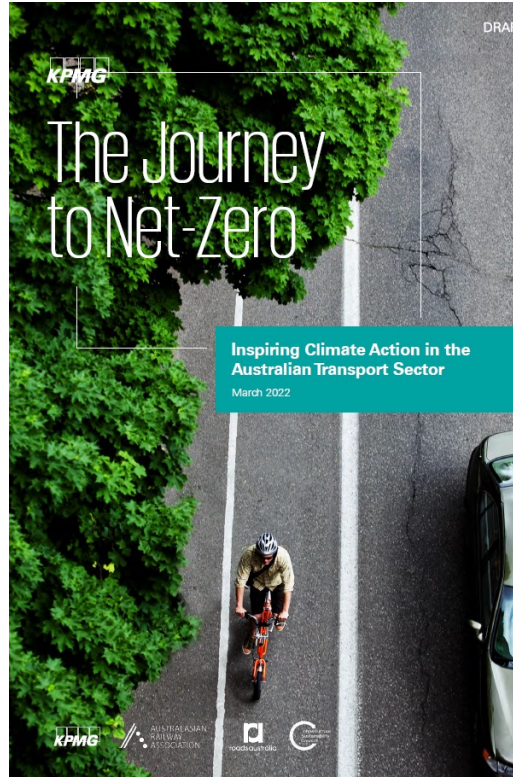
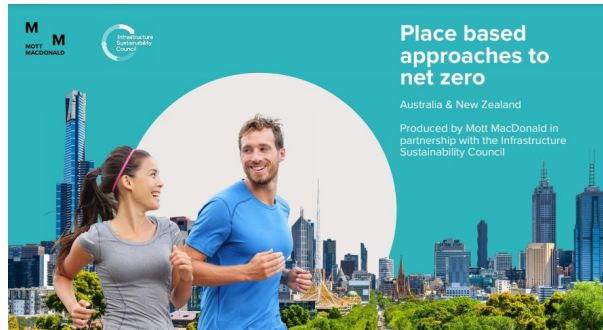
Measuring infrastructure's socioeconomic value so that we can better deliver inclusive, resilient, and sustainable livelihoods and economies.



Industry

Collaborating to build a world-class industry with healthy, inclusive workforce; responsible agile supply chain; and sustainable and aligned investment and governance.

Ambition. Alignment. Action



Member Coalitions



To accelerate impact through knowledge sharing and collaboration

What is an ISC Member Coalition?

We need to drive actions that deliver outcomes - such as net zero, resilience and inclusivity – at scale and at pace, paving the way to a positive future for planet, people and prosperity. ISC Member Coalitions transform leading, expert thinking into accelerated impact and change. **The Coalitions accelerate market and societal transformation for a positive future for people, planet, economy and industry.**

Who is on a Coalition?

A coalition comprises of ISC members who are committed to impact. Diversity makes for richer outcomes and will be part of the selection across age, skills, gender and ethnicity criteria. Coalition members shape the development and lead delivery of coalition workplace. They are supported by coalition partners, associate members, subject matter experts, ISC representations, and the coalition chair.

- Have a long-term commitment to leadership and impact on relevant issue/purpose.
- Are able and willing to participate fully and actively in the Coalition to fulfil the purpose and deliver the workplan of the group.
- Work collaboratively and responsibly with the group as well as across industry to achieve common purpose.
- Act in good faith and with integrity, in line with the ISC values.

ISC Member Coalitions



Industry Transformation - Putting purpose and people at the heart of infrastructure



Climate Action - Accelerating climate action in every town, city and region through a place-based approach.



Resilience - Accelerating systemic resilience so that infrastructure can enable thriving lifestyles, communities and nations, now and into the future.



Inclusion - Accelerating an infrastructure industry that ensures inclusive access to opportunity.



Modern Slavery - Eradicating modern slavery from infrastructure's supply chains.



Circular Economy - Accelerating transition to circular business models and economies in infrastructure.

What does a Coalition do?

A coalition works together to understand opportunities and challenges in the industry on a particular topic or issues. With the intention to develop a workplan to address these challenges.

To deliver outcomes the Coalitions will firstly **develop and scope** a multi-year work plan, the next year they will move into the **implementation of the workplan**, and the third KPI will be to **progress the work plan** and measurement and reporting of outcomes. Lastly the coalition will **develop a legacy document** which outlines how to share and scale the key learnings and outcomes.

Each work plan will be develop a unique approach in response to three key variables:

- The skills, resources and approaches of Coalition members.
- The unique purpose of that group and the issue they are addressing.
- Industry and ecosystem maturity in relation to that specific issue.

Knowledge Development

- Thought leadership
- Case Studies
- Knowledge Hubs
- Training modules
- Research projects

Industry Engagement

- Awareness and consensus building
- Workshops
- Policy campaigns and reform agendas
- Industry presentations and webinars

Supporting implementation

- Principle-based frameworks
- Common methodologies
- Guidance notes
- Tools and templates

Impact Delivery

- Pilot projects and prototyping
- Impact measurement and reporting
- Linkages to IS Rating Scheme
- Reward and recognition

For more information

Lodge your expression of interest to a ISC Coalition at www.iscouncil.org/advocacy

For more information please contact the ISC Advocacy Team
coalitions@iscouncil.org

Laura Harkins-Small | General Manager Advocacy
Carolyn Gibbs | Partnership Manager



Events & Networking

Sally Bunce, Australasian Event Director

Calendar of Events

- Webinar Series
- Certification Events
- Networking Forums
- ISAP Days
- Executive Luncheons
- Thought Leadership Events
- Connect Conferences (Australia & New Zealand)
- Gala Dinner & Awards



ReConnect

Our decade of action for people,
the planet and economy

JUNE 28

2022



Host City
Partner

- Aotea Centre, Auckland – 28 June, 2022
- Full day hybrid conference, networking reception, networking dinner
- Registrations open now

ReConnect Partners



MEMBER OF BW DIGITAL

ReConnect Sessions



**Thriving Nations
Enabled By World
Class Infrastructure –
Our Decade of Action**

**Stepping Beyond
Silos – Sustainability
Leadership for this
Decade**

**Anchors for
Action**

**Tika, Technology and
Transformation –
Infrastructure Delivering
Inclusive Access to
Opportunity and
Resilience**

**Place Based
Approach to Net
Zero – Global
Insights and Local
Intel**



ISC Connect Conference



ISC Annual Awards



Sustainability Leadership

- Excellence in Governance Outcomes
- Excellence in Social Outcomes
- Excellence in Environmental Outcomes
- Excellence in Economic Outcomes
- Outstanding Achievement – IS Design (v1.2 only)
- Outstanding Achievement – IS Design (v2.0 and 2.1 only)
- Outstanding Achievement – IS As Built (v1.2 only)
- Outstanding Achievement – IS As Built (v2.0 and 2.1 only)
- Outstanding Achievement – IS Planning
- Outstanding Achievement – IS Operations



Industry Impact

- Private sector, small
- Private sector, large
- Public sector

Individual contribution to a sustainable future

- Emerging Leader
- Sustainability Champion
- Enduring Impact



How to Get Involved



www.iscouncil.org/events



events@iscouncil.org



+64 21 749 449





||

Q&A