



The Infrastructure Sustainability Council

Annual Gala Dinner & Awards

Sponsored By



IF YOU WANT TO GO FAST, GO ALONE. IF YOU WANT TO GO FAR, **GO TOGETHER.**



Ventia is one of the largest essential infrastructure services providers in Australia and New Zealand. People are at the heart of our business, so we are incredibly grateful that all of tonight's attendees have come together to celebrate the award finalists and support each other in our respective sustainability journeys.

Thank you for supporting the Infrastructure Sustainability Council and for being part of our community.



CREATING A LASTING AND POSITIVE
LEGACY FOR PEOPLE AND PLANET

Our business is predicated on long-term relationships and delivering whole-of-life outcomes.

We specialise in asset management and strive to deliver client-focused, sustainable and innovative solutions to our clients, customers and communities.

We are committed to sharing our knowledge and expertise, so that we can go farther together. Whether you are a client, competitor, or supply chain partner, we invite you to connect with our team.

We would be happy to share with you our insights on whole-of-life asset management, sustainable asset management, and innovative asset management solutions.



Let's go together to eliminate **modern day slavery**

Anderson Camargo represents Ventia on the ISC Modern Slavery Coalition and is deeply passionate about addressing risks across the supply chain.

Anderson's work includes contributing to the development of the ISC Modern Slavery Impact Notes that were published earlier in 2023.

Reach out to Anderson via LinkedIn or e-mail:
anderson.camargo@ventia.com



Let's go together to improve **measure our impact**

Alexandra Monson is Ventia's GM Sustainability and represents us on the ISC Resilience Coalition. Alex holds environmental, sustainability and asset management qualifications; has completed the Australian Institute of Company Director's course and loves infrastructure.

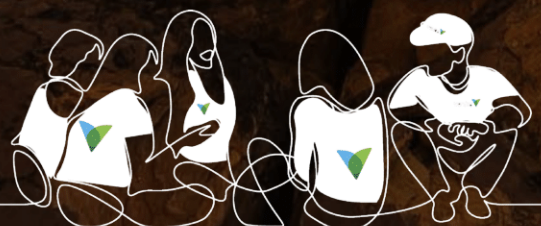
Reach out to Alex via LinkedIn or e-mail to discuss goal setting and measurement of sustainable outcomes:
alexandra.monson@ventia.com



Let's go together to improve **deliver social outcomes**

Loes Westerbeek-Veld is Ventia's Social Sustainability Manager. Loes is the driving force behind our Stretch Reconciliation Action Plan as well as the many amazing diversity and inclusion initiatives across Ventia's business.

Loes would be to happy to share with you many of the things that we do in this space. Reach out on LinkedIn or loes.westerbeek@ventia.com.



Menu



Entrée

NORTHERN TERRITORY BARRAMUNDI CEVICHE
with coconut, chilli, coriander cream reduction and salted crostini

or

JAPANESE MISO GLAZED EGGPLANT AND SOBA NOODLE HERB SALAD
with a toasted sesame dressing

Main Course

VICTORIAN WESTERN DISTRICT LAMB SHOULDER
slow cooked with rosemary, garlic, and citrus zest potato puree

or

MAPLE AND MACADAMIA ORGANIC ROASTED PUMPKIN
with cous cous, fresh mint, pomegranate, sumac yoghurt and orange glaze

Dessert

CHOCOLATE MOUSSE, GOOEY BROWNIE AND MALTESER CRUMB

or

LEMON CURD TART, PASSIONFRUIT COULIS AND CREAM

Gala Dinner Emcee

Peter Helliar is a man of many talents. As a stand-up, a writer, a presenter and a producer Pete excels in everything her undertakes.

Peter created and co-produced two series of the award winning It's A Date for ABC TV, and he wrote, directed and starred in all three seasons of Network 10's widely loved dramedy How to Stay Married, a show that examines the intricacies within relationships when romance has made way for routine.

Pete is a regular fixture on our TV screens, having co-hosted The Project on Network 10 from 2014 through to the end of 2022. He is also the host of Family Feud The Podcast produced for Apple, and he is also the host the very funny podcast You Ain't Seen Nothin' Yet.

Pete has performed stand up for more than twenty years, selling out shows right across the country. He makes the difficult business of being funny look dead easy. In 2021 he performed his brand-new comedy hour Loopy at the Melbourne Comedy Festival. He went on to record Loopy at a one-off exclusive performance at Melbourne's iconic Chapel of Chapel theatre and it is now available to stream on Paramount +.

Pete is the author of the much-loved children's book series, Frankie Fish published by Hardie Grant/Egmont. In 2018, Frankie Fish was voted one of Australia's Top 50 kids books in the annual Better Reading Top 50 Kids Books poll. Pete also co-authored with his wife Bridget Helliar the children's book Trippin' With Kids. At the end of 2022 he released another children's book called Herman Crab.

Pete has been one of Australia's favourite comedians since his first appearance on our TV screens as a core cast member on the Logie Award winning Rove back in 1999. He may have come a long way from Strauchanie – however we can confirm that his French accent has not improved.



About the Awards

The 2023 Infrastructure Sustainability Council Awards continue the Council's well-established tradition of advancing leadership in sustainability by celebrating best practice across the Australia and New Zealand infrastructure sectors by:

- encouraging best practice
- acknowledging leadership
- recognising role models
- rewarding valuable contributions
- promoting leading organisations

This year's awards will exemplify excellence in sustainability across environmental, social, governance, and economic quadruple bottom line outcomes and outstanding contributions to market transformation at organisational, systemic and societal levels.



Annual Award Judges

Alison Scotland,
Executive Director, Australian
Sustainable Built Environment
Council

Andrew Sellick,
Principal - Sustainability, QIC

Charlotte Plaisant-Millecamps,
Director, Sustainable Capital
Markets, Westpac

Craig Doyle,
Chief Executive Officer, NAIF

David Jenkins,
Chief Executive Officer, Institute
of Public Works Engineering
Australasia

Gabrielle Trainor AO,
Acting Chair, Infrastructure
Australia

Geoff Allan,
Chief Executive Officer, Austroads

Jennifer Taylor,
Transformation Lead -
Environment, Construction Sector
Accord

Jon Lamonte,
Entity A Chief Executive, Water
Services Reform National
Transition Unit

Julia Hinwood,
Director - Infrastructure, CEFC

Kristy Graham,
Chief Executive Officer, Australian
Sustainable Finance Institute

Madeleine McManus OAM,
Chief Executive Officer, Centre
for Professional Engineering
Education (CPEE) & Centre for
Pavement Engineering Education
(CPEE)

Matina Papathanasiou,
Founding Partner Global
Infrastructure, QIC

Mike Morgan,
Director Commercial Projects,
Infrastructure South Australia

Nick Leggett,
Chief Executive Officer,
Infrastructure New Zealand

Simona Trimarchi,
Sustainability Manager, CleanCo
Queensland

Stuart Landrigan,
Director, Infrastructure Advisory &
Program Assurance, NSW Public
Works

Teresa Scott,
Executive Director, Australasian
Procurement & Construction
Council

Annual Award Judges

Benita Blunden,
Environmental Specialist, CleanCo
Queensland

Emma Doherty,
Senior Advisor, Accord
Transformation Unit: Design and
Delivery | Digital, Communications
and Transformation

Jonathan Jones,
Head of Education, Institute
of Public Works Engineering
Australasia

Judy Auld,
Sustainability Consultant, BUREAU
VERITAS AUSTRALIA & NEW
ZEALAND

Michael Wilson,
Senior Projects Officer,
Rockingham City Council

Michelle McCormick,
Policy Director, Infrastructure New
Zealand

Nicholas Tonkes,
Partner, Oliver Wyman
Raphaelle Guerineau,
Chief Executive Officer, Siemens
Mobility Australia and New Zealand

Rob Bryant,
Executive Vice President Asia-
Pacific, InEight

Ross Mannering,
General Manager – Transport
Tasmania, pitt&sherry

Susy Cenedese,
Strategy Manager Environment,
Local Government New South
Wales

Tara Hage,
Strategy Manager, Infrastructure
South Australia

Tim Wheeler,
National Policy Manager –
Sustainability and Regulatory
Affairs, Property Council of
Australia

Excellence in Governance Award Finalists

WestConnex M4-M5 Link Tunnels Project **ACCIONA Samsung Bouygues Joint Venture**

Governance played a pivotal role in design and delivery of the M4-M5 Link Tunnels (Project). At the Project's inception, the Senior Leadership established a strong foundation by developing shared values encapsulated in a comprehensive Governance Plan.

This unified approach ensured the diverse sustainability objectives of parent companies were merged seamlessly into a single Sustainability Policy – this influenced significant decision making and facilitated collaboration with the community and supply chain.

The Project was able to:

- Collaborate with the local Bidjigal artists to design the highly visible façade of the ventilation facility.
- Deliver \$65,000,000 spend with Aboriginal Owned Business.
- Empower the largest female workforces on a tunnelling project in NSW.
- Complete construction of the tunnel months ahead of schedule - relieving construction fatigue.
- Reduced Scope 1&2 emissions by 39% during construction.
- Reduce the embodied carbon by 32%.
- Utilise 63% of non-potable water.
- 100% beneficial reuse of spoil and 97% construction waste recycled.

Implementing SEPA's 2022 Sustainability Strategy for Sustainable Construction **South Eastern Program Alliance**

The South Eastern Program Alliance (SEPA) has successfully implemented its 2022 Sustainability Strategy for Sustainable Construction, making significant contributions to the construction sector and achieving UN Sustainable Development Goals.

SEPA's unique approach fostered a sustainable culture through initiatives like the "Zero Carbon Culture," raising awareness and building capabilities. Collaboration with design partners and supply chain partners allowed for the integration of Net Zero principles and low-carbon solutions. The outcomes have been impressive, with emissions reduced by 43 per cent on the Hallam level crossing removal project and significant savings in Scope 2 emissions.

SEPA's initiatives have benefited team members, suppliers, and the broader industry, promoting sustainable practices and shared responsibility. The legacy lies in the upskilling and empowerment of stakeholders, driving sustainable practices beyond SEPA. By integrating sustainability throughout the project lifecycle, SEPA sets an example for the industry, contributing to a more sustainable future.

Preston Level Crossing Removal Project

North Western Program Alliance

In 2022, the North Western Program Alliance (NWPAA) completed the Preston Level Crossing Removal Project ('the Project'); a complex rail infrastructure upgrade that included the removal of four level crossings, construction of two kilometres of elevated rail viaduct, two new premium stations and precincts, and extensive open spaces in Melbourne's inner north.

Key to holistic sustainability success was the early embedment of sustainability during project development, using governance mechanisms, including:

- Optioneering and Multi Criteria Analysis
- Partnerships and collaborations
- A continuous improvement approach
- Early engagement with community

The Project's governance framework was critical to the achievement of sustainable solutions, with these four initiatives realised:-Single-Line Running-Radiant Heat Curing-Indigenous engagement and design-Local community developed solutions. NWPAA's governance and sustainable solutions have left a legacy for the Preston community, have been shared across the industry, and can be adopted or adapted for other rail and infrastructure projects in Australia.

Tonkin Gap Project and Associated Works

Tonkin Gap Alliance

The Tonkin Gap Alliance has implemented a robust Sustainability ethos that has permeated through the entire team. Processes were developed to drive sustainability consideration in decision-making, risk and opportunity assessment and procurement, creating a culture of sustainability and providing an integrated sustainability governance approach that has contributed to substantial outcomes across resource efficiency, procurement and workforce.

Outcomes of governance processes:

- Significantly exceeded contractual target of \$10 million Aboriginal business spend, with a new stretch target set for \$30 million,
- Substantial onsite reuse of materials and use of over 200,000T of recycled materials,
- Implementation of three Australia First innovations through comprehensive decision-making and supplier engagement processes,
- 'Sustainability Essentials' initiative rolled out to wider team, enhancing team comprehension around sustainability.

The Project's legacy extends beyond the physical and social infrastructure, to the development and learning opportunities experienced by the whole team.

EastLink WA
EastLink WA Integrated Project Team
(BG&E, GHD & Main Roads Western Australia)

EastLink WA is Main Roads WA's largest road infrastructure project bringing together over 40 years of road planning activities. The project encompasses over 80km of road infrastructure and is notably, the first project in Australia to adopt a program rating approach for the ISC v.2.0 Planning rating.

Eastlink WA's sustainability approach has focused on extensive stakeholder and community engagement and environmental studies to enhance design outcomes. Robust governance processes have enabled sustainability solutions to be effectively identified and integrated throughout the project's design development, for implementation in future project phases.

The IPT developed a decision-making framework to enable consistent consideration of all relevant factors, including technical, social, environmental, and economic aspects, throughout the project's lifecycle.

A 'Silver' rating has been awarded for the funded Reid Highway grade separation sections of the project, highlighting the enhanced social, environmental and economic benefits achieved through the project.

Award Sponsored by



Excellence in Economics Award Finalists

Bunbury Outer Ring Road **South West Gateway Alliance**

The South West Gateway Alliance (SWGA), in partnership with Main Roads WA, is delivering the transformational infrastructure project, the Bunbury Outer Ring Road (BORR).

Within this project, the SWGA has developed sustainable industry goals focusing on procurement and local business engagement, working in collaboration with local business, organisations and State Government agencies to create opportunities for lasting social and economic improvements within the South West.

The processes and policies put in place, are recognised within industry as a contemporary best practice delivery model, which is supporting greater collaboration with local business and industry, the delivery of important local content objectives and a sustainable workforce strategy.

SWGA are leading a proactive and dynamic approach to meeting business objectives and ensuring that the project spend meets and exceeds targets, delivering local opportunities to local businesses.

Townsville Ring Road (Stage 5) - positive Economic Outcomes Through Collaborative Regional Embankment Design **The Department of Transport and Main Roads (TMR), georgiou Group and AECOM**

Townsville Ring Road (Stage 5) is a \$230 million Bruce Highway Upgrade project being undertaken by Georgiou Group and design partner AECOM on behalf of the Department of Transport and Main Road's Northern District.

The project team demonstrated excellence in economic outcomes through collaborative development of alternative technical specifications when designing and constructing embankments, that utilised locally available and site won materials.

The project's achievements resulted in the successful implementation of an alternate specification, leading to market benefits, knowledge growth, and the potential for broader industry adoption. These benefits will extend to future construction projects in the region by enabling the use of locally available resources and suppliers.

The Rozelle Interchange Project & Western Harbour Tunnel Southern Tunnel Works

John Holland CPB Contractors JV

As the contractor for the \$4.6 billion Rozelle Interchange Project and Western Harbour Tunnel Southern Tunnel Works, JHCPB has developed and delivered a robust training and development strategy to build NSW's workforce capability & support the local economy. Through its dedicated Training Academy, JHCPB has delivered targeted skills training, apprenticeship and traineeship programs, and pre-employment programs, with a particular focus on engaging workers from diverse and disadvantaged backgrounds.

To date, the Project has engaged 249 trainees and apprentices, of which 7% identify as Indigenous. JHCPB has also delivered over 62,000 hours of accredited training to help educate, upskill and fill roles across some of Australia's largest public infrastructure projects, and stimulated the local economy through targeted engagement of local workers and enterprises. The Project has delivered over 183,000 hours of training in total, creating a genuine skills legacy for the industry's construction sector, and contributing to closing the construction skills gap.

Award Sponsored by



Excellence in Environmental Award Finalists

Cairns Southern Access Corridor Stage 3: Edmonton to Gordonvale Project

**The Department of Transport and Main Roads (TMR) and HSA Group
(John Holland, Seymour Whyte, AECOM)**

The Cairns Southern Access Corridor (Stage 3), Edmonton to Gordonvale (E2G) project tackled the challenge of emissions reduction by implementing carbon reduction and circular economy initiatives. The project innovatively constructed over 10km of pavements through a combination of a Concrete Extruding Slipform Paver and substituting 100% recycled plastic fibre reinforcement in place of steel.

This Australian-first method led to raw materials reduction, increased productivity, and repurposed waste. Through collaboration with a local supplier the project developed a Queensland-first initiative, six solar hybrid systems that significantly reduced diesel use while providing reliable 24hour power.

The project team observed substantial GHG emissions reduction and benefits to both the workforce and stakeholders. Other initiatives include using recycled glass bedding sand and the onsite crushing and reuse of waste concrete. E2G has demonstrated a commitment to innovative and enduring environmental outcomes, paving the way for a more sustainable future in the construction industry.

Cranbourne Line Upgrade- Eumemmerring Creek Bridge Western Program Alliance

Completed in 2023, Western Program Alliance (WPA) delivered the Cranbourne Line Upgrade project that included rail bridges over Eumemmerring Creek & Abbotts Road. Forming part of six kilometres of duplicated track, Eumemmerring Creek is an ecologically significant and sensitive habitat to endangered native fish species that are protected by Environment Protection and Biodiversity Conservation Act 1999.

Eumemmerring Creek combines with Dandenong Creek to form Patterson River, that flows into Port Philip Bay. Environmental requirements were strict and incorporated into the design, delivery, and maintenance of the bridge.

The team minimised the environmental footprint of the works by using a launching truss system for the bridge construction. Service installations were completed via horizontal directional drilling under the watercourse to mitigate any potential drilling fluid risks to the sensitive ecology. The result was innovative design and construction methodologies delivering the required engineering scope and best practice environmental management outcomes.

Energy Connect

Secure Energy

ElectraNet and Transgrid are partnering to deliver an energy interconnector between the power grids of South Australia (SA) and New South Wales (NSW), with an added connection to Victoria.

The NSW Section of EnergyConnect is the first project of its kind in Australia to undertake Infrastructure Sustainability (IS) Design and As-built ratings. Transgrid's construction delivery partner, SecureEnergy has set numerous sustainability targets under a rating agreement with the Infrastructure Sustainability Council (ISC).

Sustainability-centred Design Objectives:

- Reducing carbon footprint through using innovative guyed towers and sustainable concrete mixes in regional Australia
- Develop an Environmental Product Declaration (EPD) through the project supply chain for a significant product (concrete)
- Minimising the impact on carbon sequestration through reduced land and vegetation clearance
- Reducing packaging waste within the supply chain
- Return and earn recycling and food waste diversion from landfill waste initiatives

Innovative use of recycled crushed glass as sand replacement in structural concrete – Tunnels & Stations, Metro Tunnel Project

Cross Yarra Partnership Design and Construction Joint Venture (CYP D&C) consortium consisting of John Holland Pty Ltd, Lend Lease Melbourne Metro Pty Ltd and Bouygues Construction Australia Pty Ltd

CYP Design & Construction (CYP D&C) is delivering the 'Tunnels and Stations' package for Melbourne's Metro Tunnel Project. In collaboration with the University of Melbourne, Holcim Australia and Vortex Industrial Solutions, CYP D&C is supporting an innovative research study including field trials of using recycled crushed glass as a virgin sand replacement in structural concrete.

This trial showcases circular economy principles by reducing the reliance on virgin sand for concrete mixes. Concrete mixes using 25% glass as sand replacement were trialled in temporary structural works applications at the project's La Trobe site for the construction of the new State Library Station, with potential to increase the sand replacement to up to 80% in future trials.

To the best of our knowledge, the use of crushed glass waste as a sand replacement has not been used in structural concrete for any building or infrastructure projects in Australia, if not the world.

Metro Trains Melbourne Biosite Management Program - Protecting and enhancing biodiversity values within an urban rail environment

Metro Trains Melbourne

Metro Trains Melbourne is delivering an industry-leading initiative to improve and maintain the condition of 30 biosites of significance that contain threatened flora and fauna. During a review of the program in 2022-23, a 314% increase of threatened species abundance and 3 ecological communities had been recovered compared to baseline records.

Central to the programs achievements is the introduction of a cool season ecological burning program which has reintroduce the natural 3-5 year burning cycle to restore Biosites and conserve threatened species. An additional 10 biosites were added as the program rolled out.

To add value to the Biosite initiative, Metro is partnering with Rail Infrastructure Alliance on a habitat enhancement and connectivity initiative to connect several fragmented biosites along the Sunbury line. This includes a partnership with the University of Melbourne on a grassland direct seeding trial to determine the applicability of grassland restoration approaches within a rail environment.

Award Sponsored by



Excellence in Social Award Finalists

Bruce Highway Upgrade Bribie Island Road to Steve Irwin Way (Exit 163) Project

The Department of Transport and Main Roads (TMR) and ACCIONA

The Bruce Highway Upgrade: Caboolture-Bribie Island Road to Steve Irwin Way - Contract 1 Project team successfully doubled its new entrant training target, nearly doubled its Indigenous business spend, and beat its Indigenous employment hours target by more than 750%.

But behind the statistics and targets are real-life examples of individuals who have undertaken career- and life-changing career training, and Indigenous employees and businesses who have seized opportunities for economic growth and formed legacybuilding partnerships.

ACCIONA's approach to diversifying its workforce and engaging with Indigenous subcontractors is setting new standards across the Queensland construction industry, actively contributing to the achievement of the UN Sustainable Development Goals. In particular, SDG8 Decent Work for Economic Growth, SDG4 Quality Education, and SGD10 Reduced Inequalities.

Bunbury Outer Ring Road (BORR)

South West Gateway Alliance

The South West Gateway Alliances (SWGA) Yaka Dandjoo program focuses on building meaningful career pathways for unemployed and job-transitioning participants, especially for young people, women, people over 45 years of age, and Aboriginal people.

The program includes mentorships, training, and preparatory modules to enable participants to work on major infrastructure projects in WA, and ongoing support/upskilling to ensure sustainable employment opportunities for graduates in the region. Since its launch in October 21, 60% of the graduates have been female and 60% have been Aboriginal. One of the key challenges over the last year has been the low unemployment rate in the South West region, approximately 3.4%. Although it has become more challenging to find suitable participants who are unemployed and live locally, we have nonetheless recently celebrated reaching a milestone of 140 graduates.

The program continues to provide greater opportunity for local individuals and more jobs for the region.

Cairns Southern Access Corridor Stage 3: Edmonton to Gordonvale Project

**The Department of Transport and Main Roads (TMR) and HSA Group
(John Holland, Seymour Whyte, AECOM)**

The Bruce Highway, Cairns Southern Access Corridor (Stage 3) Edmonton to Gordonvale (E2G) project has integrated social sustainability in its operations, leaving a lasting impact. E2G has focused on integrating with the local community, preserving cultural heritage, upskilling local businesses and the workforce, and promoting education.

In collaboration with the local Traditional Owners, E2G identified and protected Indigenous artifacts, heritage sites, and fostered an appreciation for cultural heritage through cultural inductions, artwork, and infrastructure naming. To date 79.6% of the total contract value was spent within the local region, and 4.5% with Indigenous-owned businesses. E2G's training initiatives exceeded their targets and upskilled the community, notably with 64% of training hours dedicated to Aboriginal and Torres Strait Islander people.

The project's work with local schools also offered mentoring and experiential learning for students. Through these initiatives, E2G has created a sustainable legacy, demonstrating social excellence and positive community impacts.

Promoting Indigenous Engagement and Reconciliation at Western Sydney International Airport **CPB ACCIONA Joint Venture**

The completion of major earthworks for Western Sydney International Airport (WSI) by CPB and ACCIONA Joint Venture in March 2023 marked Australia's largest civil earth moving project. The project team used its extensive scale to address important industry and community issues.

Indigenous engagement and reconciliation were prioritised, with WSI establishing a Reconciliation Action Plan (RAP) as a framework. The RAP aimed to leverage the organisation's influence to support national reconciliation, overcome inequality, and foster healing. Through the implementation of the RAP, opportunities were created for First Nations peoples and businesses. Key initiatives included indigenous workforce and business engagement, celebratory events, indigenous artwork, accredited cultural training, interactive cultural activities, Indigenous Career days, archaeological investigations, and ongoing consultation.

The project's impact will extend beyond the construction phase, leaving a lasting legacy of Indigenous empowerment and a strengthened relationship between Indigenous and non-Indigenous Australians.

The Rozelle Interchange Project and Western Harbour Tunnel Southern Tunnel Works

John Holland CPB Contractors JV

The Rozelle Interchange Project and Western Harbour Tunnel Southern Tunnel Works, being delivered by John Holland CPB Contractors Joint Venture (JHCPB), has driven positive social inclusion outcomes through its extensive Aboriginal Participation in Construction (APiC) Program.

The Project has set a new industry benchmark for its commitment to Aboriginal engagement, having invested over \$132 million in qualifying Aboriginal employment and businesses. Over 25 Aboriginal businesses and 590 Aboriginal workers have contributed to the delivery of the Project.

The Project also will integrate Aboriginal elements into the future Rozelle Parklands, a new green parkland almost 10 hectares in size that will be delivered as part of the Rozelle Interchange Project. Aboriginal artworks, heritage signage, native bush foods, yarning circles and an Aboriginal place name will all serve to enrich the parkland with Aboriginal culture and history, and leave a long-lasting legacy for Aboriginal inclusion in Sydney's Inner West.

Award Sponsored by



Private Sector Finalists

Diversity, Equality & Inclusion at ACCIONA

Facing the challenges of sustainable development is possible thanks to people's talent, engagement, and leadership. This is why ACCIONA understands Diversity as a source of talent that brings a key competitive edge to stand out from the rest. It also considers Equity and Inclusion as top priorities in people management and essential assets to boost sustainable development and the defence of human rights.

ACCIONA has led the way in Diversity, Equity and Inclusion in Australia and New Zealand through its Gender-Neutral Parental Leave Policy, including benefits such as part time work at full pay from week 26 of pregnancy, its approach to Flexibility, paid Significance Leave to all salaried and blue-collar employees, a free Vacation Care Program and focus on co-creation of strategies, programs and initiatives with its people and key stakeholders.

Australian Spatial Analytics and Ventia Partnership

Ventia and ASA formalised their partnership in 2022; committing to engage 25 analysts in Ventia work by mid-2023 and relocating ASA's Melbourne team to Ventia's Office. ASA, a work-integrated social enterprise primarily employing autistic individuals under 30, now has over 110 employees and aims to reach 300 by 2036. To date, Ventia has engaged 32 ASA analysts with more planned.

ASA's partnership with Ventia has grown from an NBN design and as-built contract, employing 14 analysts each month, to now include geospatial mapping and land management services for Ventia's Social Infrastructure and Defence portfolios.

Ventia benefits from ASA's efficient and accurate services, as well as their commitment to neurodiversity and inclusion. The integration of ASA's team into Ventia's Melbourne office has improved the technical teams' skills and confidence. Ventia actively promotes the partnership internally and externally, referring ASA to other enterprises and showcasing its success through awards and media engagement.

ENVIROMESH - The Palm Island Aboriginal Shire Project

Enviromesh prides in its commitment to the environment and sustainable construction. We provide solutions and engineering support to replace steel mesh in concrete.

In 2022, we made a conscious decision to prioritise and support any infrastructure projects in remote and Indigenous communities and rural parts of Australia, which could benefit from our experience, especially with Local Council projects.

This is best highlighted through the recent prioritisation of the Palm Island Aboriginal Shire Council civil upgrade projects that have used eMesh to replace steel mesh reinforced concrete and have built new and repaired existing infrastructure to achieve significant project objectives of building resilient infrastructure using innovative solutions with sustainable outcomes, reducing the cost of construction and carbon footprint, reducing, recycling or removing old infrastructure waste on their island, creating training and employment opportunities for the local community and supporting the growth of their local economy.

McConnell Dowell Constructors

Diesel generated power is responsible for a massive amount of the world's CO2 emissions. And the construction and infrastructure sector is responsible for a significant part of that.

The partnership between McConnell Dowell and Black Stump Technologies to remove the use of diesel power from McConnell Dowell's operations will result in annualised CO2 savings of 8,800 tonnes and potential annualised commercial savings of AU\$6Million when fully implemented. These forecasts are supported by data collected on collaborative projects to date.

This initiative has already achieved significant annualised CO2 savings of more than 400,000 kilograms and annualised diesel fuel costs savings in excess of AU\$200,000. The initiative has proved popular among site staff who have embraced the new technology which is now being used across several sectors of the McConnell Dowell business. This initiative is an important step in McConnell Dowell's journey to achieve its strategic goal of Net Zero.

Ventia

Ventia's commitment to social sustainability is having a positive impact on people, communities, and environment. In 2022, Ventia made significant progress in this area, achieving a number of positive outcomes. Ventia was awarded the prestigious Rainbow Tick for its commitment to creating an inclusive workplace for LGBTQIA+ people.

Ventia's work to provide employment opportunities for people with disability is also having a positive impact on the wider community, with over 150 people with disability employed. By providing these individuals with jobs, Ventia is helping them to become more independent and self-sufficient. This is having a positive impact on their families and communities, and it is also helping to break down stereotypes about people with disability.

Ventia is committed to continuing to share the outcomes of its social sustainability initiatives. By sharing its stories and learnings, Ventia hopes to inspire other organisations to take action and create a more sustainable future.

Award Sponsored by



Public Sector Finalists

North East Link Program

In an industry first, North East Link has adopted version 2.1 of the Infrastructure Sustainability (IS) Rating Tool. Adopting IS v2.1 is a major step change for infrastructure sustainability as the newly released technical manual includes credits that promote best practice and reflect necessary updates required to meet the current sustainability challenges and opportunities faced by the industry.

As Victoria's largest ever road project, North East Link has worked closely with the Infrastructure Sustainability Council (ISC) during the final stages of development for the revised rating tool. North East Link is also engaging early with the market to support the infrastructure sector's transition to the latest version of the rating tool and alongside the ISC are working collaboratively with industry stakeholders to support the transition and adoption.

Transport for NSW

The Transport Access Program (TAP) is a NSW Government initiative delivering safe, modern and accessible public transport infrastructure across the state.

Protecting our heritage listed stations, strong commitments to the Transport Stretch Reconciliation Action Plan and Transport Sustainability Plan, our station upgrades have implemented integrated Aboriginal cultural heritage design, installed heritage interpretation and public artwork providing excellence in social outcomes.

This has built sustainability capacity with our delivery partners in undertaking consultation with local communities and engaging with Aboriginal artists. TAP projects have seen the installation of artwork and interpretation pieces such as Como, Banksia and Towradgi stations transitioning to integrated local stories and themes into the fabric of the upgrade such as the Unanderra station upgrade.

TAP has driven innovative sustainable outcomes from our delivery partners with outcomes such as the installation of Como station solar glass canopy an Australian first in rail corridor.

Office of Major Transport Infrastructure Delivery (OMTID)

The Office of Major Transport Infrastructure Delivery (OMTID) combines teams from both Main Roads WA (MRWA) and the Public Transport Authority (PTA), delivering transport projects with a cost of over \$100 million.

To ensure the highest level of efficiency, the Resource Efficiency Action Plan (REAP) was implemented to monitor progress and identify areas for improvement. As a result, OMTID has implemented organizational changes, such as hosting quarterly workshops and forums to share knowledge. In collaboration with experts from the private sector, OMTID has championed the use of recycled materials in infrastructure projects, and a Materials Reuse Platform was created to list excess materials.

OMTID has set targets to reduce materials, water, and energy usage, as well as, to divert waste from landfill. OMTID strongly believes in working together with both the public and private sectors to drive meaningful change in the transportation industry.

Award Sponsored by



NSW Public Works
Department of Regional NSW

Emerging Leader Finalists

Alyssa Slaney **Laing O'Rourke**

Alyssa Slaney is Laing O'Rourke's Project Sustainability Manager working on Central Station Metro (CSM). She has led and collaboratively delivered sustainability outcomes for CSM and other major projects well above contractual requirements.

Her work on CSM delivered significant sustainability outcomes including the Green Star Design Review World Leading 6-Star achievement for Sydney Metro assets of Central Station. She has also championed the use of biodiesel, solar PV systems, water conservation and materials reuse to reduce the project's environmental impact.

Alyssa's work is characterised by a care for the community, working closely with local charities. She is active in nurturing the next generation and acknowledged for always sharing her knowledge with colleagues and industry.

Alyssa's significant contributions have been recognised and appreciated. "Alyssa's strong leadership qualities, excellent stakeholder engagement skills and passion for sustainability have seen her accomplishments unparalleled on the CSM project," John Cosgrove, Laing O'Rourke Project Director, CSM.

Ellen Worthington **Aurecon**

Ellen is recognised throughout the transport industry in Australia and New Zealand as an advocate for encouraging all industry participants to consider what role they can play in the delivery of sustainable and resilient outcomes. Her impact is far reaching, across geographies, organisations and demographics. She actively engages with the industry to bring forward sectorwide collaboration and policies with a plan that anchors the role of infrastructure design in decarbonisation. Her leadership and innovation has demonstrably enhanced the inclusion and integration of sustainability into major infrastructure projects.

Ellen is described as passionate and persistent in her approach to sustainable infrastructure and has worked extensively across Australia and New Zealand over the last six years enabling the realisation of great sustainability outcomes on major transport projects. She influences and challenges both senior and junior colleagues alike and is always challenging them to do better.

Jessamine Welsh

Spark NEL D&C

Jess is a skilled sustainability professional who has worked across multiple industry-shaping infrastructure projects, including water, mining and transport infrastructure sectors. Jess applies a balance of technical and human skills to her passion for accessibility of knowledge, skillfully utilizing a natural ability to communicate complex technical information in a way that is understandable to non-technical stakeholders. This ensures that she is able to move innovative solutions from the planning phase through to execution – effectively bridging gaps between multidisciplinary parties required to cooperate to effect change.

Lucas Bateup

ACCIONA

Lucas Bateup is a young Sustainability Professional, working with the Southern Program Alliance in Melbourne. In the two short years working for ACCIONA, he has emerged as an influential individual who consistently pursues a positive impact in Decarbonisation, influencing stakeholder engagement and is a respected peer amongst team members.

He is continually giving back to others, working with successive graduates to assist them in their career development through practical engagement. Lucas successfully brings people together in conversation, to gain agreement to pursue opportunities in the build of new assets, resulting in significant CO2e emission reductions and operational improvements. Recently his work has influenced design changes at the new Glen Huntly Rail Station to incorporate the use of dimmable lights across the new Station concourse resulting in a saving of 812 kwh a year (730 kg CO2e); considered a First across the Level Crossing Removal Program.

Morgan Foster

Arup

Morgan is Senior Sustainability Engineer with Arup. She has applied her sustainability experience to drive design and built solutions throughout the transport sector with specific experience in rail, roads and aviation across multiple sectors and geographies. Morgan was responsible for the management of the sustainability performance targets and requirements on the Gippsland Line Upgrade. Leveraging internal research and collaboration with ecologiQ, Morgan realised circular material outcomes and reduced the Project's overall carbon footprint by maximising existing track through optimising track tamping and recycling ballast for shoulder profiling. Notably, Morgan facilitated a night time vulnerability assessment, applied within an infrastructure context for the first time in Australia. The assessment has provided a foundation for greater discussion about the importance of holistic night time design to improve perceptions of safety for women and girls. She is a technical advisor to MRPV and the global sustainability lead for Arup's Rail Skills Network.

Award Sponsored by



Australian Government

Department of Infrastructure, Transport,
Regional Development, Communications and the Arts

Enduring Impact Finalists

Amy Elkington **GHD**

As a recognized leader in the infrastructure sustainability sector, Amy has the ability to create ripple effects, influencing others across the industry to change, regardless of their position, career pathway or company, as without widespread commitment to change, true transformation is not possible.

Such change includes the implementation of the IS tool for the first ever As Built and Planning ratings. This step signifies a paradigm shift in the industry, emphasising the importance of considering sustainability throughout the entire lifespan of infrastructure projects. Amy's key skill lies in effectively translating sustainability principles into practical applications, equipping teams with tools and resources to embed sustainability into their decision-making.

In the context of updating the IS Planning tool with the ISC, Amy aims to inspire projects to prioritize sustainability from the outset. By doing so, infrastructure can meet present needs without compromising the future.

Berenize Peita **City Rail Link**

Berenize Peita, Link Alliance Social Outcomes Legacy Manager, has changed the way we work in infrastructure. Through her leadership, with the support of our CRL Mana Whenua partners, te ao Māori (the Māori world) is a more valued part of how we operate. Setting a precedent for the sector, social outcomes and a diverse, healthy and inclusive workforce in Aotearoa.

Social Outcomes initiatives started by Berenize have led to 100% of the Link Alliance home company mana whenua, Māori, Pasifika and youth in training, 33 rangatahi (youth) graduating from a Progressive Employment Programme (PEP) and over \$95m being spent with Māori and Pasifika owned businesses.

Christopher Royal **Transport for NSW**

Chris Royal is a passionate sustainability leader who is amplifying change across the Transport sector nationally through strong leadership and an unrivalled focus on bettering sustainability outcomes. Through inclusion and an open-door philosophy, Chris enables his team to make tangible change focusing on our energy and resources on getting the most effective and efficient outcomes for the transport customers of NSW.

Chris's approach is about inspiring and empowering our people and partners to continuously find innovative solutions, promoting the world-class outcomes that we achieve, for others to share and replicate. Chris is courageous to trial new initiatives and sustainability innovations.

Chris Bourne **ACCIONA**

In an industry confronted with pressing climate challenges, Chris Bourne is a valued Sustainability Leader working with project teams and influencing external stakeholders to find solutions to empower the industry's Decarbonisation journey.

Over the last 17 years Chris has embedded ESG principle into decision making, placing a strong emphasis on the social aspects of Equity and Inclusion in the workplace through governance. He has been consistent in his support of increasing diversity in construction, through mentorship and developing facilitated pathways for new entrants.

He has collaborated with multiple industry bodies involved in developing national guidelines, carbon monitoring tools and a common language to embed new ways of working - with a focus on ensuring measurable outcomes linked to emissions reductions, renewable energy pursuits, materials replacement, community engagement and social justice. Chris continues to shape a legacy that has set our people on a sustainable path to embrace innovation.

Rebekah Pokura-Ward **Waka Kotahi**

Rebekah is a senior environmental and planning practitioner with experience across the public and private sectors. Qualified in law and environmental science, Rebekah has led the environmental and planning teams on many of Aotearoa New Zealand's major infrastructure projects. Her work in environmental, social and sustainability areas has seen her win several industry awards, highlighting her incredible work with communities in public infrastructure projects. Rebekah's career has been guided by the Māori whakataukī/proverb:

"He aha te mea nui? Māku e kii atu, he tāngata, he tāngata, he tāngata. What is the most important thing in the world? Well, let me tell you, it is people, it is people, it is people" Over the course over her career, she has continually promoted the importance of genuinely engaging with communities, understanding them, the past, the present and the future, and what people's aspirations are, to deliver excellent results.

Award Sponsored by



Outstanding Achievement Award Finalists

Cheltenham & Mentone Level Crossing Removal Project **Southern Program Alliance, ACCIONA, ACCIONA Rail, Level Crossing** **Removal Authority, Metro Trains Melbourne & WSP**

The Southern Program Alliance (SPA) team removed three level crossings and delivered two new rail stations in Cheltenham and Mentone. The team incorporated sustainability initiatives into significant decision making, aimed at decarbonisation, improving workforce diversity, engaging with community, and protecting heritage assets.

The team's success was anchored in the recognition of residents' sense of 'place' and values and factored into every stage of decision making - to create new public spaces and deliver one of the largest and unique projects as part of Victorian Government's Level Crossing Removal Project. The Project undertook extensive stakeholder engagement, incorporated Indigenous design elements across the two new station precincts and significantly reduced carbon emissions by employing renewable energy sources in construction and permanent station operation.

The outcomes of the Project have been extensively shared with other Level Crossing Project Alliances and positively influenced change across the industry.

Cross River Rail Tunnel & Stations: Constructing Sustainable **Legacies for Queensland** **CBGU JV**

Cross River Rail Tunnel & Stations includes the design and construction of 5.9 kilometres of twin tunnels under the Brisbane River and CBD. Awarded a 'Leading' IS Design Rating, the project's collaborative approach to sustainability has led to outstanding outcomes across people, planet and economy.

For people, the project has raised over \$150,000 for the Leukaemia Foundation, partnered with educational institutions to boost STEM education, and provided significant contributions to Brisbane's indigenous history and non-indigenous archaeological heritage.

For the planet, the project has forecasted an emissions reduction of over 135,000 tonnes through a wide variety of design and construction initiatives.

For the economy, the project has left legacies improving workforce capability, bridged the gap between employment pathways and a diverse coalition of funding agencies, and reduced cost to local economy through innovative engineering solutions.

The outcomes from this project will leave a lasting legacy for Queensland across all pillars of sustainability.

Edithvale, Chelsea & Bonbeach Level Crossing Removal Project

Southern Program Alliance, ACCIONA, ACCIONA Rail, Level Crossing Removal Authority, Metro Trains Melbourne & WSP

The Southern Program Alliance successfully removed five level crossings and constructed three new rail stations in Edithvale, Chelsea and Bonbeach, as well as the connecting shared use path. Sustainability was incorporated in design and delivery at all levels, and delivered great outcomes including significantly improved vegetation levels, energy efficient stations and integrated Indigenous heritage elements and art. The project has improved connectivity across the Frankston Line for pedestrians and vehicles and revitalised local shopping villages.

The Edithvale, Chelsea and Bonbeach project has demonstrated the highest level of excellence in incorporating sustainability outcomes and protecting environment assets into delivering one of the largest and unique projects for LXRP, using lessons learnt to continue to adapt and implement improved ways of working to deliver proven sustainable outcomes.

Parramatta Light Rail Stage 1 - Infrastructure Contract

Parramatta Connect, a CPB Contractors and Downer EDI Works 50:50 joint venture

Stage 1 of Parramatta Light Rail connects Westmead to Carlingford with a 12-kilometre, two-way track featuring 16 stops and 12 new or refurbished bridges; proudly delivered by Parramatta Connect, a 50:50 joint venture between CPB Contractors and Downer EDI, on behalf of TfNSW.

Our training initiatives provided training and employment for women in non-traditional roles, First Nations people, apprentices, and young, mature, and disadvantaged workers. We committed to preserving and maintaining Parramatta's rich historical and cultural significance, incorporating an enhanced urban realm, grass track and wire-free areas into our design, and providing active transport links that promote the community's physical, mental and social health.

Industry innovations included macro synthetic fibres and an enhanced rail boot system in the track slab construction resulting in significant sustainability benefits. These initiatives and sustainable reuse of materials all contributed to receiving the recordbreaking ISC 'As-Built' score of 104.35, demonstrating a true legacy-leaving project.

West Gate Tunnel Project

CPBJH JV, Major Transport Infrastructure Authority and Transurban

The West Gate Tunnel Project has always had a focus on sustainability and the legacy that it will leave for the surrounding community. We've provided a great place to work for priority job seekers and developed a skilled local workforce who are ready to build infrastructure for the years ahead. We've connected with local businesses to support the local economy and engaged with thousands of students across 100 primary schools with the West Gate Kids program.

Once complete, there'll be more than 14km of walking and cycling paths, and nine hectares of open space, encouraging people outdoors. Amongst our achievements are four Australian First Innovations which include the veloway, a safe and efficient tunnel design and a new engineering benchmark for the industry.

We're proud of the positive change this project has had on so many lives and that it will continue to benefit the community for generations to come.



WWW.ISCOUNCIL.ORG