



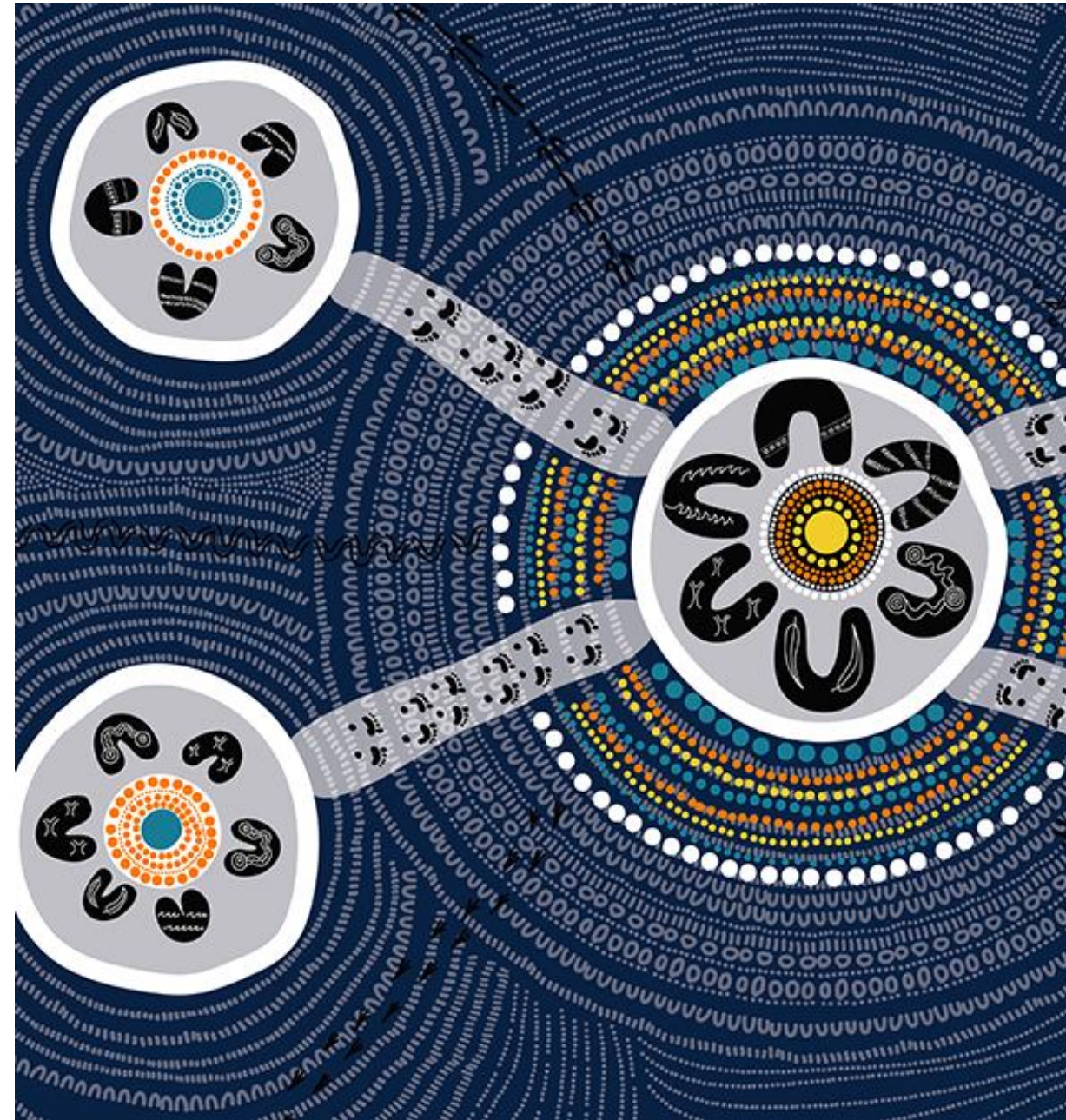
||

Suppliers in the Spotlight

21 March 2024

Acknowledgement of Country

The Infrastructure Sustainability Council would like to begin by acknowledging the Traditional Custodians of the land on which we meet today. I acknowledge their deep connection to land, water and culture, and pay my respects to their Elders past and present.



Agenda



1

Craig Skipsey



2

Nicolas Morel



3

Steph Holland



4

Evan Smith



5

Jackson Ellis



6

Windsor Fick





Makinex Renewables

Craig Skipsey, General Manager – Renewables



MAKINEX[®]
RENEWABLES



Decarbonizing Construction

Makinex History



17

Years

Supplying the
construction sector in
Australia/USA

8

out of 12

of the worlds largest hire
and rental companies
sell our products

4

Years

Rigorous R&D and field
testing of our
renewables products



Australia

SOUTH AUSTRALIA

NEW SOUTH WALES

Canberra
6
ACT

Gold Coast

Goyder substation

Mylor

Nagambie

Charlemont

Magenta

~35 HPS Currently Deployed

Hybrid Products

Fully integrated system with solar, storage and backup generator



HPS15 / HPS20
Single Skid



HPS45
Twin Skid



HPS75
Container

Solar Products

Paired with storage / generator solutions for renewable power generation



Container Top Solar
CTS5



Field Solar
FS5



Site Shed
Solar
SPV3

Storage Products

Paired with generator and solar solutions



Battery Energy
Storage System
BESS10



Battery Energy
Storage System
BESS50



Battery Energy
Storage System
BESS100



CTS

HPS

SPV



ISC Credits

Direct contribution



Ene-1 Ene-2

Energy and Carbon (Ene)	Ene-1	Energy and carbon monitoring and reduction	To reward monitoring and minimising of energy use and GHG emissions across the infrastructure lifecycle.
	Ene-2	Renewable energy	To reward investigation of, and use of, renewable energy.

ISC Credits

Indirect contribution



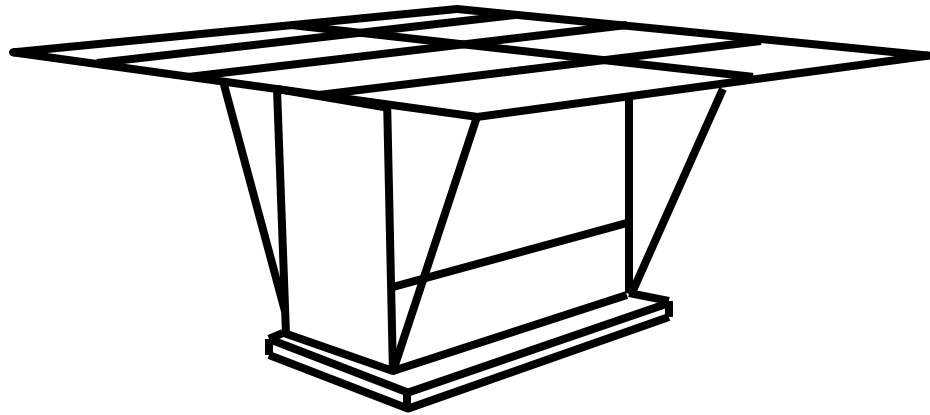
Dis-2 Dis-3 Dis-4

Discharges to Air, Land
and Water (Dis)

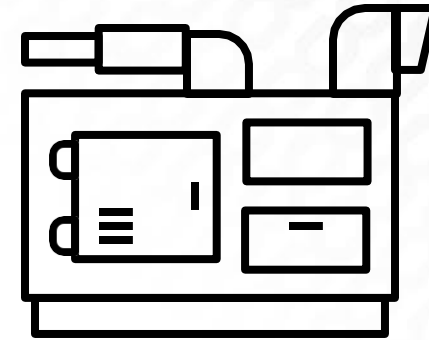
Dis-1	Receiving water quality	To reward the management of impacts on local receiving water quality.
Dis-2	Noise	To reward the management of noise impacts.
Dis-3	Vibration	To reward the management of vibration impacts.
Dis-4	Air quality	To reward management of air quality impacts.
Dis-5	Light pollution	To reward prevention of light spill.

HPS Generator Runtime

Typical genset runtime in a HPS vs BAU Genset



VS



1.2

24

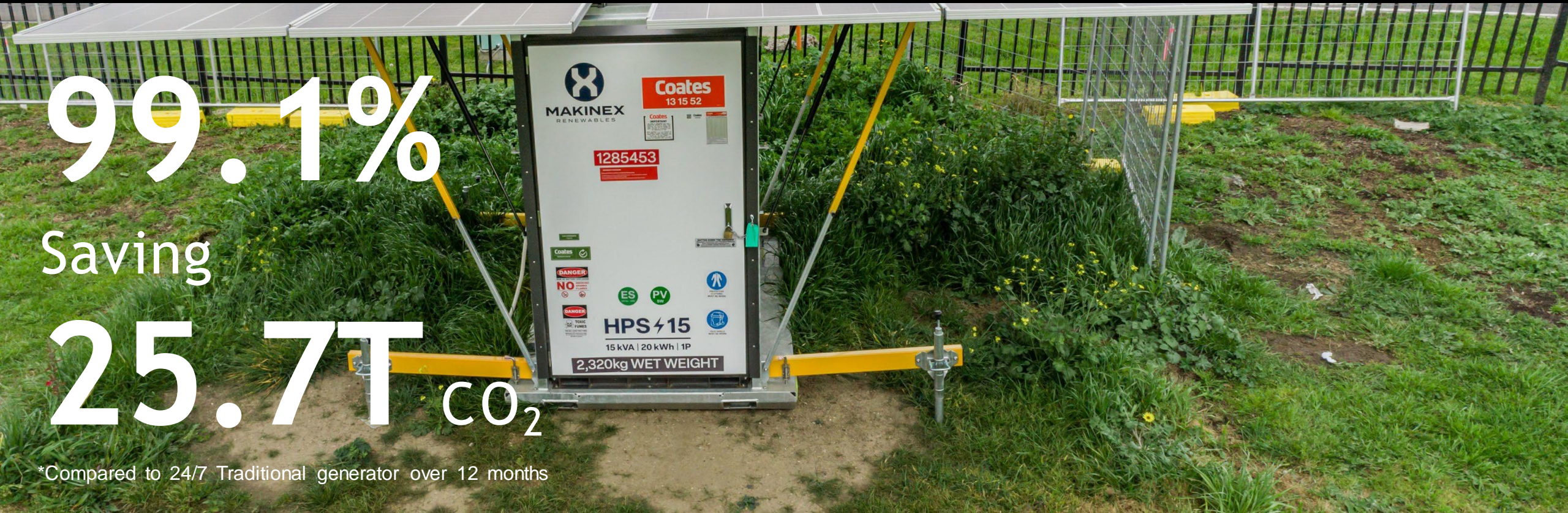
HPS 15 Mickleham Road Upgrade

99.1%

Saving

25.7T CO₂

*Compared to 24/7 Traditional generator over 12 months



HPS15 Upper South Creek

85.4%

Saving

38T CO₂

*Compared to 24/7 Traditional generator over 12 months



HPS20 Major Road Interchange, Mylor SA

92.7%

Saving

30.5T CO₂

*Compared to 24/7 Traditional generator over 12 months



HPS20 Princes Hwy Corridor Upgrade

83.2%

Saving

22T CO₂

*Compared to 24/7 Traditional generator over 12 months



HPS45 Murray Basin Rail Project

92.6%

Saving

82.4T CO₂

*Compared to 24/7 Traditional generator over 12 months

KENNARDS
HIRE



HPS45 Shepparton Line Upgrade



97.2%

Saving

86.6T

CO₂

KENNARDS
HIRE

*Compared to 24/7 Traditional generator over 12 months

Contact Us



Mauricio Gonzalez
Business Development
Manager

+61 428 748 240
m.gonzalez@makinex.com.au



Craig Skipsey
General Manager

+61 481 217 521
c.skipsey@makinex.com.au



InEight

Nicolas Morel, Business Development APAC,
Energy Transition





EMPOWERING SUSTAINABLE PROJECT DELIVERY THROUGH CONNECTED DATA

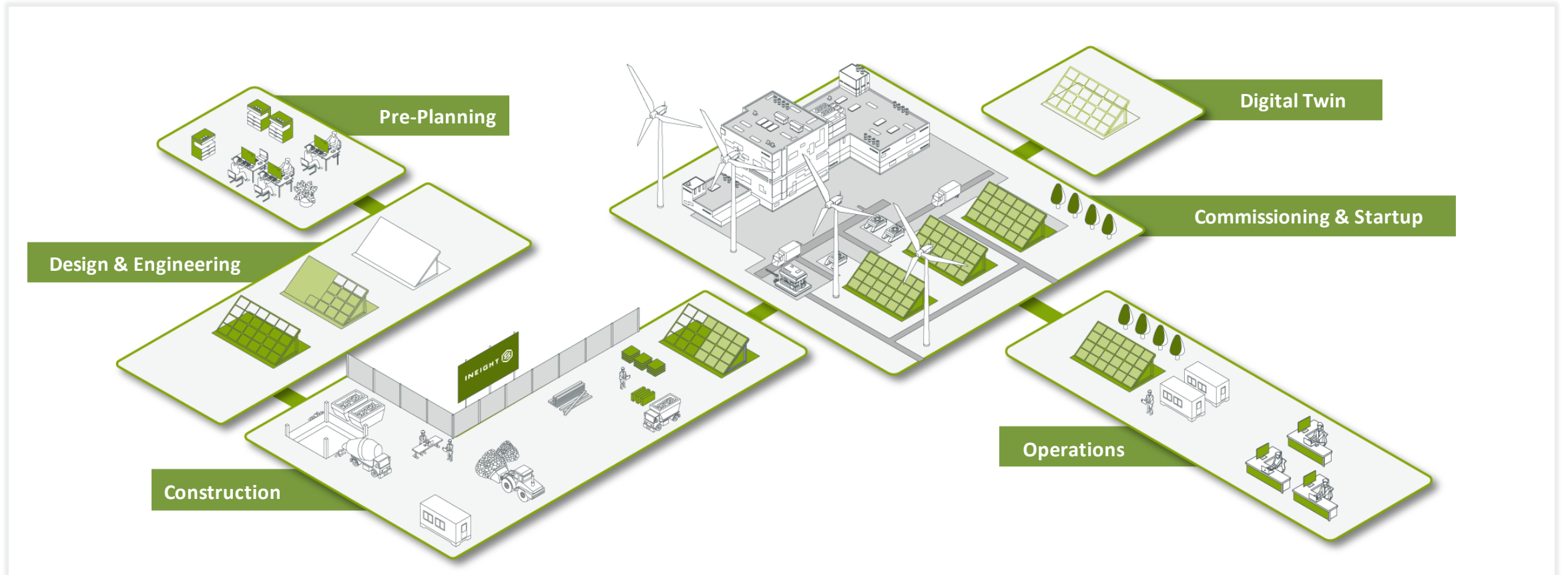
ISC Supplier Webinar | 21 March 2024



Project Certainty powered by InEight

SUSTAINABILITY ACROSS THE PROJECT LIFE CYCLE

Sustainable Project Management integrates environmental, economic, and social requirements from project inception. Trusted for over 30 years, our industry expertise offers unparalleled insight into the challenges encountered by asset owners, contractors, and engineers. Gain control of your projects, mitigate risk, and boost efficiency with our cloud-based solutions, leading to enhanced sustainability outcomes during the construction phase of your projects.



WHO WE ARE AND WHAT WE DO?

InEight is a global leader in project and program management software in the cloud, connecting people, knowledge and workflows through all aspects of capital projects.



CONNECTED CONSTRUCTION PLATFORM



PROJECT INFORMATION



COST & SCHEDULES



CONTRACTS & CHANGE



DESIGN & CONSTRUCTION OPERATIONS

575,000+ users

500+ Staff (APAC 100+)

In 60 countries

Across 8 talent hubs

InEight offers the most functionally complete, interoperable and modular software platform built to optimize project and program workflows, control scope, costs and schedules, reduce risk, and drive predictable outcomes.



INTEGRATED PROJECT MANAGEMENT PLATFORM

Business
Process
Areas



- CAPITAL PLANNING
- DOCUMENT CONTROL
- ENGINEERING MANAGEMENT
- QUANTITY TAKEOFF MANAGEMENT
- ESTIMATING & PRICING
- COST BUDGETING & FORECASTING
- EARNED VALUE MANAGEMENT
- REVENUE MANAGEMENT
- CONTRACT MANAGEMENT
- CHANGE MANAGEMENT
- WORK PLANNING & PACKAGING
- WORK PROGRESSING
- HEALTH, SAFETY & ENVIRONMENTAL COMPLIANCE
- PROJECT SCHEDULING
- RISK MANAGEMENT
- DESIGN COORDINATION
- QUALITY MANAGEMENT
- STARTUP & COMMISSIONING
- PROJECT TURNOVER / DIGITAL TWIN
- PROJECT & PROGRAM REPORTING

Core
Capabilities





ResourceCo

Steph Holland, Strategy Delivery Manager



An aerial photograph of a construction site. A blue excavator is positioned in the center, with its bucket raised. To its left, two white trucks are parked. The truck in the foreground has "RESOURCECO" written on its side. The ground is a mix of dirt and gravel. The company name "ResourceCo" is overlaid in large, dark green letters across the center of the image, with two red curved arrows pointing towards the text.

ResourceCo

DIVERSE RESOURCE RECOVERY

ResourceCo is a nationwide leader in maximising the value in an extensive range of waste streams.

Our expertise in repurposing construction and demolition, commercial and industrial waste and soils offers our clients integrated solutions to material disposal and re-supply.

With extensive experience and nationwide networks, we manage projects across residential, industrial, commercial, and infrastructure sectors, embracing the operational efficiencies and sustainability benefits of material reuse while reducing costs with integrated end-to-end solutions.



OUR BUSINESS

30 
YEARS EXPERIENCE

90% 
RESOURCE RECOVERY

60 
MILLION TONNES OF
WASTE RECYCLED
AND REPURPOSED

7 
MILLION TONNES
OF WASTE PER ANNUM

CO₂ 
ONE OF THE LARGEST
CONTRIBUTORS TO CARBON
ABATEMENT IN AUSTRALIA

25 
WASTE RECYCLING PLANTS
IN AUSTRALIA AND ASIA

2.5 
MILLION TONNES OF
CARBON ABATEMENT



TYRE RECYCLING



A ResourceCo Company



99%
RESOURCE RECOVERY



20K TONNES
RUBBER CRUMB
PRODUCED P/A



120K TONNES
TDF PRODUCED P/A



SOIL REUSE & RECYCLING



80%
RESOURCE RECOVERY



**REAL TIME
MATERIAL TRACKING
WITH FULL CHAIN
OF CUSTODY**



**5M CUBIC METRES
REUSED & RECYCLED P/A**



SAND



SOIL



COMPACTABLE FILL



PACKING SAND

ENERGY



EXPERIENCE IN PRODUCING
ENERGY FROM WASTE



OVER
1M TONNES
PEF PRODUCED



90%
RESOURCE RECOVERY



LOW CALORIFIC PEF



HIGH CALORIFIC PEF

RECYCLING & WASTE



2M TONNES
CONSTRUCTION
WASTE RECYCLED P/A



**GEOGRAPHICALLY
SPREAD**



90%
RESOURCE RECOVERY



7MM AGG



**CL2/3/4 RECYCLED
CONC.**



**CL2/3 ROCK WET
MIX**



**10-14MM & 20MM
AGGS**

SUSTAINABILITY HIGHLIGHTS



4.61 million tonnes recovered



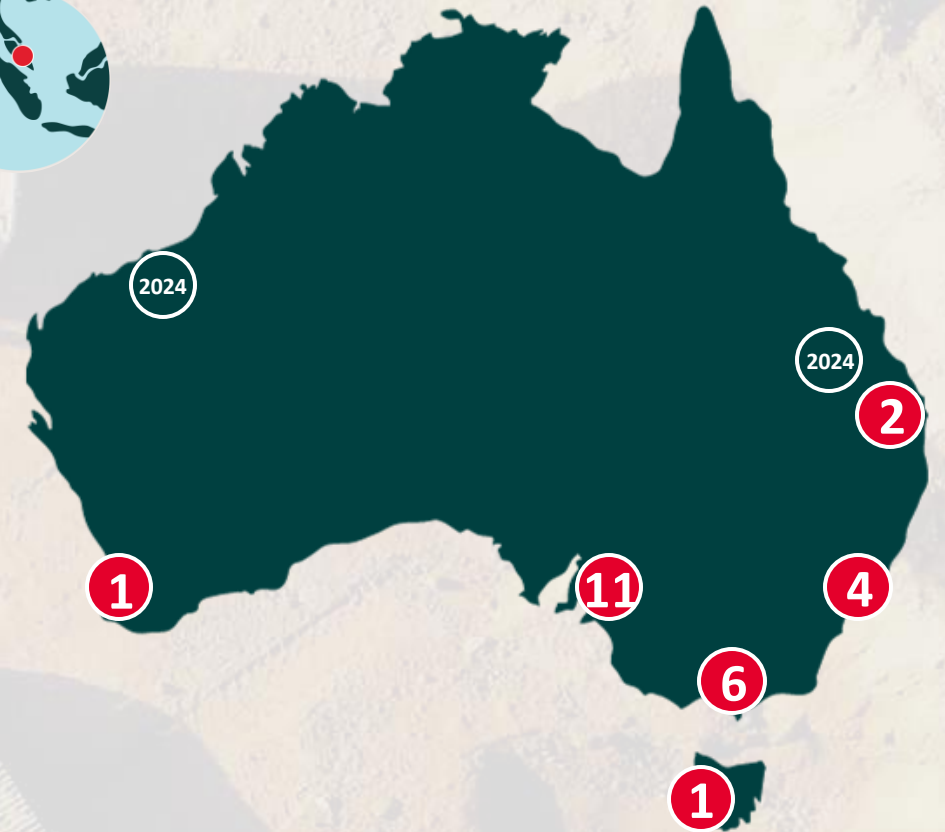
317,000 tonnes of carbon abatement



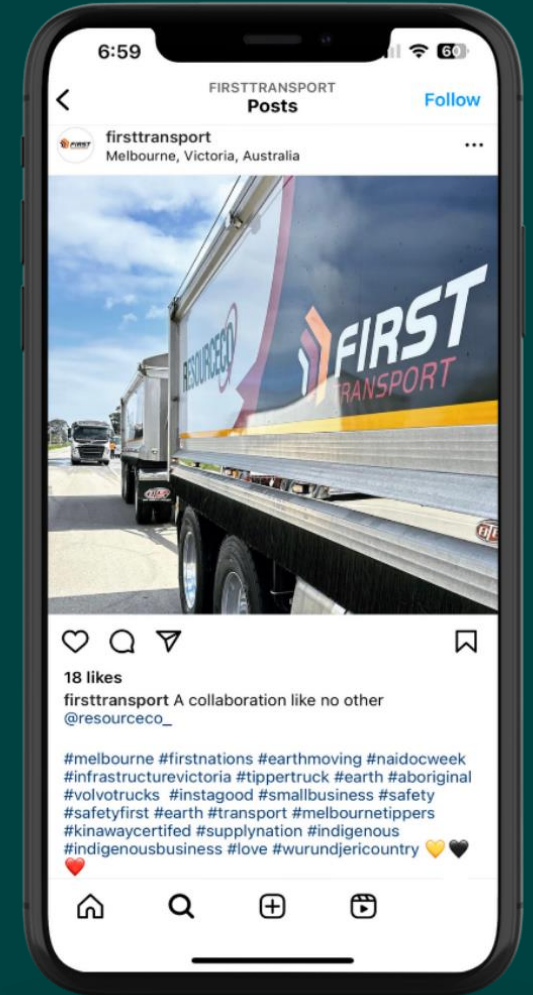
Group-wide recycling rate



Workers across all sites Australia/Asia



INDIGENOUS PARTICIPATION



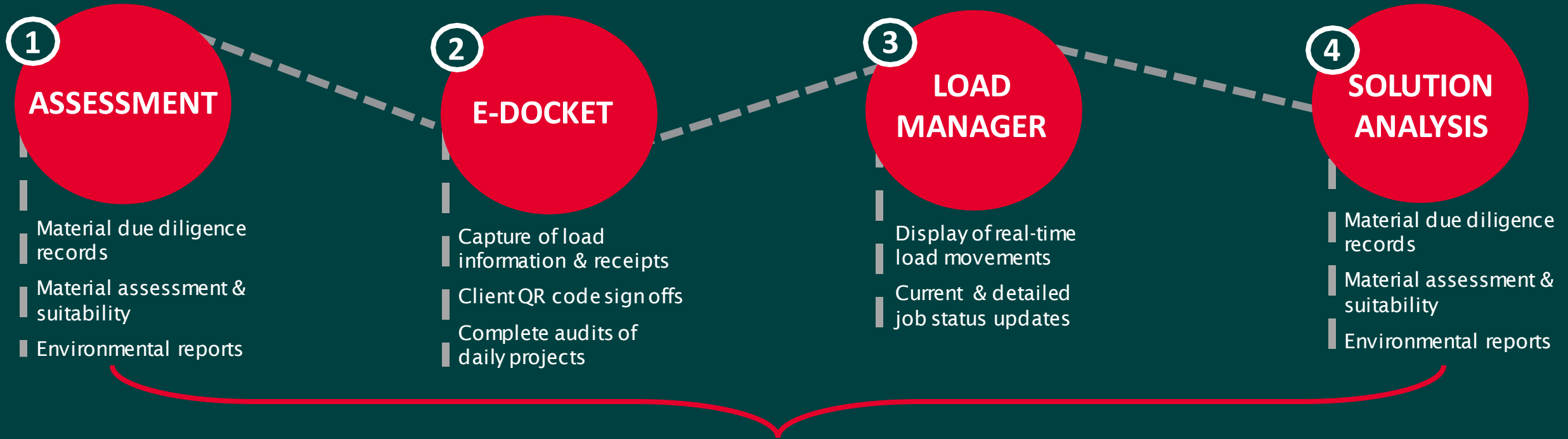
PRACTICAL
PARTNERSHIP



FLEET GROWTH
6-8 TRUCKS 2024



CHAIN OF RESPONSIBILITY – MATEX SYSTEM



Fatigue



Mass



Vehicle standards



Speed

EXPERIENCE

MAJOR INFRASTRUCTURE PROJECTS

CURRENT

SPARK North East Link Project

Period: 2022 to current, scope 12 million tonnes spoil.

WestConnex M6 (Stage1)

Period: 2022 to current. Manage 127 unique trucks across 8,200 bookings, ResourceCo has exported 800,000 tonnes of material.

SPFJV Maribyrnong Main Sewer Augmentation

Period: 2022 to current, supply 30,000 tonnes of Classed Crushed Rock Products. Export 30,000 tonnes spoil.

Fleurieu Connections Main South Rd Duplication (Stage 1)

Period: 2023 to current, 320,000 tonnes of material exported.

**10+ MAJOR
PROJECTS
UPCOMING IN
NEAR FUTURE**

**WORKED ON
MANY OF THE
COUNTRIES MOST
SIGNIFICANT
INFRASTRUCTURE
PROJECTS**

GENERAL CIVIL PROJECTS

LANDSCAPING

LAND IMPROVEMENT AND REHABILITATION

ResourceCo

The logo for ResourceCo features the word "ResourceCo" in a bold, white, sans-serif font. The letters "Co" are significantly larger than the preceding "Resource". To the right of the "Co", there are two red circular arrows. One arrow starts at the top of the "o" and curves clockwise around it. The second arrow starts at the bottom of the "o" and curves clockwise around it, creating a circular path that suggests a cycle or a continuous process.



Q&A



Holcim

Evan Smith, National Sustainability Manager –
Sustainable Construction





Holcim - Decarbonizing construction

Building progress for people and the planet



Speaker



Evan Smith

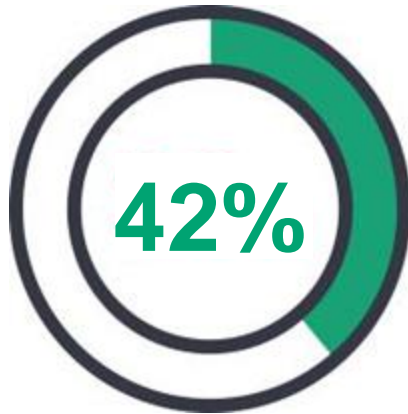
Holcim (Australia) - National Sustainability Manager for Sustainable Construction

Evan Smith brings over 21 years of environmental and sustainability experience across the rail, road, infrastructure, construction, and resources sectors. He holds a Bachelor of Environmental Engineering and is recognized as a Chartered Engineer, Green Star Accredited Professional, and Infrastructure Sustainability Accredited Professional.

Additionally, Evan is actively involved as the chair of the Material Embodied Carbon Leaders Alliance working group for concrete and cement, where he leads efforts to address embodied carbon in construction materials and drive industry-wide sustainability initiatives.

Evan played a pivotal role in several ground breaking initiatives, including the delivery of Australia's first Environmental Product Declarations (EPDs) for Ready-mix Concrete, the first Process EPD Certification, and the first Climate Active certification for ready-mix concrete.

Infrastructure & building materials contribute significantly to emissions



Currently, infrastructure and buildings account for 42% of global CO2 emissions

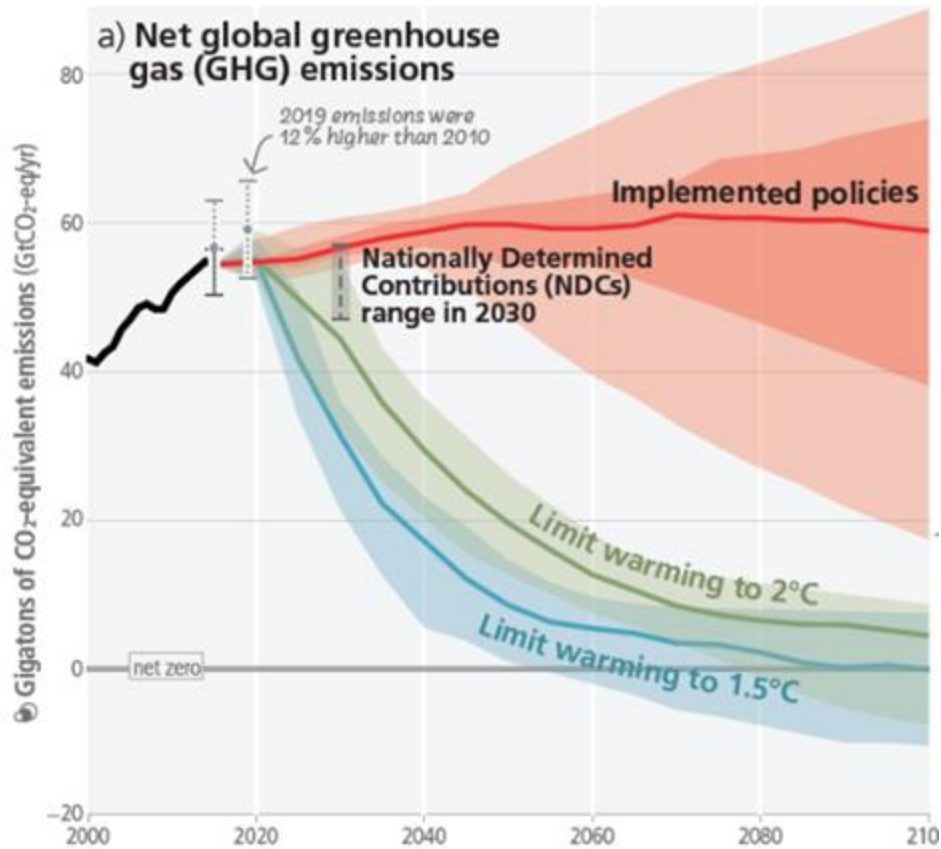


Currently, construction material account for 15% of global CO2 emissions



Low-carbon construction material =
A key variable in the decarbonisation of the property and infrastructure sectors in Australia

The **global construction sector** has a clear mandate



By 2030, the embodied carbon of all building and infrastructure construction materials need to be **at least 40% lower**.

By 2050, all new buildings and infrastructure materials need to **'Carbon Neutral'** without the use of offsets.

ADVANCING NET
ZERO

Low carbon concrete
made easy.

ECO Pact

Reduced embodied carbon by 30-60%

The features of **ECOPact**.



Reduced embodied carbon by 30-60%



Data backed by EPD



Option for carbon offsets



Gain competitive advantage



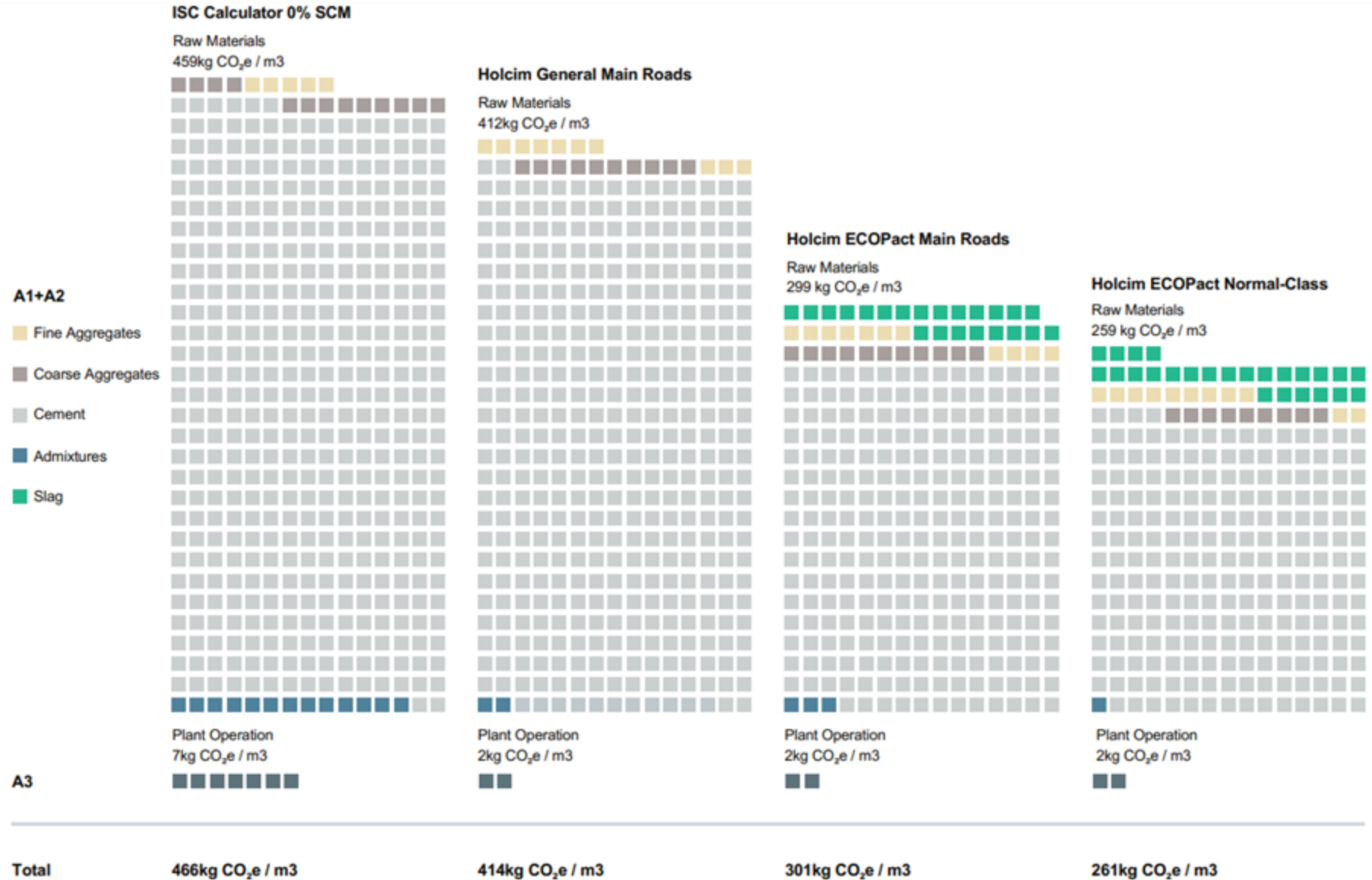
Align with global direction and momentum



The easy choice for all applications

The embodied carbon **impact** of concrete

Benchmarking Example:
40 MPa Concrete (Western Australia)



ISC IS benefits



Holcim's ECOPact may allow Holcim's customers to gain additional points in the ISCA IS rating Scheme, including:

- Rso-6 Material Life Cycle Impact Measurement and Management
- Rso-7 Sustainability Labelled Products and Supply Chains
- Inn-1: Improving on credit benchmarks
- Innovation Challenges

ECOPact with carbon offset service option may allow for additional IS rating benefits

THANK YOU

ECOPact Brochure Download



Evan Smith

National Sustainability Manager -
Sustainable Construction

evan.smith@holcim.com





Cacti Conserve

Jackson Ellis, Director





Cacti Conserve is a Victorian **social enterprise** manufacturing and supplying **Eco Site Safety Products** to projects and workplaces across Australia. Our products are certified **Australian Made** from **recycled materials**, and are designed to help organisations reduce their waste footprint. Our local manufacturing processes engage women and men from non-English speaking backgrounds, and we donate 50% of profits to Australian conservation projects.

Our mission is to help organisations of all shapes and sizes reduce their waste footprint through better selection of consumables.



Eco Barricade Tapes



Recycled Silt Socks



Eco Flagging Tape



Eco Heavy Duty Carry Bags



Eco Safety Posts



Eco Traffic Flags



Eco Safety Bunting



Eco Safety Bunting is designed and manufactured in Melbourne, made from **100% Recycled materials**. Replacing conventional bunting made with PVC coated fabrics which cannot be recycled locally.

End-of-life recycling options cover this entire product through our Responsible Disposal Scheme.

Available in Industry Standard colours, and choice of 8m, 30m or custom lengths up to 500m. for optimal utility on site. With options for custom printing of your project / company message on the flags.



Sustainable Safety in action;



40 x = 1kg

rPET Rope from 100% recycled ocean harvested plastics, this Rope is recyclable through textile recycling facilities.

100% Recycled Polyester Flags from 100% post consumer recycled plastic bottles, conditioned with environmentally friendly colour fast and water resistant compounds for enhanced outdoor performance and UV resistance. PVC and fluorocarbon free – making this fabric recyclable.



Each kilogram of Eco Safety Bunting uses approx. 40 recycled plastic bottles.

Sustainability Benefits

Eco Safety Bunting

- Replaces conventional virgin plastic bunting with a 100% recycled product made.
- Harnesses post-consumer plastics in recycled polyester flags, and ocean-bound plastic waste in rPET rope.
- Is PVC free and so can be recycled via local textile recycling streams, available via our Responsible Disposal System.
- Available in custom printing to reduce the temporary signage around site or exclusion zones.
- Supplied in plastic free packaging.

Each 30m reel of Eco Safety Bunting;

Consumes:	0.41kg of recycled plastic (mix of post-consumer and ocean bound)
Eliminates:	0.41kg of imported unrecyclable PVC coated textiles and plastic going to landfill
Employs:	1.8hrs of Social Enterprise labour
Supports:	Training and Employment via partnering Social Enterprise Assembled Threads
Creates:	\$2.37of contribution to Australian Conservation projects

ISC Applicable Credits:

IS v1.2: Inn-1, Mat-1, Was-2

IS v2.1: Inn-1, Rso-4, Rso-6

Rso-4 Resource Recovery and Management

Eco Safety Bunting is 100% recyclable and has been designed and produced to eliminate the need for safety bunting products from ever ending up from landfill, this mission is supported by the accompanying Responsible Disposal Scheme directions received at time of purchase. Eco Safety Bunting replaces conventional bunting which cannot be recycled and is destined to end up in landfill.



Victorian Regional Rail Upgrades

VICTORIA'S BIG BUILD



During 2023 and 2024 Cacti Conserve has been supplying Eco Safety Bunting to two the Regional Rail Revival projects as part of Victoria's Big Build. Acciona Rail selected the waste negative bunting over conventional bunting for the environmental protection zones across the long linear project. Working with their enviro teams we developed a custom style bunting which displayed the program / project name, exclusion zone purpose and messaging.

Providing these projects:

- Over **18.6km** of Eco Safety Bunting
- A reduction of **250kg** of unrecyclable imported plastic
- A social Impact of over **1100 hours** of S.E. employment
- A custom printed product meaning an enviro. cadet did not need to spend hours printing, laminating and stapling exclusion zone messaging to the site bunting.





www.cacticonserve.com.au

Factory 13 / 69 Acacia Rd, Ferntree Gully VIC

Jackson@cacticonserve.com.au

0406 089 248

Proudly a member of:



Thank you for supporting our social enterprise

Cacti Conserve donates 50% of profits to local, Victorian and national Conservation Projects.



A Healthier Planet through Innovation and Conservation.



JWA Composite Matting

Windsor Fick, Operations Manager





WINDSOR FICK
Operations Manager



Who is JWA?

We are a small business of around 15 people who specialise in the supply of composite matting products.

We have been supplying matting products to major projects across almost every sector for over 20 years.

We are primarily a dry hire business, but do also do sales if required. Our main 2 flagship products

are:

- The surface mounted **FODS Rumble Mat** for site exit sediment control.
- The heavy duty, interlocking **Dura-Base** composite mats for temporary road and pads



READY TO RUMBLE?





FODS RUMBLE MATS

Length : 3.65m Width : 2.13m

Height : 9.5cm Weight : 191kg

Pyramid height: 7.3cm

- Reusable
- 100 % Recyclable HDPE
- 10%+ of recycled materials
- Surface mounted
- Easy maintenance

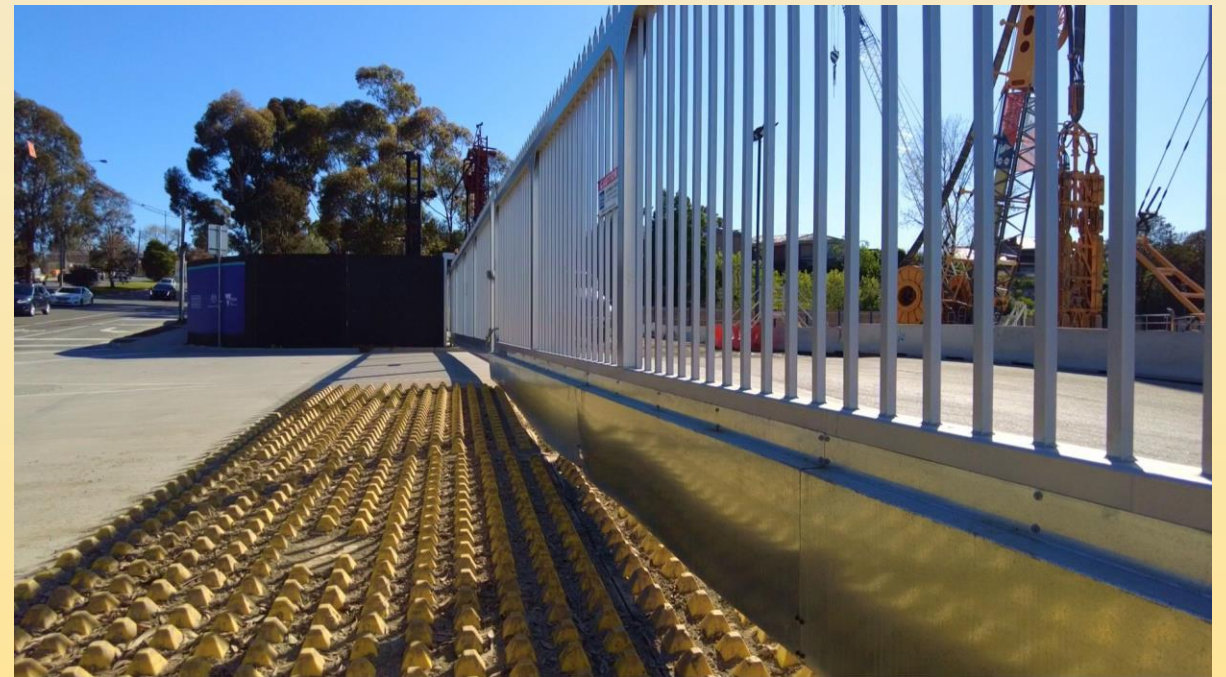
Works by shaking the vehicle like tradition rumble grids but also by tyre manipulation to dislodge debris.

(IS v1.2 Dis-4, Mat-1, Was-1, Was-2)



RIA Case Study

- First site to deploy FODS in Australia
- Site did not allow to dig a pit for the traditional rumble grid
- Street sweeper runs were reduced by approximately 40% compared to previous methods
- Received Innovation First in August 2023





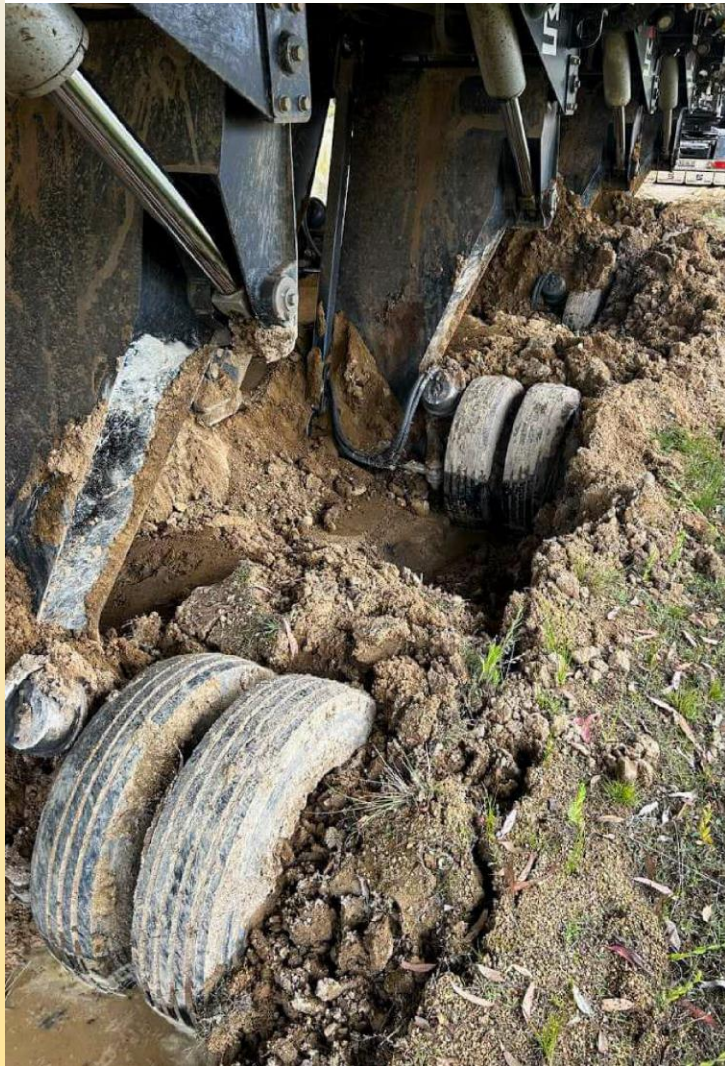
Mackay and Sons House Removals and Demolition

20 November 2022 · 🌐



Looks Can Be Deceiving 🙄

While the topsoil may appear dry, the sublevel was still holding a lot of water. The weight of a Mack Truck, a House Relocation Trailer and an entire house meant that bog mats were crucial for this relocation.



Dura-Base® Composite Mat

Length : 4.2m

Width : 2.4m

Height : 10.5cm

Weight : 454 kg

Load Capacity : 100+ tonnes

An interlocking versatile mat.

- Reusable
- Available for both rent and purchase
- 100 % Recyclable HDPE
- 20+ years life span if cared for properly
- "Gets you out of trouble"

(IS v1.2 Dis-4 , Mat-1, Was-1, Was-2)

Dulacca Wind Farm Case Study

The project required access and working platforms in sensitive agricultural land.

Resource Conservation:

- Savings of approximately \$550,000 in quarried material costs.
- Elimination of 60% of the estimated costs associated with rock access.
- Installation and removal of the roadway using mats took only 15 days, whereas traditional rock access would have taken 50 days.





Soil Conservation:

- Mats helped avoid the need for mechanical removal of imported materials, reinstating removed soil, and achieving compaction levels suitable for safe agricultural machinery traffic.
- Eliminated the risk of cross-contamination to the sensitive agricultural land.

Thank You!

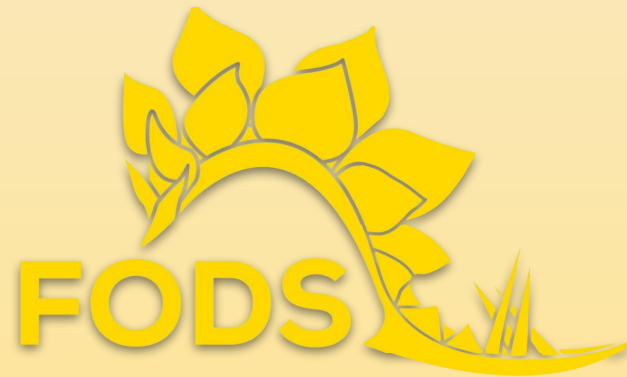
Contact information:

www.jwaoil.com;

www.fods.com.au;

1800 264 628;

windsor.f@jwaoil.com





Q&A

Contact Details

Makinex Renewables
Craig Skipsey

c.skipsey@makinex.com.au
+61 481 217 521

InEight
Nicolas Morel

nicolas.morel@ineight.com
+61 455 318 821

ResourceCo
Steph Holland

steph.holland@resourceco.com.au
+61 459 942 497



Holcim
Evan Smith

evan.smith@holcim.com
+61 429 790 950

Cacti Conserve
Jackson Ellis

jackson@cacticonserve.com.au
+61 406 089 248

JWA Composite Matting
Windsor Fick

windsor.f@jwaoil.com
+61 423 100 523





Thank You