



||

# Suppliers in the Spotlight

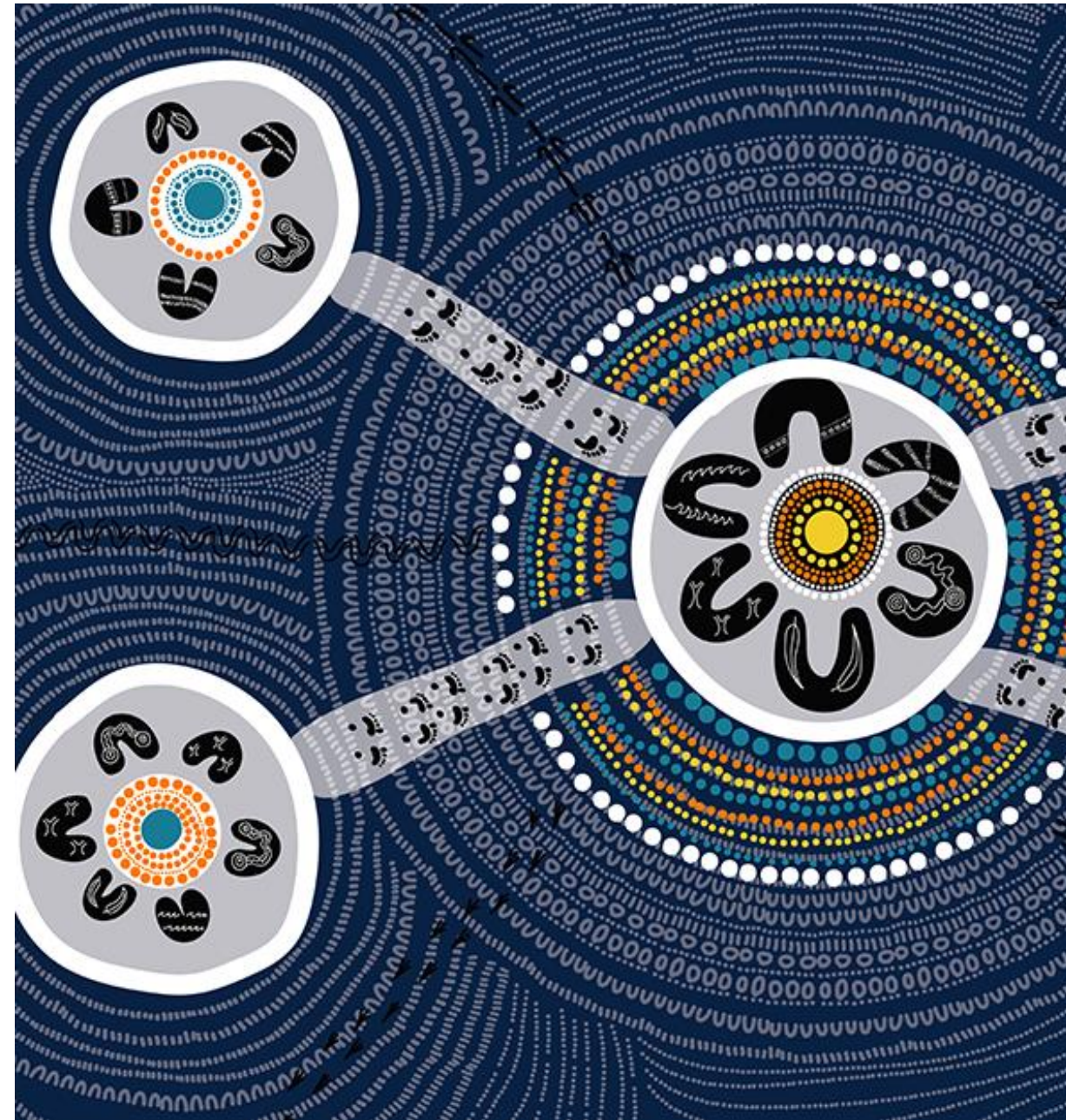
24 July 2025

# Acknowledgement of Country

Tēnā koutou, tēnā koutou, tēnā koutou  
katoa

The ISC would like to begin by  
acknowledging the Traditional Custodians  
of the land on which we meet today.

We acknowledge their deep connection to  
land, water and culture, and pay respects  
to Elders past, present and future.



# Agenda

1

Ben Redwood



2

Tom Rimmington



3

Maretha Smit



4

Paul Curtis



5

Israel MacDonald



6

Tony Costa







**Mutu**

Ben Redwood, CEO







## Discover

Search 20 listings

Listing type: All

Location: All

Sort by Date desc.



MAIN OFFICE

Plywood sheets

CLAIM NOW



CARBON

500 x 3000 Culvert

CLAIM NOW



MAIN OFFICE

Reinforcing Mesh

CLAIM NOW



OPS BUILDING CAR PARK

3m Sheet piles



C & L

Septic tank



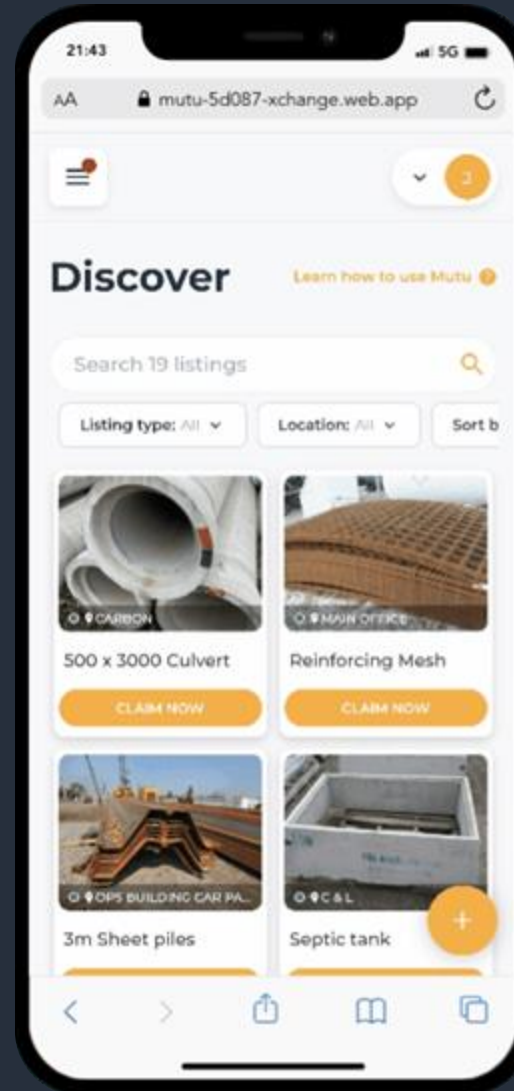
CCG

1 pallet of paving

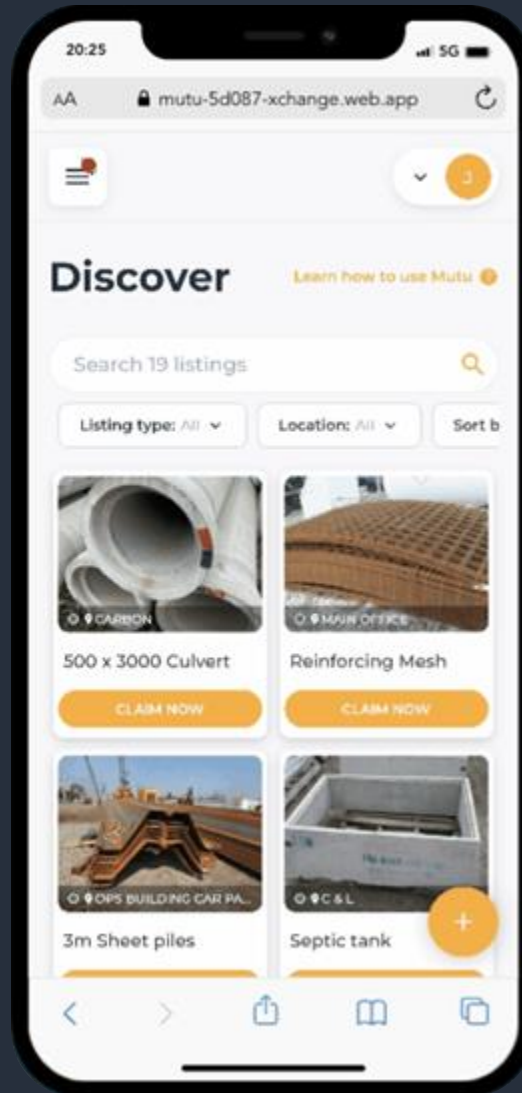
“Our yard is full of  
valuable materials, but no  
one in our company  
knows what’s there...”



# REVEAL - Add materials in less than 30 seconds



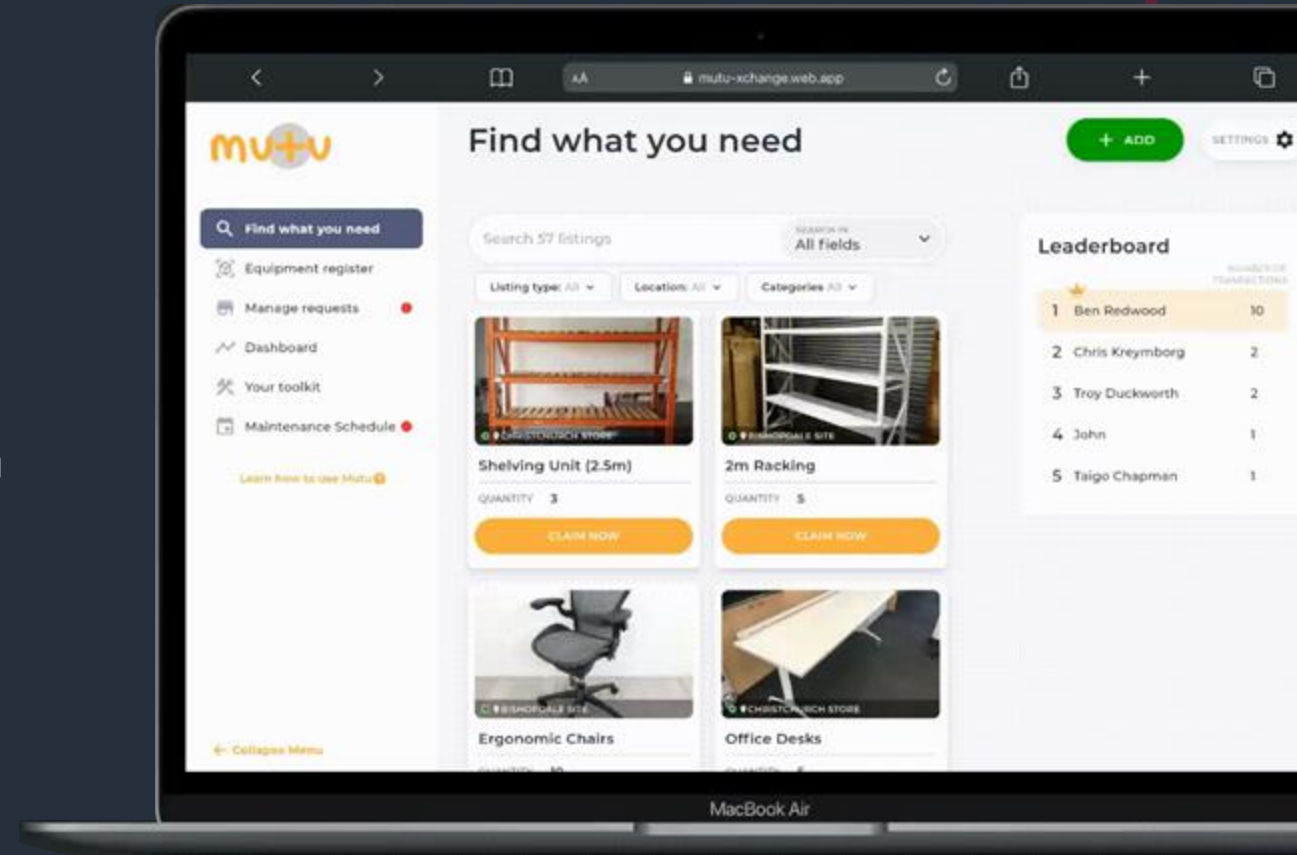
# REUSE - Find and claim materials from anywhere





# REPORT - Real-time data

- Create [custom reports](#) to contribute towards climate plans
- Report on
  - procurement costs saved
  - weight & CO2-e redirected from landfill
  - listings/transactions over time
  - waste stream material types



# Leading contractors including:



# To date Mutu has:

- Repurposed more than **2000 tonnes of surplus materials** back into other projects
- Saved our customers more than **\$2M in procurement costs** & **\$500k in disposal costs**
- Redirected more than **300 tonnes of CO2 waste emissions** from landfill







[mutu.co.nz](https://mutu.co.nz)



# Vital Chemical

Tom Rimmington, Commercial Growth Support











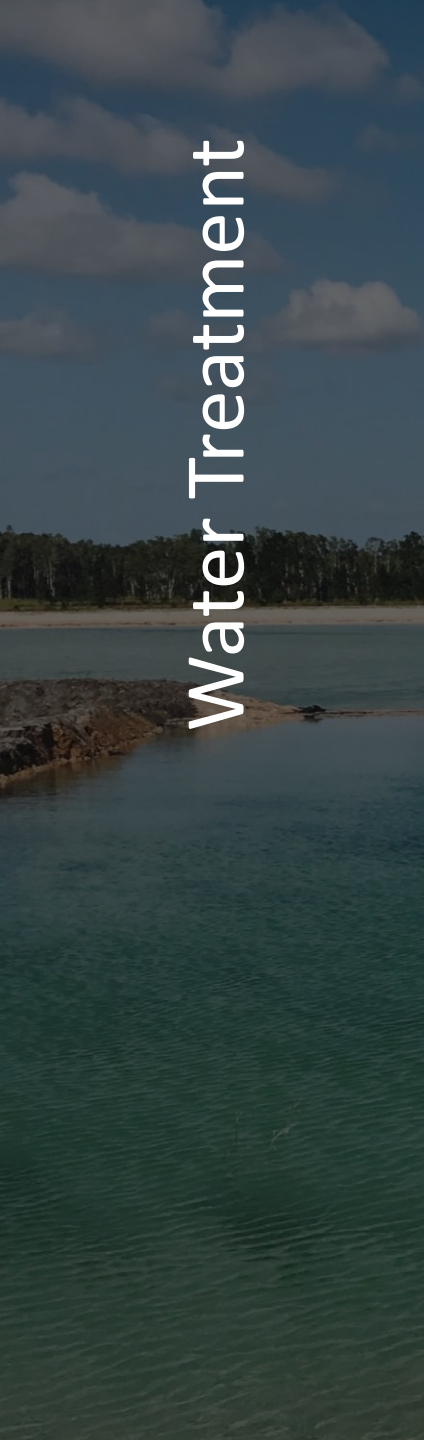
Erosion Control



Dust Suppression




Revegetation



Water Treatment



Concrete Removal

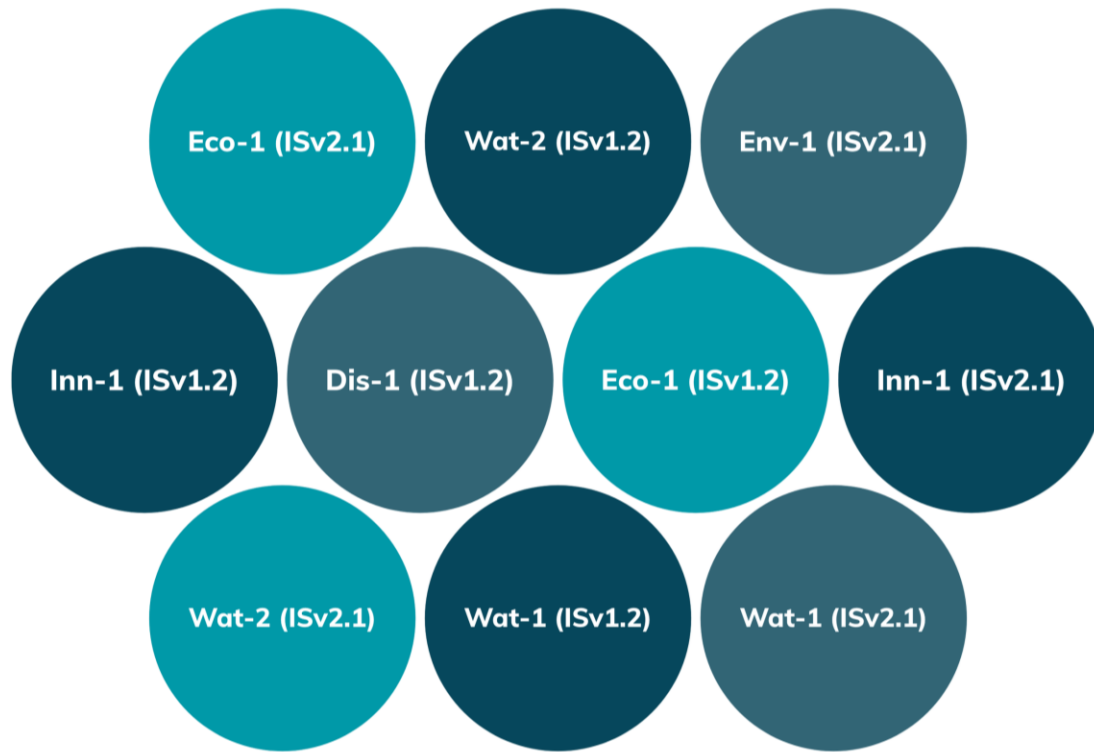


Heat Exchange  
Corrosion Inhibitors



# Vital Super Clear Extra

## ISupply Applicable Credits



# Vital Super Clear Extra – Australian First Innovation

Application Site: Western Sydney International Airport







Infrastructure  
Sustainability  
Council

MEMBER



ISupply

MEMBER



Vital Bon-Matt  
P47-VR1



Vital Eco Super Floc



VE Gro-Matt Hydromulch



Vital Biochar



Vital Bon-Matt Stonewall



Vital Super Clear



VE Gro-Matt  
Straw Fibre



VE Organic-Matt



Vital Bon-Matt HR



Vital Super Clear Extra



VE Char-Matt



Vital Flo-Chem Thick with  
Rust Guard





---

vitalindustries.co.nz

**Tom Rimmington**

✉ [enquiries@vitalindustries.co.nz](mailto:enquiries@vitalindustries.co.nz)

☎ +64 800 451 516





# Te Uru Tāngata Centre for Workplace Inclusion

Maretha Smit, Chief Executive Officer







**Shaping fair and connected workplaces**



# Our services

Membership model

Training and consulting services

Practitioner accreditation



# Sustainability alignment

Social sustainability and stakeholder cohesion

Talent retention, engagement and innovation

ESG and corporate performance





# Practical take-away

Workplaces are now among the few remaining spaces where **social cohesion can be actively nurtured**

Te Uru Tāngata aims to support its members to lead that work with clarity, courage, and cultural responsiveness.





✉ [info@workplaceinclusion.org.nz](mailto:info@workplaceinclusion.org.nz)

☎ 0800 348 377

💻 [www.workplaceinclusion.org.nz](http://www.workplaceinclusion.org.nz)



||



Q&A



# SiteHive

Paul Curtis, Business Development Manager - NZ



**SiteHive**




# Environmental monitoring and management for today's world




Next-generation devices

# SiteHive Hexanodes



 Noise+Dust




 Noise



 Dust

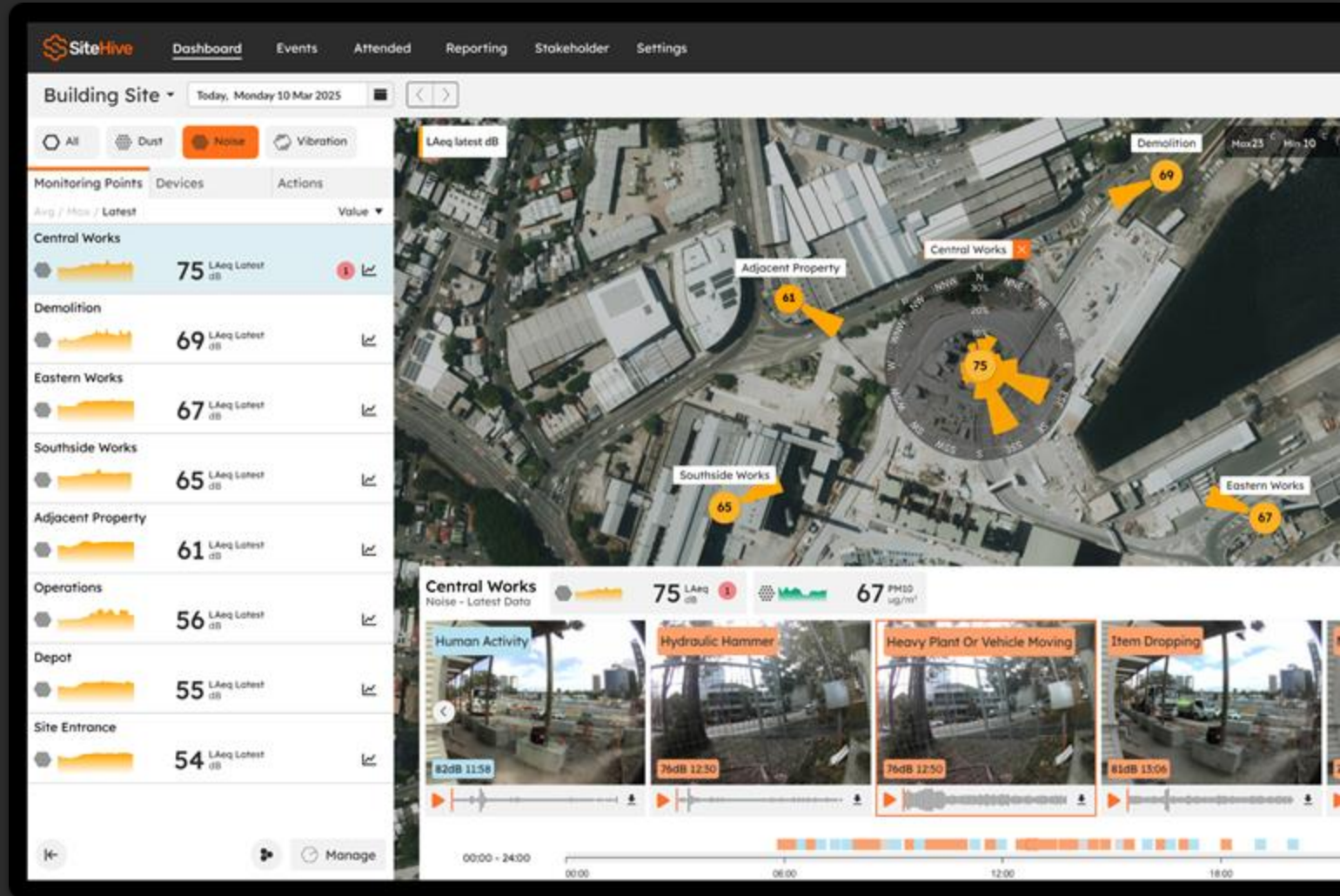


 Vibration



Software

# SiteHive Enviro and Enviro Pro



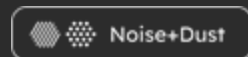
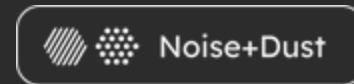
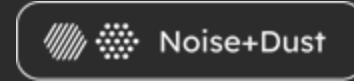
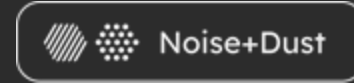
## Relevance to ISC Rating

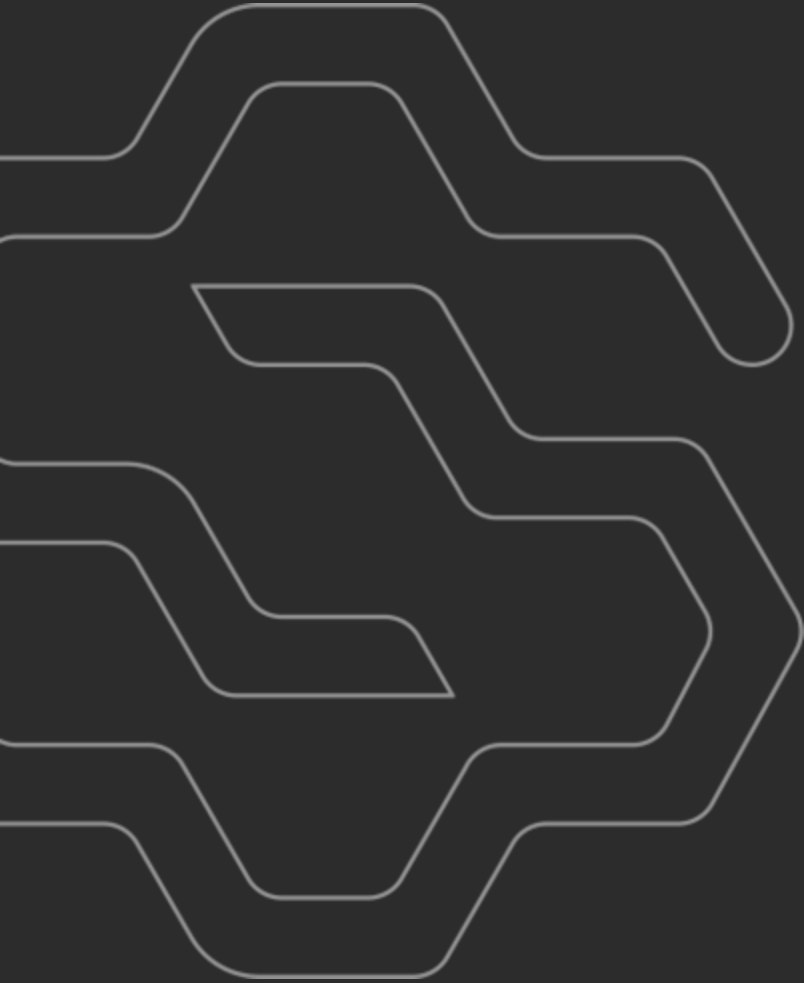
- Implement and monitor mitigation measures across noise, dust & vibration.
- Implement real-time monitoring and public reporting.
- Prove there are no major exceedances of noise, dust & vibration goals.
- Regularly engage with stakeholders and consider their feedback.



## Examples of New Zealand Projects

- Auckland City Hospital
- Middlemore Hospital
- WaterCare Tunneling
- Tauriko Enabling Works
- Eastland Port





# Thank you!

Paul Curtis  
BDM New Zealand Aotearoa  
e: [paul@sitehive.co](mailto:paul@sitehive.co)  
m: 021 2468 498



# Pacific Steel

Israel MacDonald, Sustainability & Market Development Manager







# Electrifying Local Steelmaking

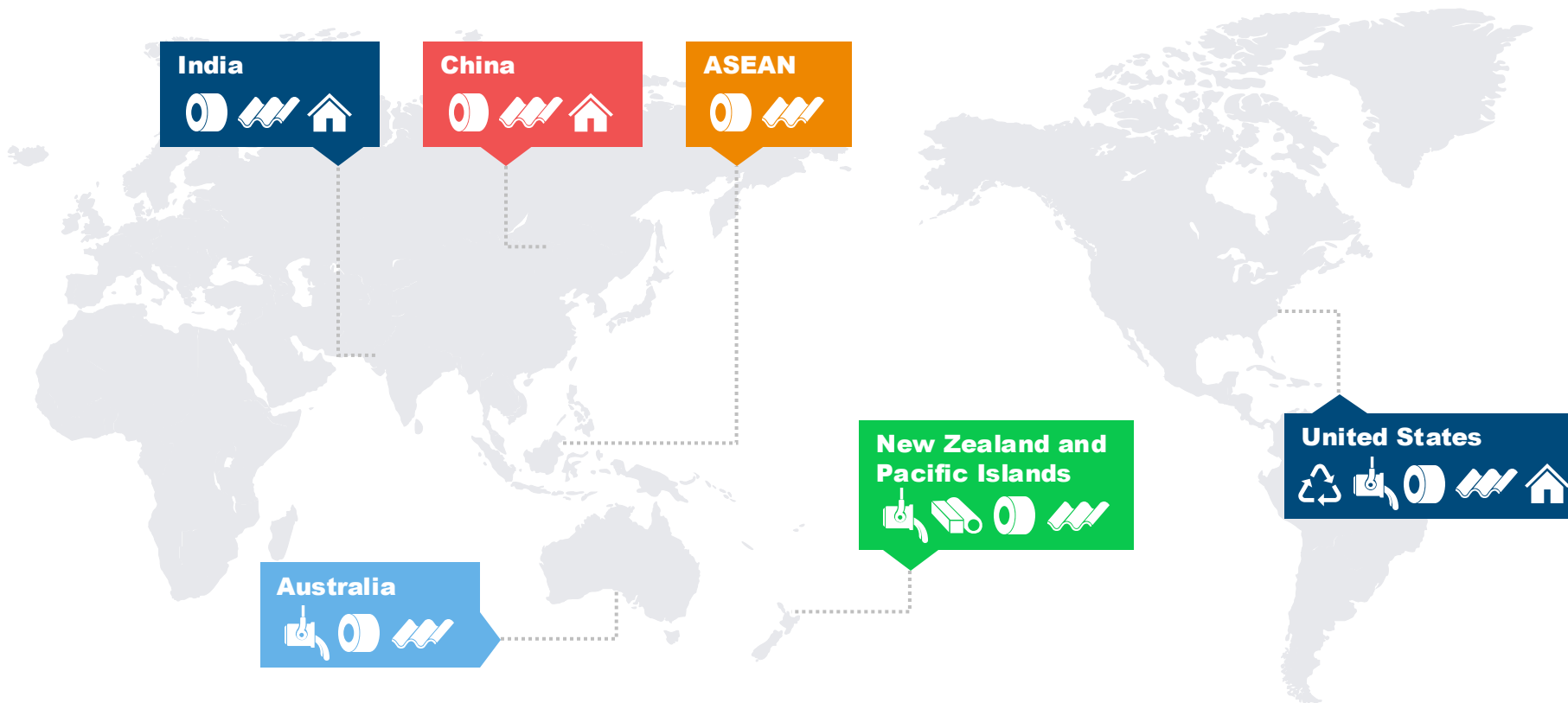
July 2025

**Israel MacDonald**

Sustainability & Market Development Manager

Pacific Steel is a wholly owned subsidiary of BlueScope Steel Limited.





- A diverse portfolio of businesses
- A leader in metal coating and painting for building and construction
- Iconic industrial brand position of COLORSTEEL® steel & PACIFIC STEEL®
- North Star, one of the most productive and profitable mini-mills in the US
- Footprint across high growth Asian markets

## Key



Recycling  
(scrap metal)



Steelmaking  
(flat products)



Metal coating  
and painting



Long products  
(rebar, wire)



Steel buildings  
and systems



Steel building materials and  
components

### Reinforcing Steel In Bar & Coil form

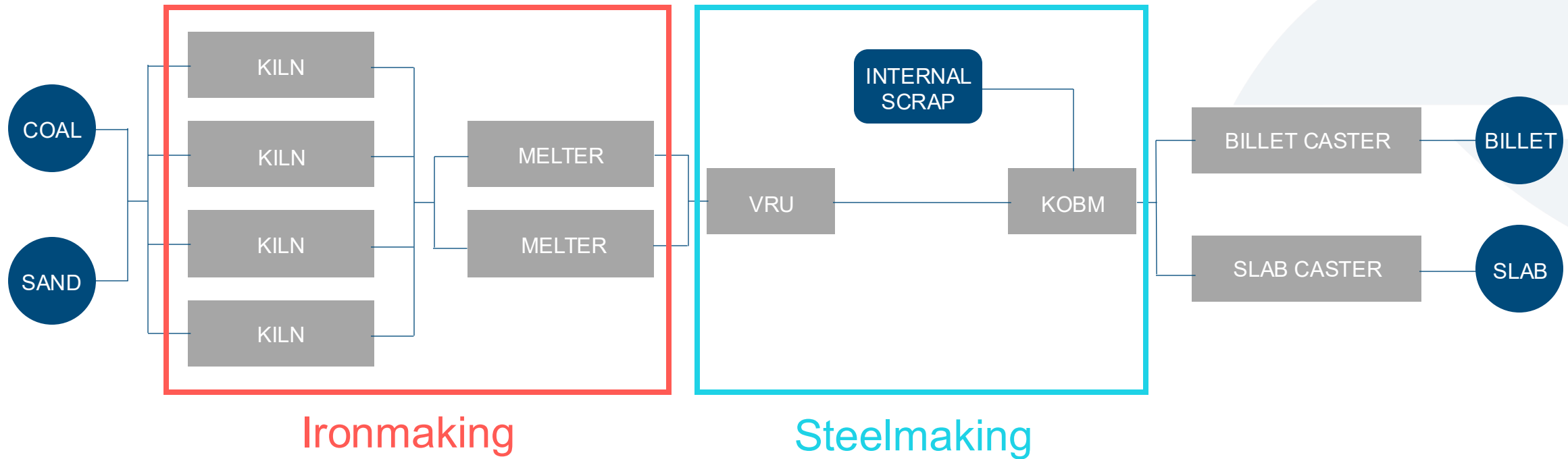


### Steel for Mesh Ductile Structural Mesh Grades

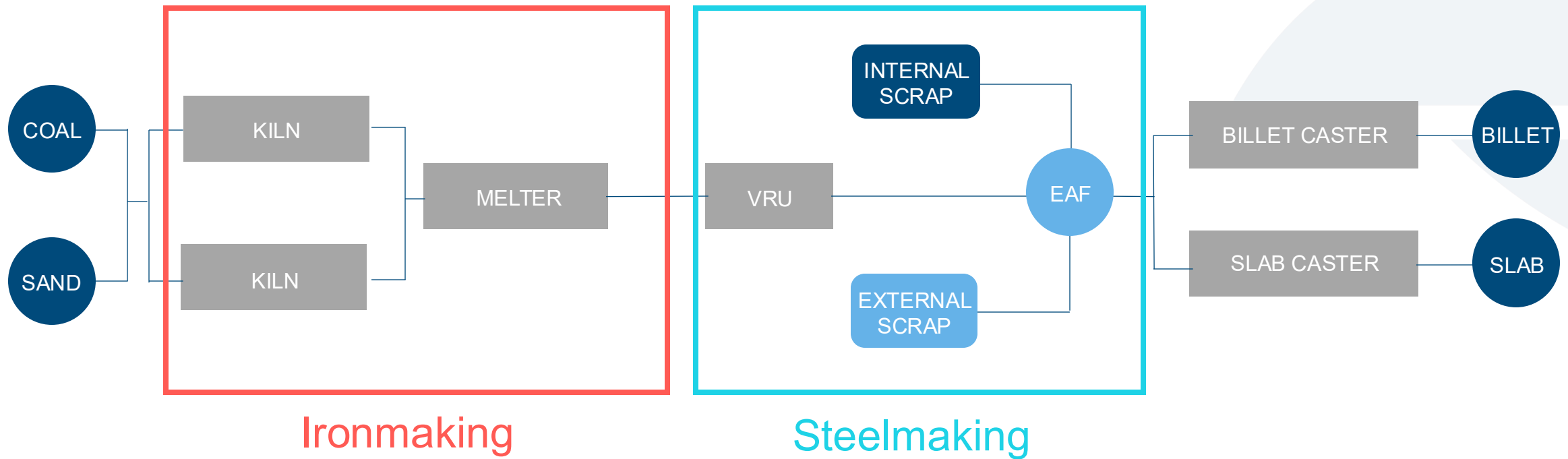




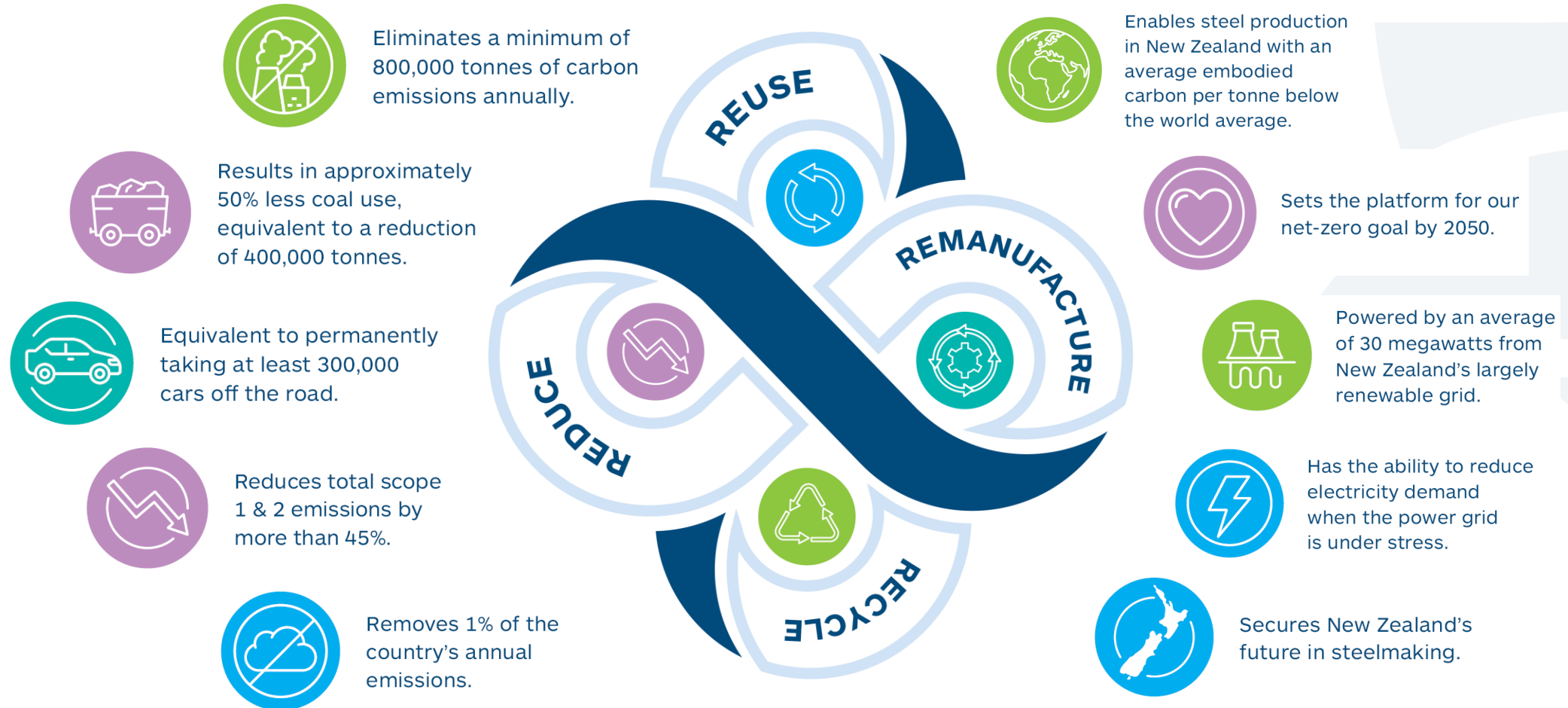
## The Original Process at New Zealand Steel



## The Electric Arc Furnace Process at New Zealand Steel



## A New Process is Born







**45/55 Ironsand/  
Scrap Blend**  
1.89 GWP



**100% Scrap  
Blend**  
0.485 GWP

Modelling projected impact on an 'average' build based on estimate EPD values\*



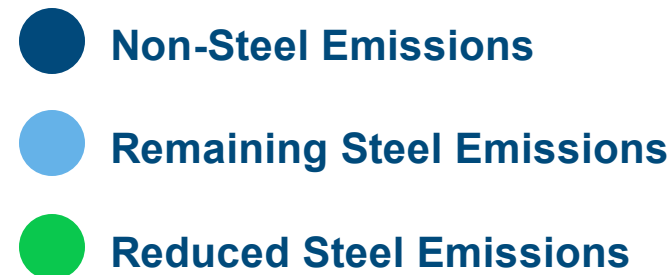
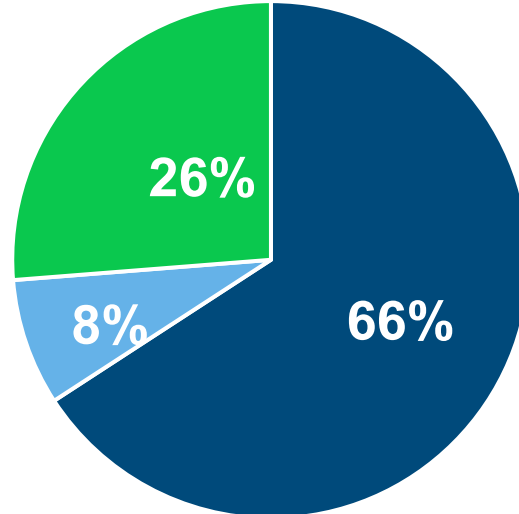
## Non-Residential

- Mix of two categories;
- Multi-story building (47)
- Warehouse-type \*53)



## Building Embodied Carbon Reductions\*

- Steel impact **-77%\***
- Overall impact **-26%\***



\*based on unverified EPD values and modelled buildings from  
<https://www.thinkstep-anz.com/assets/Whitepapers-Reports/Low-Carbon-Circular-Economy-White-Paper-v1.0.pdf>

All New Zealand Steel, Pacific Steel & Steltech® products will be made via EAF in early 2026





For More Information visit [www.pacificsteel.co.nz/sustainability](http://www.pacificsteel.co.nz/sustainability)



## Contact Details

**Israel MacDonald**

Sustainability & Market Development Mgr

[Israel.macdonald@bluescopesteel.com](mailto:Israel.macdonald@bluescopesteel.com)

+64 21 944 657

**Greg Jones**

Business Development Manager

[Greg.Jones2@bluescopesteel.com](mailto:Greg.Jones2@bluescopesteel.com)

+64 21 241 9447





# SCAADA Environmental and Sustainability

Tony Costa, Chief Executive Officer





# scaada

Environmental &  
Sustainability



Tony Costa  
Chief Executive Officer



# Scaada Environmental & Sustainability



**At Scaada, we aspire to be more than just a company; we are a movement beyond profitability, serving as a blueprint for a sustainable and harmonious future.**

**Empowering clients,  
solving challenges.**

Scaada Environmental and Sustainability provides expert consulting services to help clients navigate environmental regulations, assess impacts, maintain compliance, and develop tailored sustainable practices.

We believe in a future where businesses seamlessly balance profit and purpose, making a significant impact on the global landscape. Guided by our core values— Growth, Integrity, Innovation, Community, and Sustainability.

# Empowering clients, solving challenges.

## Mission

At Scaada, we're on a mission to champion Environmental Sustainability. Through innovation and mindful stewardship, we strive to leave a positive legacy for our people, planet, and community.

## Vision

Scaada envisions being a national leader in environmental sustainability, fostering a world where businesses prioritise both profit and purpose. The goal is to inspire environmental responsibility and cultivate a supportive workplace that encourages meaningful contributions.

# Values



## Growth

Commitment to continuous improvement and expansion, both as a company and for our employees.



## Innovation

Encouraging creativity and forward-thinking to drive sustainable solutions and practices.



## Integrity

Upholding honesty, transparency, and ethical practices in all aspects of business.



## Community

Building strong relationships within community, fostering collaboration and support.



## Sustainability

Prioritising environmentally sustainable practices in all aspects of our operations.



# Environmental

**Delivering strategic, best-practice environmental consulting services to ensure our clients achieve their desired project outcomes.**

We specialise in providing comprehensive environmental services to a diverse range of clients, including business, government and not-for-profit.

Our expert environmental consultants leverage their extensive experience across multiple sectors to guide clients through complex environmental challenges, safeguarding both project success and the protection of corporate reputations.

## Services

Our environmental services focus on:



**Land**



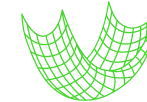
**Air**



**Water**



**Waste & Compliance**



**Erosion & Sediment Controls**

We are experts in soil management techniques, water management and re-use systems, site remediations, site contamination controls, and legislative compliance.

# Occupational Hygiene

**Offering specialised occupational hygiene services designed to protect your workplace, staff and the broader community from potential hazards.**

We specialise in managing risks related to asbestos, mould and microbials, particulates (dust, lead, etc.), silica, air quality (indoor and outdoor), and personal health monitoring, across a broad range of industry sectors and working environments.

Our approach involves identifying hazards, developing risk mitigation strategies, and implementing effective controls.

## Services

Our occupational hygiene team offer expertise in monitoring and consulting related to:



**Asbestos**



**Mould & Microbials**



**Dust, Particulates & Air Quality**



**Noise & Vibration**



**Water Damage**

Continuous monitoring ensures that best practices are maintained and safety measures remain effective over time.

# Sustainability Consultancy

Effectively managing Environmental, Social and Governance (ESG) impacts is crucial in ensuring that we can meet the needs of today without compromising the needs of future generations.

Sustainability is fast becoming a topic of engagement for businesses of all shapes and sizes. ESG issues require knowledge and expertise to mitigate risks and leverage opportunities.

## Services

Scaada offers a range of services to support clients on their ESG journey:



ESG Strategy



Environmental



Social



Governance

By implementing an effective ESG strategy, businesses can realise benefits such as greater opportunities, increased profitability, employee attraction and retention, increased consumer appeal, and effective risk mitigation.





Governance	Environment	Social	Economic
Place	Energy & Carbon	Stakeholder engagement	Options Assessment & Business Case
Leadership & Management	Environmental Impacts	Legacy	Benefits Realisation
Sustainable Procurement	Resource Efficiency	Heritage	
Resilience	Water	Workforce Sustainability	
Innovation	Ecology		



# Scaada Environmental & Sustainability

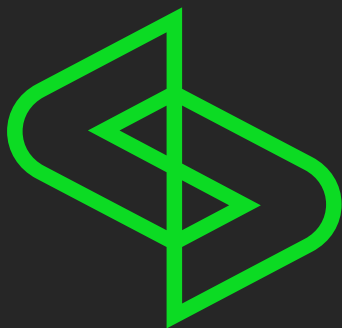


**At Scaada, we aspire to be more than just a company; we are a movement beyond profitability, serving as a blueprint for a sustainable and harmonious future.**

**Empowering clients,  
solving challenges.**

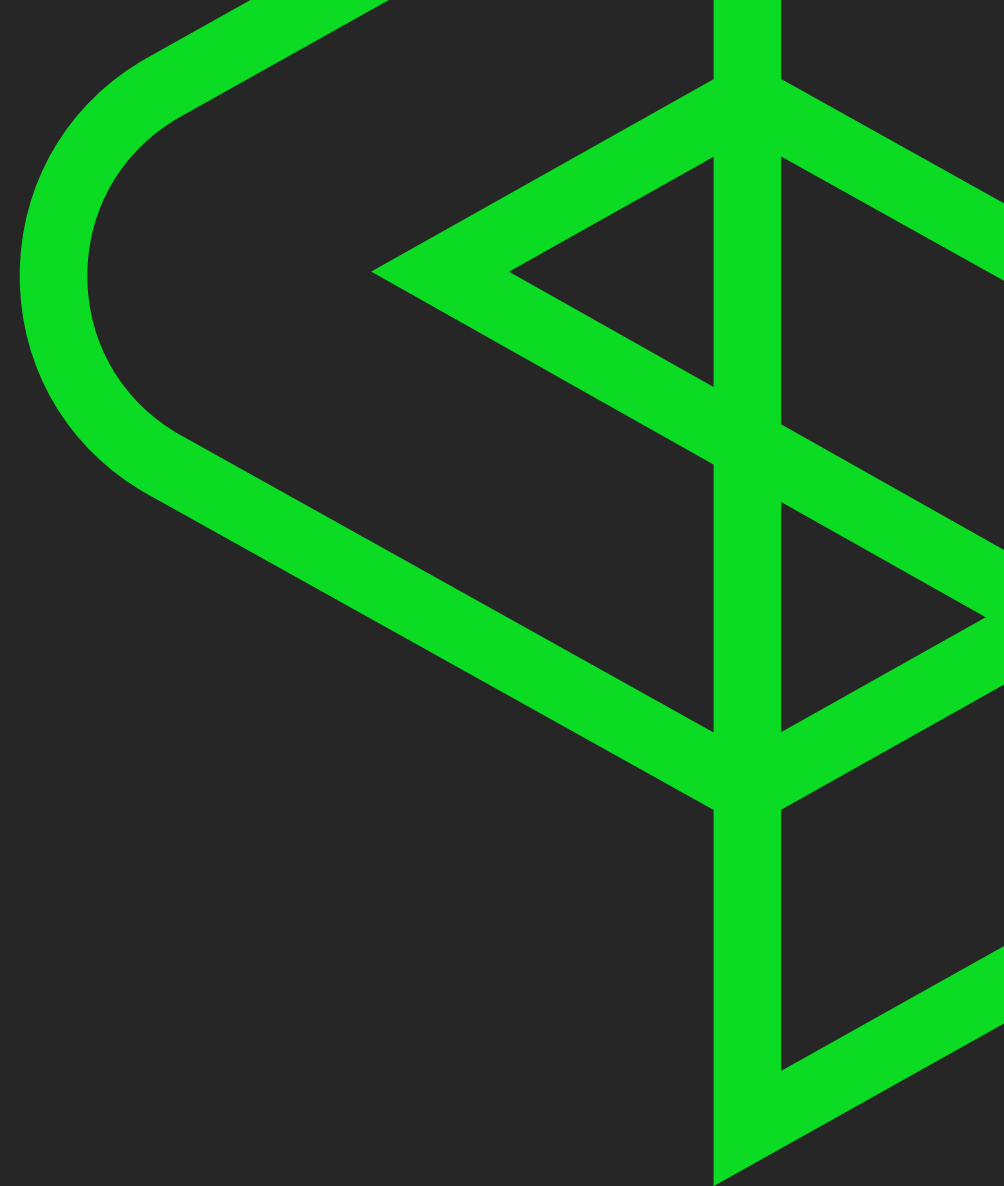
Scaada Environmental and Sustainability provides expert consulting services to help clients navigate environmental regulations, assess impacts, maintain compliance, and develop tailored sustainable practices.

We believe in a future where businesses seamlessly balance profit and purpose, making a significant impact on the global landscape. Guided by our core values— Growth, Integrity, Innovation, Community, and Sustainability.



# scaada

Environmental &  
Sustainability





||



Q&A

||

